

Cambridge Crystal Ball



Published monthly by National Cambridge Collectors, Inc.
to encourage and report the discovery of the elegant and boundless product of the
Cambridge Glass Company of Cambridge, Ohio

Issue No. 359

March, 2003

The Cambridge Colors: Carmen

by Les Hansen

Two colors made by Cambridge were extremely difficult to make because they required reheating of the glass after it was pressed or blown to create the desired color. Those two colors are Rubina and Carmen. The topic of this article is Carmen, a color that Henry Hellmers was very proud to have developed for the Cambridge Glass Company. Carmen was the first ruby glass commercially sold by the company and, according to the Colors in Cambridge book, it was introduced in February 1931.

The glass formula for Carmen is rather simple compared to the formula for many colors, and the formula differed only slightly for pressed and blown ware. Pressed glass items are typically much thicker than blown glass items.

The formulas for all Cambridge colors changed somewhat over time; however, the basic formulas for Carmen (dated 9/1/32) from Henry T. Hellmer's Batch Book of Glass Formulae were:

	Pressed Ware	Blown Ware
Sand	400	400
Soda	170	190
Potash	20	40
Lime	3	3
Borax	8	8
Zinc Oxide	60	60
Cadmium Sulfide	11	10
Selenium	6	6.25

That's right – there is no gold in Carmen. I have heard the rumor that Carmen glass contains gold, and this rumor was probably started because gold indeed can be used as a red colorant for glass. However, as stated in the book, *Modern Glass Practice*, "Needless to say, the cost of gold ruby excludes it from all products except luxury glassware." Cambridge glass was high-quality glassware, but not luxury glassware, at the time it was produced (although a Carmen goblet gold encrusted Rosepoint would certainly be considered luxury glassware today).

Continued on page 4

In this issue:

The Cambridge Baby Bottle

...

News from the Museum

...

2003 Convention Update

...

Meet Jeannie Moore!

...

The Century Club Donors



Carmen Tally-Ho, some with Gold Silk-Screen Decoration

National Cambridge Collectors, Inc.

PO Box 416

Cambridge, OH 43725-0416

Please notify us immediately of any address change.

Contacts:

President Rick Jones	(914) 631-1656
Secretary Ken Filippini	(201) 670-0990
Crystal Ball Editor Alex Citron	(434) 296-2531
NCC Museum (phone)	(740) 432-4245
(fax)	(740) 439-9223

Membership

Membership is available for individuals at \$20.00 per year, and an additional \$3.00 for associate members (12 years of age and older, residing in the same household). Of the \$20.00 dues, \$14.00 is considered the cost of a one-year subscription to The Cambridge Crystal Ball. All members have voting rights, but only one issue of The Crystal Ball will be mailed to each member household.

Multi year memberships are available:
2 years for \$38.00; 3 years for \$56.00.

2002-2003

OFFICERS AND COMMITTEE CHAIRS

President	Richard D. Jones
Vice-President	Tarzan Deel, Jr.
Secretary	Ken Filippini
Treasurer	Dennis Snyder
Sergeant-at-Arms	Charles Upton
Corresponding Secretary	Mark A. Nye
.....	
Acquisitions	Lynn Welker
Archives	Mark A. Nye
Budget & Finance	Mike Strebler
By-Laws	Alex Citron
Endowment	George Stamper
Facilities	Carl Beynon
	Joe Miller
Grants & Fundraising	Sharon Miller
Long Range Planning	Mike Strebler
Member Services	George Stamper
Membership	VACANT
Mentoring Program	Judy Rhodes
	Ken Rhodes
Museum	Cindy Arent
Nominating	Tarzan Deel, Jr.
Program	David Ray
Projects	Bill Hagerty
Publications	Mark A. Nye
Publicity	Lorraine Weinman
Study Group Advisor	Ken Filippini
Technology	Linda Roberts
Webmaster	Linda Roberts
2003 Convention	Shelley Cole Citron
	Georgia Otten
2003 Auction	Dorothy Rieker
	Squeek Rieker
	Lynn Welker
2003 Glass Show & Sale	Mary Beth Hackett
	Joy McFadden
2003 Glass Dash	Larry Everett
	Susan Everett

Board of Directors:

Cindy Arent; Tarzan Deel, Jr.; Larry Everett; Ken Filippini; Rick Jones; Sharon Miller; Dennis Snyder; George Stamper; Mike Strebler; Charles Upton; Lorraine Weinman; Lynn Welker

Cambridge Crystal Ball

The official publication of National Cambridge Collectors, Inc., a non-profit corporation with tax-exempt status. Published monthly for the benefit of its members. All rights reserved; reproduction in whole or part without written permission of National Cambridge Collectors, Inc., and the author is prohibited.

Executive Editor	Alex P. Citron
Research Editor	Les Hansen
Advertising Manager	Jeannie Moore
Circulation	Sharon & Joe Miller

Advertising Rates

Display Advertising (camera-ready):

Full Page	\$50.00
3/4 Page	\$40.00
1/2 Page	\$30.00
1/4 Page	\$20.00
1/8 Page	\$15.00

(Add \$5.00 for each photograph)

Classified Advertising:

10 cents per word; \$2.00 minimum
(Abbreviations and initials count as words)

Dealer Directory:

\$24.00 for twelve-month contract
Text limited by standard box size (see page 19)
Includes FREE listing on NCC website

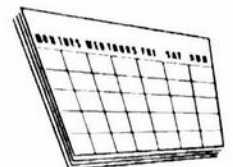
- Payment in full must be received before advertising will be run.
- Cambridge Crystal Ball and National Cambridge Collectors, Inc., assumes no responsibility for items advertised and will not be responsible for errors in price, description or other information.
- Advertising copy is due no later than the 10th of preceding month for publication.

Submissions to The Crystal Ball

By mail: P.O. Box 416 Cambridge, OH 43725
E-mail: NCCcrystalball@aol.com

Deadline: 10th of preceding month

NCC Calendar Upcoming Events...



June 26-28, 2003

NCC Annual Convention, Glass Show & Sale
Pritchard Laughlin Civic Center - Cambridge

August 23, 2003 (tentative)

12:00 noon • NCC Quarterly Meeting & Luncheon
at Theo's Restaurant in Downtown Cambridge

November 8, 2003 (tentative)

6:30 pm • Quarterly Meeting & Educational Program
Holiday Inn - Cambridge



President's Message: Thanks, Sanford!

The last week in January I just had to get out of the Northeast. This winter was really taking a toll on me. The temp had been as brutally cold for as consistent a time as I could remember in the New York area and the snowfall the worst since 1996.

(Ironically, as I'm writing this message, reminiscing about three weeks ago, I should mention that there are eighteen inches of snow on the ground and IT'S STILL SNOWING. Today is the latest Blizzard of the Century on President's Day 2003!).

There was another reason I needed to head south. Last month, my father was diagnosed with early stage dementia that is vascular-related (not Alzheimer's fortunately). For those who know me well, we are already very familiar with the ravages of Alzheimer's. My father-in-law is now remarkably in his FOURTEENTH year of the disease and has lived with Cindy and me for the last ten years.

My Dad's situation is not nearly as extreme, but it is clear that a major lifestyle change is needed ... he can no longer take care of his house alone. And gratefully, over this holiday season Dad has come to this recognition as well. A move to an assisted living environment is the consensus of his doctors, my brother (who is a hospital administrator) and the immediate family.

The next question is "where?". Does he come back north where family is closer, or does he stay in Central Florida where his friends, church and support systems are? That decision hasn't been reached yet, but we are actively investigating all sensible options. Among them - what are the quality of living set-ups near his home?

OK, so here I was needing to escape the winter blahs, needing to go check out homes in Central Florida, and my warped mind thinks next ... when is the Sanford Show?

The town of Sanford is northeast of Orlando on the interstate to Daytona Beach (my Dad lives in the next big town

up the road - Deltona). And, for the last thirty years Sanford has been the home of the twice-annual Sanlando Depression Glass Show, superbly managed and promoted by Millie and Bill Downey.

The Sanford show has special meaning for me in many ways. Before we knew there was a "glass circuit" and were just shopping antique malls and general shows, my late mother, upon retiring to Deltona in 1985, discovered the Sanford Show in 1986.

It was at Sanford that my Mom and Dad met legendary glass dealers like Shirley and Austin Hartsock, Priscilla Southworth (still an important part of our NCC Glass Show!!!) and my late friend Cliff McNeil. It was Shirley who encouraged our Mom to have us go to our first Houston Show. The rest, as they say, is history!

The next year of course, Cindy and I made our first trip to Sanford. And, over the next few years we would time our visits to Mom and Dad's to coincide with the Sanford Show. We had two choices as Millie always has a September show and a January show. Not surprisingly, we tended to go more in January than September!

One of the first visits, Mom had arranged a dinner cruise on Lake Mary right near the Sanford Civic Center. Cindy and I have had many notable boat cruises - beginning with our wedding reception on the San Francisco Bay. We've also been to Venice and, locally, taken many visitors on the spectacular Circle Line around Manhattan. However, there was something enchanting about our Sanford cruise. The food, spirit and company were very special, in a way a "tourist trap" just couldn't capture.

In March 1989, my Mom had a stroke during heart surgery and did not recover. Five days later, she was gone. But that's not really true ... as long as there is a glass show in Central Florida, her spirit still lives with me.

So, three weeks ago, I returned to Florida with lots to do. I found a terrific assisted living place in Deltona. The staff was very welcoming and helpful to me as I was a "walk-in" without an appointment. Just after our NCC Auction, my brother, Dad and I will all head to Florida to check things out and make our plans.

I was able to get a lot done as it relates to my Dad's house. It's an enormous task that is far from over. Plus ... I went back to the Sanford Show.

For the last few years, Millie and Bill have generously given NCC a table to sell books and NCC merchandise like Scottie Dogs. I got to see first hand just how ably this table has been managed by our Fleur de Lys Healy. What a dynamo! She has a huge heart and soul for Cambridge Glass and our club. Great job, Fleur! (Plus, it was great to see other NCC members - including Mark Nye, the Stultz', the Buenting's and Gene Florence.)

Finally, I learned once again that life is full of passages. This was the last Sanford Show. However, it is not the last Sanlando Show. After 31 years of cooperation with the Sanford Civic Center (which I think I heard was being torn down), the show is moving up the road to Deland, Florida and the Volusia County Fairgrounds.

Unfortunately, I did not have a chance during this visit to personally thank Millie and Bill for all their generosity to NCC. It is SO APPRECIATED. But seek them out at their next show (Sept. 19-21, 2003) to thank them for all their help to NCC and the glass world at large! For me, it will always be the Sanford Show. It will take awhile before I can go back to its real name "Sanlando."

There have been so many things so special about "Sanford" - it marks a milestone in our collecting and love of Cambridge Glass, it makes me think of my Mom and smile, it motivates me to do the right thing by my Dad, it gives me a nice place to escape to when it's cold up North. Goodbye Sanford, welcome Deland!

*In Next Month's
Crystal Ball*

2003 Auction Results

...

Convention Registration Form

...

Cambridge Colors: Royal Blue

CARMEN (from page 1)

The Hellmers batch book has 51 formulas for gold ruby, but most of them date to the late 1800s and only one of them has a notation indicating it was a Cambridge formula. That single formula is dated 12/29/1932, nearly two years after Carmen was introduced, and has the name "Cherry Red" attached to it. Why this formula was developed and for what purpose will likely remain a mystery. There are 159 formulas for "selenium" ruby glass (which Carmen is) in the Hellmers batch book. Twenty-six of them have a notation indicating they were Cambridge formulas.

Only eight raw materials were needed to make Carmen and, of course, sand is the base material for all glass. Soda, potash, and lime are standard materials for glass and add flux (fluidity) to the melted glass. Borax is a solvent for metallic oxides (the zinc oxide). Zinc oxide was needed to keep the selenium in the molten glass, because selenium becomes very volatile when heated.

The coloring agents in Carmen were cadmium sulfide and selenium. Cadmium sulfide will produce glass with a yellow color, and selenium gives glass a pink color (it was the coloring agent in Crown Tuscan). However, when the two materials are combined in the same formula, a red glass "might" result. I say a red glass "might" result because, according to the book, *Modern Glass Practice*, cadmium sulfide will only develop color when reheated. The creation of a color by reheating is called "striking" or "warming in" the color.

Carmen probably was colorless or pink when it was cooled from the molten state after the routine processes of pressing or blowing. The glass items developed their red color only when they were subsequently reheated, piece by piece, in the "glory hole". However, if reheating is continued too long or done at too high a temperature, selenium ruby (Carmen) glass becomes cloudy or opaque. Notes

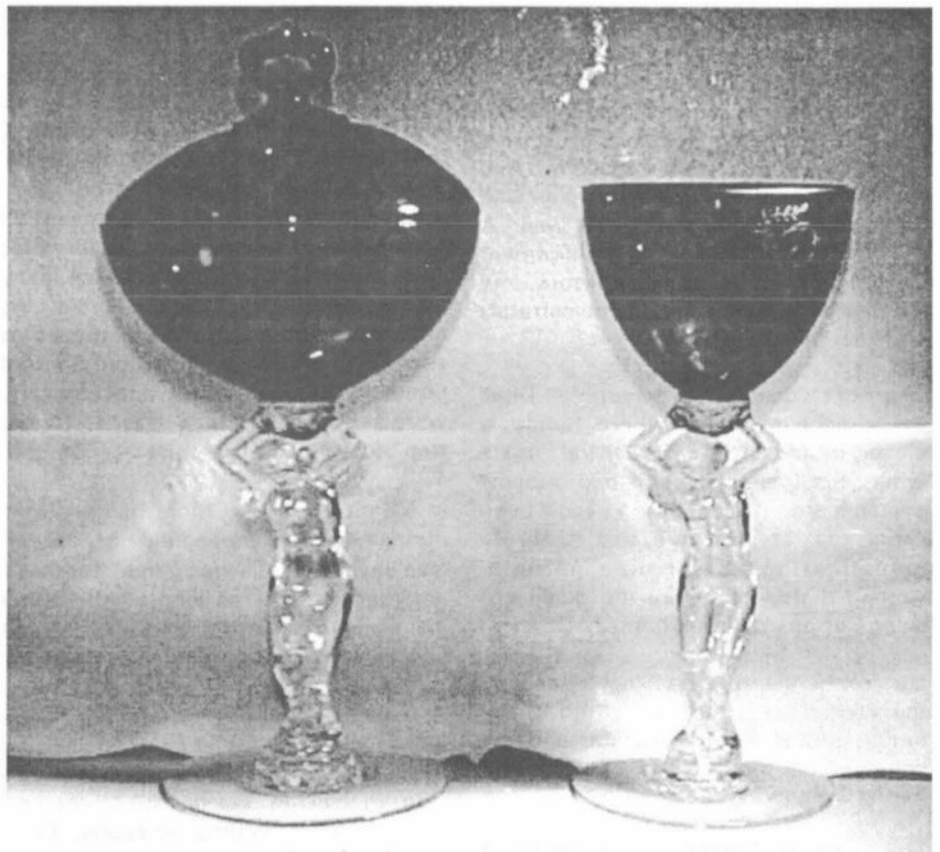
in the Hellmers batch book and in another batch book from a Cambridge worker suggest that Carmen was a difficult color to make because of its sensitivity to the length of time and the temperature for both the original heating as well as the subsequent reheating.

Some Cambridge promotional materials provided to retailers list the wholesale prices of the various colors of the 1930s. All transparent colors were priced the same, except Carmen which was priced 50% to 100% higher than the other colors. This higher wholesale cost has led to conjecture that there was more breakage of Carmen glass at the time of cooling than of glass of the other colors. Perhaps selenium ruby (Carmen) glass had more breakage than glass of other colors; however, there is little doubt that the color of Carmen was difficult to achieve consistently from batch to batch and from piece to piece because of the essential reheating process.

Therefore, one could expect a higher rejection rate of Carmen items than

other colors. Many of the numerous formulas for Carmen have a tremendous amount (more than 50% of the formula) of cullett, which is reused glass; therefore, many Carmen items must have been rejected upon inspection and, therefore, were recycled as cullett. The need to reheat the pressed and blown items for just the right length of time and at just the right temperature to yield the Carmen color probably resulted in greater labor costs, too, which also could have contributed to higher wholesale prices for this color. Despite the greater wholesale cost compared to the other transparent glass colors produced by the Cambridge Glass Company, Carmen must have been a popular seller with the public based on the availability of items of this color for today's collectors.

One of the easiest colors of glass to manufacture is cobalt. Next, we will discuss the production of Royal Blue, which was another color developed by Henry Hellmers for the Cambridge Glass Company.



Cambridge Nudes in Carmen:
Covered Sweetmeat & Claret (etched Portia)

Winter News from the National Museum of Cambridge Glass

by Cindy Arent, Museum Chair

It is difficult to imagine that in just a short time the Museum doors will open for the 2003 season. The same hours of operation will be followed for 2003 and admission for non-members will remain at two dollars.

In order to open in the best condition possible, several Museum projects are in progress or in the final phase. The month of January saw 254 volunteer hours completed in the Museum with many more hours spent off site. Following is a list of projects with an update on each.

Sample Room Glass Purchase - The last piece of glassware purchased from The Bellaire Glass & Artifact Museum has been identified, numbered, entered into the Museum inventory and placed on display. Since many of the pieces were produced in the 1950s, displays had to be rearranged or moved to a different location to accommodate the new items.

Research Library & Education Center - These two rooms have been painted by NCC volunteers. However, the floors still need to be stripped and waxed in preparation for future development.

Feature Display Room - The cases have been cleaned and are ready for the new display. NCC members Linda Roberts and Barbara Wyrick will be creating a display of decorated enamels in this area.

Attention: Colorado Members

What do Denver, Colorado and Cambridge Glass have in common? Not much at the moment, but we'd like to start an NCC Study Group to see what connections we can make. If you have an interest, call NCC member Sandy Mazarakis at 303-423-8923.

Museum Sample Room - An original Cambridge Glass Company photo of a Milk Glass display in the factory Sample Room has been found (see page 14). Charles and Mary Alice Upton have lent their Milk Glass collection to replicate the photo in the Museum Sample Room.

Museum Dining Room - This season, Crown Tuscan will be used to set the table. Gold decorated serving pieces will add to the display that has been designed to tie in with the convention theme "Some Enchanted Evening."

Museum Tour - The self guided tour booklets will be updated for 2003. Hand held cassette players will also be available for visitors to use as they tour the Museum.

Tour Groups - As of January 31, we have 11 bus tours confirmed. Most busses will have 50 people on board so we will need to schedule volunteers to help with each group. I will post a list of tour dates/times in the Crystal Ball. If you have any available time, we would appreciate your help in guiding groups through the Museum. We also have several "Vacation Package" days scheduled through the Cambridge/Guernsey County Visitors & Convention Bureau. The bureau is selling the packages directly to tourists and will pay the NCC directly. Visitors will only need to have their card stamped at each attraction.

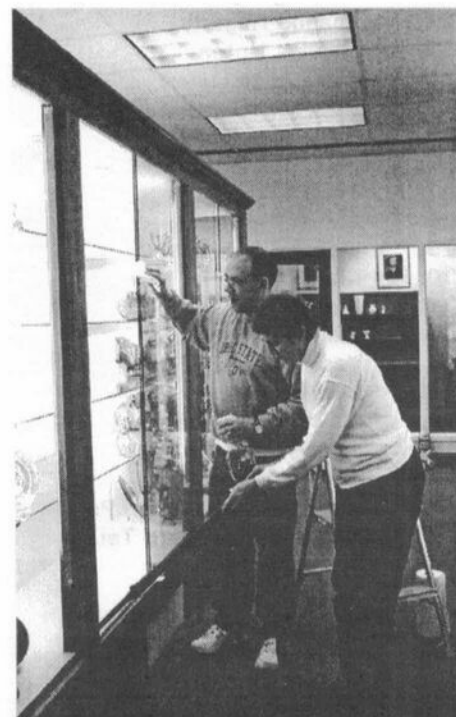
Organizational Issues - Bill Douglas, director of The National Heisey Glass Museum, has been very helpful. Bill has answered our questions and shared the HCA "Tour Confirmation" form which we have adapted to suit our Museum needs.

History of Glassmaking Area - We are hoping to be able to expand the "etching process" section of this display. One or two female bendable mannequins will be needed to

accomplish the expansion. Willard Kolb has been asked to provide the script for this area as we try to educate visitors about how the glassware was actually made at The Cambridge Glass Company.

Guernsey/Licking County Glass Partnership - Representatives from attractions in both counties, as well as members of the Visitors & Convention Bureaus will be meeting at the NCC Museum on March 13 to confirm plans for the "Glass Pass" that will be used this season.

Additional photos, company ads and other memorabilia have been added to the museum display area. Several punch bowl sets have been moved to the area above the showcases and follow the same time line, early to late production. If you were unable to visit the new Museum in 2002, please try to visit this year. You will be very proud of what NCC has accomplished!



David Ray & Sharon Miller
"clean up" at the Museum

CENTURY CLUB THANK YOU !!!

A BIG THANK YOU TO THE MEMBERSHIP FOR THEIR GREAT SUPPORT OF THE CENTURY CLUB INITIATIVE ! SINCE IT WILL NOT BE POSSIBLE TO THANK YOU PERSONALLY, PLEASE KNOW EACH AND EVERY ONE OF YOU IS APPRECIATED FOR YOUR CONTRIBUTION. OVER \$26,000 WAS RAISED TO BE SHARED 50/50 BY THE ENDOWMENT FUND AND THE MUSEUM. I HOPE THAT 2003 SEES AN EVEN LARGER NUMBER OF MEMBERS SUPPORTING THE CAUSE. THE CENTURY CLUB IS AFFORDABLE, TAX DEDUCTIBLE, AND COMMITTED TO A MUSEUM PROJECT.

SHARON MILLER
CHAIRMAN OF GRANTS & FUNDRAISING

Century Club 2002			
1.	Robin A. Cook	47.	Van K. Smith
2.	Lynn Welker	48.	Florence Willmot
3.	Mary Welker	49.	Patricia Harrison
4.	Bill Carle	50.	Charlene Hafer
5.	Mark Nye	51.	Elizabeth Krempasky
6.	Tarzan Deel, Jr.	52.	Loretta G. Weeks
7.	Dennis Snyder	53.	Linda Salts
8.	David Mitchell	54.	Margaret Gotschall
9.	Kenneth Filippini	55.	Dale Gotschall
10.	Oscar Knicely	56.	Connecticut Cambridge Boosters
11.	Laura Knicely	57.	Barbara K. Wyrick
12.	Frank Wollenhaupt	58.	Joan McDowell
13.	Ron Hufford	59.	James McDowell
14.	George Stamper	60.	Sue Cameron
15.	Shelley Cole Citron	61.	Ellen Teller
16.	Bonnie Lippy	62.	Nancy J. Finley
17.	Fred Schafer	63.	Gary French
18.	Cindy Arent	64.	Ann Mang
19.	Mike Arent	65.	Robert Ellis
20.	Bill Hagerty	66.	Marcia Ellis
21.	Joanne Hagerty	67.	Beverly Groshens
22.	Charles Upton	68.	Fran Pavlov
23.	Mary Alice Upton	69.	Mary Holmquist
24.	Marybelle Teters	70.	Jo Anne Lyle
25.	Mike Strebler	71.	Beverly Faiello
26.	Lisa Strebler	72.	Katharine Berry
27.	Terry Roh	73.	Paul B. Miller
28.	Daniel Kuczewski	74.	Pauline T. Harris
29.	Melissa Treier	75.	Don Rogers
30.	Max Treier	76.	Carolyn Sue Mitchell
31.	Karen Treier	77.	Carolyn A. Mitchell
32.	William Saylor	78.	Mary Anne Brock
33.	Vessie Saylor	79.	Bud Walker
34.	Ken Rhodes	80.	Anna Walker
35.	Melinda Thaxton	81.	Joseph Citron
36.	Joe Miller	82.	William Hong
37.	Sharon Miller	83.	Morris M. Oldham
38.	In Memory of Sherryl Ponti	84.	Michael Colella
39.	In Memory of Ward Teters	85.	Joan Bumina
40.	Kathy Chester	86.	Betty Wanser
41.	Ruth Haver	87.	Mary Ann Johnson
42.	Elizabeth Moe	88.	James H. Jones
43.	Clyde Ingersoll	89.	David B. Lake
44.	Charles Heincy	90.	Kathy Lake
45.	Leta Heincy	91.	Jane Repko
46.	Patricia Dixon	92.	Annemarie DuBois
		93.	Peggy Scott
		94.	Marjorie J. Clayton
		95.	Freeman L. Moore
		96.	Boneva Blankenship
		97.	Ed Blankenship
		98.	Fostoria Glass Collectors
		99.	Roger J. Hawk
		100.	Charles T. McLean
		101.	Don L. Spencer
		102.	Crystal Nelson-Mixdorf
		103.	Doris P. Shepherd
		104.	Harold C. Gabler, Jr.
		105.	Florence Rempe
		106.	Kay E. Larsson
		107.	Swede Larsson
		108.	Ruth P. Lee
		109.	Kathryn Nussbaum
		110.	Shelby Nussbaum
		111.	Mark D. Rossman
		112.	Margaret V. Downing
		113.	Robert Downing
		114.	In Memory of Phyllis D. Smith
		115.	Dennis Travers
		116.	Lorraine Weinman
		117.	Priscilla Hayler
		118.	Karen Friedly
		119.	George A. Fogg
		120.	Cheryle A. Stone
		121.	M. Dale Moody
		122.	Kathryn L. Hetherwick
		123.	Donna R. Kleintjes
		124.	William T. Alexander
		125.	Roy T. Peterson
		126.	Lawrence B. Everett
		127.	Susan F. Everett
		128.	Daniel Miecznikowski
		129.	Sally J. Gray
		130.	Judy Fulton
		131.	Lester Yarnell
		132.	Helen Klemko
		133.	Judy Momirov
		134.	Vivian Dorsett
		135.	Mark T. Dorsett
		136.	Diane Gray
		137.	Leah Stern
		138.	Jeanne H. Coleman
		139.	Clyde E. Coleman
		140.	Max Miller
		141.	Sue Ann Wilson
		142.	Ralph Litten
		143.	Dorothy M. Kell
		144.	David W. Hartley
		145.	Elaine M. Storck
		146.	Marcy Allenbaugh

"Some Enchanted Evening" Convention 2003 Update #3

by Shelley Cole Citron

It is now March, the auction is over and we have to count the days until we can return to Cambridge for Convention 2003 – Some Enchanted Evening. How many of us have said, "If you'd told me 10 (20, 25) years ago that I'd be traveling to Cambridge, Ohio, two or three times a year, I'd've told you you were crazy." And maybe we are a little crazy, but Convention time in Cambridge is truly one of the highlights of my year. Gathering with all of the friends made at past conventions and meetings, meeting new friends, drooling over the displays at the programs, shopping the wonderful sales floor at the Pritchard Laughlin Civic Center, the Glass Dash and the local antique stores, comparing notes about the wonderful finds, the almost-but-not-quite in time missed opportunities, laughing at this insanity that is collecting Cambridge Glass. I wouldn't miss it for the world. I hope you won't either.

And for those of you who don't travel to Cambridge two or three times a year, make a special effort to get there at least once this year. We say it over and over again, but you just cannot imagine what Convention and the Show & Sale is like until you have witnessed it. As the doors to the sales floor open and the line surges forward....walking (okay, running) into that huge room filled with **Cambridge Glass**. Joy and Mary Beth do a terrific job of tracking down dealers who truly specialize in Cambridge. You will see things here that you will not see anywhere else.

Convention doesn't materialize out of thin air though. It takes a lot of work from a lot of people and we could use a few more bodies the weekend of convention. If you can give us a couple hours during the weekend, let Georgia or me know. We have some very specific needs

that we know of now. These include manning the registration table for an hour or so (Thursday, Friday or Saturday), helping with the table decorations for the banquet (Saturday afternoon) and running errands (various times). Our email addresses and phone numbers are at the end of this article. Please let us know that you can help out ahead of time. We'll both sleep a little better knowing that we'll have some assistance.

In our last update, we mentioned that we will have two educational programs during convention. This month we are able to announce our Banquet Speakers (drum roll please). Lori and Michael Palmer who are the authors of the recently released book, *Charleston Decorations* will be joining us on Saturday night to fill us in on the relationship between Cambridge and Charleston. I understand they'll be bringing some very special pieces to share with us.

Soooo, if you haven't already done it, **MAKE THOSE TRAVEL PLANS NOW!!**

Next Month:

The Registration Form

Till then,

Shelley Cole Citron
slcunicorn@aol.com
(434) 296-2531

Georgia Otten
motten@graphtronics.net
(937) 274-2662



2003 NCC Convention

Motel Information

All of these motels are located in Cambridge at Exit 178, Ohio route 209 off Interstate 70. Remember to mention that you are attending the National Cambridge Collectors Convention. There are limited rooms available at these rates. When they are booked, rates may be higher.

AMERIHOST CAMBRIDGE

Route 209 South
800 434-5800 or
740 439-1505
\$60 single or double,
includes continental bkfst
(indoor pool)

BEST WESTERN CAMBRIDGE

1945 Southgate Parkway
740 439-3581
\$55 single or double,
includes continental bkfst

HOLIDAY INN CAMBRIDGE

2248 Southgate Parkway
740 432-7313
\$69/night, 2 or more nights
\$75/night, 1 night stay

COMFORT INN CAMBRIDGE

Southgate Parkway
740 435-3200
\$60 single or double
includes continental bkfst &
evening snacks in the lobby
(indoor pool)

DAYS INN CAMBRIDGE

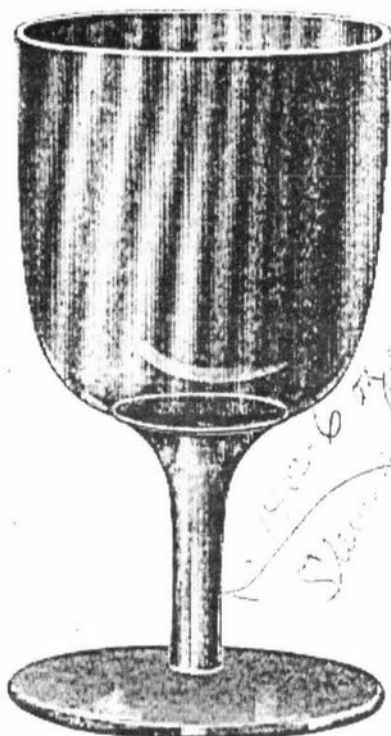
2328 Southgate Parkway
740 432-5691
\$59 single or double
includes continental bkfst
> *Must book by 4/1/03 for
this rate*

BUDGET INN - DEER CREEK

2325 Southgate Parkway
740 432-6391
\$45.95 single or double
weekly rates available
(indoor pool)

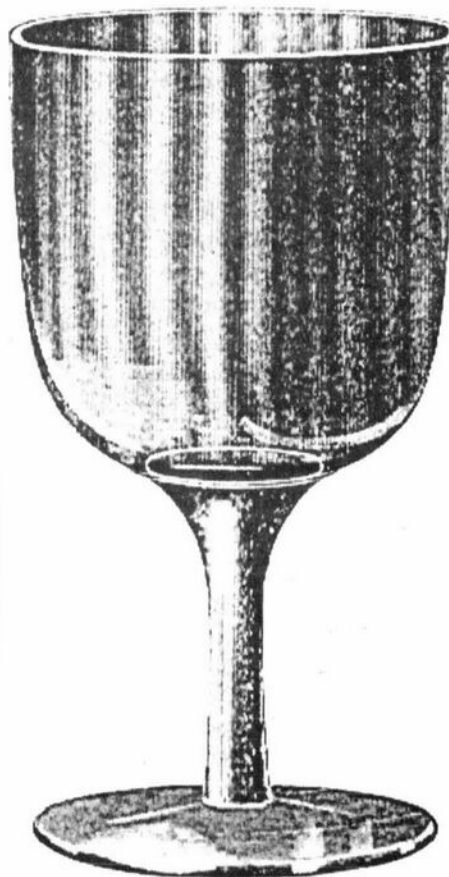
More reprints from the 1906 Cambridge Catalog

160 No. 681 Line Stemware, Cup Foot.

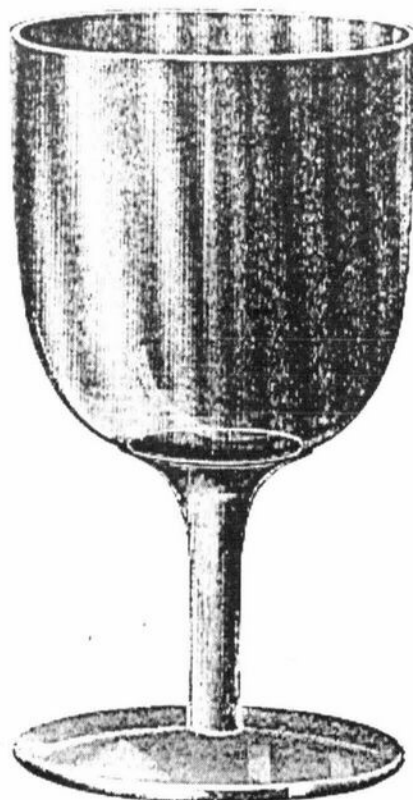


7 ounce Goblet.
Packed 14 dozen in a barrel.

SCALE, FULL SIZE.



11 ounce Goblet.
Packed 9 dozen in a barrel.



9 ounce Goblet.
Packed 10 dozen in a barrel.

Sewing Lamps and Founts.

SCALE, HALF SIZE.



No. 2573 C Sewing Lamp.
Packed 2½ dozen in a barrel.



No. 2578 O Sewing Lamp.
Packed 2½ dozen in a barrel.



No. 2579 C Sewing Lamp.
Packed 2½ dozen in a barrel.



No. 2614 Fount.
Packed 4½ dozen in a barrel.



No. 2615 Feeder Fount.
Packed 4½ dozen in a barrel.



No. 2622 Kitchen Fount.
Packed 4½ dozen in a barrel.



No. 2623 Feeder Fount, with handle.
Packed 4 dozen in a barrel.

Reprints from the 1906 Cambridge Catalog will continue over the next few months.

Century Club (cont'd)

147. Dale Allenbaugh
148. Kris Eskelin
149. Patricia Janecek
150. Warren Mason Nichols
151. Carl Beynon
152. Shirley Beynon
153. Wilmer U. Bryan
154. Phyllis N. Brian
155. David J. Chorey
156. Evelyn P. Daniel, MD
157. Fred Lovejoy
158. R. Clarke West
159. Ronald A. Buening
160. Jim Braue
161. Frank N. Gready
162. Jack W. Lyttle
163. Jean Cushman
164. Helen M. Andrews
165. Barbara A. Stewart
166. Edwin R. Nixon
167. Billy W. Dear
168. Margaret F. Bowman
169. Shirley Daughtery
170. Willard P. Kolb
171. Norma J. Kolb
172. Lynn E. Kolb
173. David W. Kolb
174. Lisa K. Kolb
175. Jeffery A. Ross
176. Jill D. Ross
177. Wanda Korson
178. Julie Buffenbarger
179. James E. Buffenbarger
180. Sandra L. Buffenbarger
181. Marjorie Farlow
182. Janice Applegate
183. Pam Earussi
184. Linda Louise Roberts
185. Dorothy Rieker
186. Squeek Rieker
187. Cathy S. Stolberg
188. Nancy E. Misel
189. Evelyn Buenting
190. Anthony E. Dahnk
191. Barbara Burke
192. Arthur M. Gray
193. Donald Tinney
194. Gerri Cook
195. Richard B. Bennett
196. Sally Bennett
197. Irene E. Monaco
198. JW Courter
199. Long Island DG Society
200. James F. Laver
201. Janice Laver
202. Bev Stamper
203. Helen H. Boyt
204. Phillip E. Cole
205. Nancy Cole
206. Roy Isaccs
207. Doris Issaccs
208. James Hetherwick
209. Dwayne L Lippy
210. Fleur H. Healy
211. Gerald Kuczewski

212. Robert D. Robinson
213. William A. Carlson
214. Linda K. Adkins
215. Cambridge Lions Club
216. Milbra Long
217. Lynne R. Franks
218. H. C. Mason
219. Mrs. H. C. Mason
220. Edwards Construction
221. Mary E. Misel
222. Leslie S. Taylor
223. Beverly J. Hanson
224. Ralph J. Turner
225. Bill Glass
226. Betty Glass
227. Ruth H. Quintrall
228. Richard G. Taylor
229. Miriam Simmons
230. August Simmons
231. David B. Ray
232. In Memory of Bert D. Huff
233. In Memory of Blodwin & Will McCartney
234. Richard D. Jones
235. Cindy Jones
236. Trevor J. Robinson
237. Gretchen A. Bennett
238. Isabel Giroux
239. Martha J. Swearingen
240. Lynn B. Swearingen
241. Mark A Thompson
242. Kay Marchant
243. Richard R. Rietz
244. Mary Lou Nash
245. Joyce Dawson
246. Robert Buenting
247. Dr. Barbara Ritchin
248. David T. Loss
249. Robert Arnold
250. Jane Morton
251. Timothy M. Cook
252. Robert Gallagher
253. Joseph A. Andrejcak
254. Michael E. Morris

Thank you, one and all

Back Issues of
The Crystal Ball
are available

Sold by the year:
1999 • 2000 • 2001 • 2002
\$5.00 per year
see page 18 to order

It's Coming: Silent Auction at the Convention

by Barbara Wyrick

It's already time to think about one of the ways our club raises money for Museum operations – the Silent Auction (previously the Mini-auction) which will be held during the Friday night President's Reception. We want this year's auction to be fun for everyone and raise lots of money for the club, but **we need donations of some great pieces of glass.**

We are asking for glass in perfect condition with a minimum value of \$25. And, to entice everyone, besides the tax charitable deduction each donation creates, this year we are giving some wonderful prizes for the top three donors whose items bring the highest bid amounts. Possible prizes include a spot at the front of the line for next year's glass show and a \$25 voucher to use at any dealer in this year's show.

Please think about donating a piece of glass and contact Linda Roberts (lrobert2@columbus.rr.com) or by phone at (614) 337-9775 (evenings) or (614) 629-2461 (days) or Barbara Wyrick (bwyr@ee.net) of the Wildflowers Study Group. Don't wait, we would like to get our glass list compiled soon so we can publish it in the Crystal Ball. More details will be coming in future editions.

MEMBERS ONLY

Visit the "Members Only" section of the NCC's website at

cambridgeglass.org/NCCmembers

Features available only to NCC Members include:

Reprints of Research Articles
Minutes of Board Meetings

User name: NCC
Password: TriangleC

Study Groups

The NCC has several study groups; these are the groups currently active and holding regular meetings. Listed below is contact information for these study groups.

If there is no study group in your area and you are interested in starting or joining a new study group, please contact the Crystal Ball or call NCC Study Group Advisor Ken Filippini at (201) 670-0990.

When e-mailing a study group contact, we suggest putting "NCC" or "Study Group" in your subject line; otherwise you may get dumped as spam.

#13 - Miami Valley Study Club
Miami Valley area, Ohio
Larry Everett
db0098@dragonbbs.com
(937) 675-6491

#14 - The Cambridge Cordials
Cambridge, Ohio
Lorraine Weinman
blweinman@hotmail.com
(330) 966-9376

#15 - North Texas Cambridge Study Group
Dallas area, Texas
Scott Pierce
scottpierce1@msn.com
(817) 427-9510

#16 - Elegant Glass Collectors
PA & NJ
Bill Dufft
billnvon@aol.com

#17 - The Columbus Wildflowers
Columbus, Ohio
Barbara Wyrick
bwyr@ee.net
(614) 291-0361

#18 - The Cambridge Triangles
VA, MD, DC
Alex Citron
apcpenguin@aol.com
(434) 296-2531

NEW STUDY GROUP!!!

#19 - NE Ohio Cambridge Collectors
Akron-Canton area, OH
Hilda Pfouts
pfoutshi@aol.com

SMITH COLLECTION CAMBRIDGE GLASS AUCTION SATURDAY, MARCH 29 10:00 AM

From the Estate of Phyllis & Bill Smith, deceased, the heirs will sell the remaining Cambridge Glass Collection at auction at **IBEW UNION HALL**
610 LANCASTER AVE in Reynoldsburg, Ohio.
(From I-270 east of Columbus, take East Broad Street to Reynoldsburg-New Albany Road, then south to sale. Signs Posted)

This auction will not be catalogued, but will be set up in rows on tables and sold in that order. Auction will include: Figural Flower Frogs; handled baskets; small swans; Geisha figure; Scotty Dog decorated ball jug & glasses; many etched pieces, colors and opaques; candleholders; lots of stemware (odd pieces); Caprice; misc. cordials & wines; misc. tumblers; decanters; sign; pipe humidor; various pitchers; NCC Commemoratives; glass reference books; early Nearcut pieces (incl. rare Arched-base Daisy candlesticks); other Cambridge collectibles.

There will be over 500 lots. This is only a brief notice!!! Please try to attend or send someone in your place. I can fax you a more complete listing on request.

Sale by order of heirs; Ed Smith, Executor

Terms: Cash or check • Doors open for preview at 8:00 a.m.

Auctioneer: Craig Connelly (740) 587-2874

Granville, OH Antiques & Estates

John Kennard, Kevin Burchett, Apprentice: Chris Marlowe

Avid Cambridge collectors all their married life, the Smiths helped found and further the NCC. it is with great pride that we represent them in this fine sale.

Study Group #14 The Cambridge Cordials

The Cambridge Cordials met at the home of Carl and Shirley Beynon on Saturday, October 19, 2002, at 7:00 p.m. for the annual Christmas gathering. Present for this meeting were: Mike and Cindy Arent, Rich Bennett, Carl and Shirley Beynon, Joe and Sharon Miller, Judy Momirov, Mike and Lisa Neilson, Jeff and Jill Ross (and Patrick), Marybelle Teters, Lindy Thaxton, Mary Welker, Lynn Welker, and Lorraine Weinman.

The business portion of the meeting was dispensed with quickly. The treasurer's report was made available and other business was completed in order for the visiting and feasting to begin. Gourmet delicacies were sampled by all from the wonderful covered dish treats that each member brought to share.

Cambridge glass came to life at the meeting. Everyone wrote down three Cambridge Glass words or phrases. Thereafter, a lively game of Charades challenged and entertained the group. Such sights you have never seen before!

continued on page 12

If you know about any upcoming glass shows or other glass events, please pass the word on to us at least six to eight weeks before the show dates. These listings are free of charge.

Upcoming Glass Shows

March 8 & 9:

Chicagoland D.E. Glass Show & Sale
Concord Place Midwest Conf. Ctr.
Northlake, IL
E-mail: schmidt.tim@attbi.com

March 22 & 23:

Long Island Depression Glass Society
Show & Sale
Freeport, NY
Call (516) 798-0492

March 22 & 23:

Hillsboro All-American Glass Show
Washington County Fairplex
Hillsboro, OR
Call (503) 640-9122

March 28 & 29:

North Jersey D.G. Club's
Glass & Pottery Show and Sale
Guardian Angel Church Auditorium
Allendale, NJ
Call (201) 666-6111

Study Group #14 cont'd.

In lieu of a gift exchange among the members, the Cordials presented the Museum with some "Christmas presents." The following items are being donated to the Museum: a Summit 8½" Cobalt swan for the reproductions area, a Crown Tuscan urn vase done in gold Diane, a #668 goblet which appears in the 1903 catalog, a Wedgwood Ram's Head bowl (like the one that Cambridge copied), and a star cutting and etch in gold on an early '30s twin salad dressing bowl.

To finish up the fun evening, the group gathered around for a great Show & Tell session. Among the items shared were: a three-part Crown Tuscan with Gardenia 3500 covered candy, an Amethyst cordial decanter with communion type whiskeys on an oval tray, a Heatherbloom etched Diane footed ashtray, a clock out of the treasurer's office at the Cambridge Glass factory, Arthur J. Bennett's letter and calendar from 1934 (which appeared in the Crystal Ball several years ago), an 8½" Milk Glass swan with Charleton decoration, a large satin cigarette box with colored enamel ski scene, a Carmen nude cordial with satin stem, a Carmen covered honey, a Helio community dresser set, and a scroll 1927 Christmas greeting.

Submitted by
Lorraine Weinman



This clock was in the Treasurer's office at the Cambridge Glass factory.

New Study Groups are currently being organized in Colorado, southern Michigan and south Florida. For more information, call Ken Filippini at (201) 670-0990.

Study Group #17 The Columbus Wildflowers

On Thursday, January 9, 2003, the Wildflowers met at the home of Linda and Bryan Roberts at 7:00 pm. Refreshments of crab balls, cheese and fruit and ice cream cake decorated in opaque colors were served.

Our meeting was called to order by President Linda Roberts. Under New Business, our study group has been asked to coordinate the Silent Auction at Convention this year, so we had an intense brainstorming session on how to make this event fun for everyone and lucrative for the club. We will be asking for glass donations in perfect condition in upcoming Crystal Balls.

Our Program this month was "Opaque Colors in Cambridge," and Linda passed out a handout of the various opaques and when the first and last references were found in the catalogues. She also had a lovely display of opaque items, to which study group members added.

We began the discussion with Opal and Turquoise, then looked at Early Ebony, introduced in January 1916, and reintroduced in 1922 until at least the late 1940's, with a gold decorated Stick Vase example. We discussed some confusion about Azurite versus Jade and compared an Azurite Vase (a true blue color) to a Jade Candlestick with silver overlay (a medium soft green color). Although the warm yellow Primrose color was only produced for about 2 years beginning in 1923, we had more examples of it than most of the other opaques, and talked about the large amount of Primrose items that can be found. Our Primrose pieces included a footed Compote with Greek Key design; a Bowl with black enamel outlined edges; a three toed Bowl with irridized coloring; and a three toed Bowl with irridized and black enamel deco designs. We moved on to Helio, the purple color with wide variations in the depth of the color, and looked at a gold decorated Vase compared to a Footed Compote with nearly translucent edges that you could actually see through. We felt that Helio was seen mostly on Community line items, except for a few pieces like the Ramshead bowl. We also compared

Violet (produced late-from 1955 to 58) on an Everglade vase to Helio, and the Violet was a more dull color, without the fire when held to the light. This was very similar to the way Carrara (a fiery white) in a Powder Jar, compared to Milk (a more solid color without the fire which was also produced in the late reopen period) on an Everglade line handled Beer Stein.

Many of the Cambridge opaque colors were also used by DeVilbiss on their lines of sometimes highly decorated Perfumes.

Other opaque colors we studied were Ivory (light cream color) on a 12 inch bowl with gold encrusted Willow etching and a beautiful Perfume with enamel decoration; Avocado (a green tending toward yellow) on a Powder Jar with gold encrusted Dresden Basket; Windsor Blue (icy blue) on a shell foot Cornucopia; Ebon (a rough matte black) on a Cambridge Square vase with gold Seagull design; and the ever popular Crown Tuscan (called Coral when used on the Seashell line). Again variations in density were studied from the nearly see-through edge of a Shell plate to the nearly white color of a 3 inch Shell Ashtray to a large Paste Mold Vase to an almost tan color of Crown Tuscan on a footed Shell Vase with Charleton Roses.

Other Show and Tell items included a Gold Krystal Draped Lady and a large Carmen Georgian tumbler.

Our meeting adjourned at 10:30 PM.

New members in the Columbus, Ohio area are always welcome and can contact either Linda Roberts at lrobert2@columbus.rr.com or Barbara Wyrick at bwyr@ee.net

—respectfully submitted by
Barbara Wyrick, Secretary

Study Group #13 Miami Valley Study Club

The meeting of January 14, 2003 was called to order at 7:00 p.m. by the president, Larry Everett. There were 14 members present: Will Acord, Larry Everett, Diane Gary, Georgia and Mac Otten, David Rankin, David Ray, Judy and Ken Rhoads, Fred Schaefer, Helen and John Wilt, Frank and Vicki Wollenhaupt.

The minutes of the November, 2002, meeting were approved as mailed. The Treasurer reports a previous balance of \$220.07, receipt of \$30 in dues and \$5 donation, leaving a balance of \$255.07.

David Rankin discussed the opening of the glass exhibit at the Boonshoft Museum. The delivery cases for the glass exhibit are to be delivered today, January 14. The set up for the display will be at 5:00 p.m. on Saturday. Enter thru the back door of the museum. The opening reception will be on Friday, January 24 from 6-8 p.m. at the museum. The attire is dressy casual. RSVP's should be made by January 17.

The club will present 6 programs over the course of the exhibit, all on Sunday afternoon at 2 p.m. Feb. 16, Georgia Otten on colors; March 10, Frank Wollenhaupt on Cambridge nudes; April 13, by the Bowmans on candlesticks; May 18, Fostoria by the Huffords; June 8, by David Ray on swans and flower frogs; July 13 by Larry Everett on Everglades.

Georgia Otten gave an update on convention plans. Miami Valley will not be responsible for a program.

The next meeting will be on February 11, 2003. For the program, each member is to bring a strange, weird, or unusual piece of Cambridge, and explain why it meets this criteria.

There being no further business, the meeting adjourned at 7:15 p.m.

Show and Tell included: #3075 32 oz decanter in amber with sterling overlay; #1372 Pristine 28oz decanter with cut stopper and original label; #1155 Everglade 3-footed candlestick; #405 Aero-optic 9" willow blue footed nappy with #732 etch; #2845 Automobile 2 1/8 oz candy container (96 rib hood version); #146 Wetherford 4" sweetmeat in peach-blo with #39 engraving; #3 base or foot for bowls or vases in Madiera; #2653 Near Cut table

The Museum at Replacements, Ltd.

Yes, there is a great glass museum at the headquarters of Replacements, Ltd. in Greensboro, NC. And yes, we have a fascinating article which tells us all about their collection and the whole Replacements, Ltd. operation.

We just learned that if we wait until May, we can add some outstanding photos to the article, so we're holding off for two months. Keep watching your mailbox!!!

tumbler; #2768 Near Cut low footed compote.

Georgia Otten presented a very interesting program on Cambridge milk glass.

Respectfully submitted,

Diane H. Gary
Secretary

Study Group #16 Elegant Glass Collectors

The Elegant Glass Collectors study group met on Saturday October 19, 2002 at the home of Loretta and Charles Weeks. Members attending were Ken and Jane Filippini, Paul and Gail Duchamp, Bill and Yvonne Dufft, Diana Rizzo, Joanne Berringer, Myrle Scott and Tom Mintz.

A moment of silence was held for study group member Pam Earussi's passing. She was the Study Group Secretary for many years. Gail Duchamp was nominated and elected to fill the position of Secretary.

At this meeting under old business, Bill Dufft reviewed progress to date on study group's fundraiser, and he will get back to the group at a future meeting with further information. Under new business we discussed the upcoming show in Harrisburg (November 22-24). Set-up and booth staffing for the show was worked out and scheduled.

The group then discussed thoughts on adding new members, adding more structure to the meetings, and what the group's purpose should be.

Our show and tell portion was next and the following pieces were brought. Ken Filippini: Cambridge Lamp - Gold encrusted Rosepoint on Royal Blue. This lamp was transformed from a vase. At this time, there are only a

couple of pieces Royal Blue Rosepoint that are known.

Bill Dufft: Five part Farber relish. The Farber was cutout to accept the glass. This piece was in the 1940-41 catalog. Bill found this unusual piece in Brimfield. Farber Fruit bowl w/ 4 knives (bakelite handles) and a 3400 insert in Amber. This Fruit Bowl was designed the same as the side-handled ice tub. It was made in the 1940's. Bill was lucky enough to purchase this beauty on Ebay.

Tom Mintz: Brought an extensive collection of his vases, including tall pink Chrysanthemum with Betty etch, Blue Chrysanthemum 278 vase with Betty etch, Blue Cleo vase, Green Cleo vase, Nautilus, Chantilly w/Sterling, Pink Rosalie, Caprice in Amethyst, Tulip in pink, Amber #736 Bird etch.

The delicious spread served by Loretta and Charlie was enjoyed. After we had our fill of scrumptious delights, Charlie presented us with an informative program on Crown Tuscan and Alacite. Loretta and Charlie have a vast collection with some very rare and unusual pieces. We learned that Crown Tuscan was made by Cambridge from 1932 until the factory closed in 1954. Alacite was made by Aladdin. Charlie talked and showed us how the different colors were made, the difference in the coloring, 2 color pieces (such as Ebony & Crown Tuscan together) different stamps, decorations of Charleton, etching including the hardest to find, and enamel decorating. He showed us a Rockwell Silver Shell plate signed by Dickens, Nudes, Vases, Ice Bucket, Tombstone Bookends and Double Dolphin Candlesticks. We ended with a discussion

continued on page 18

**SPRING
DEPRESSION GLASS
SHOW & SALE**

FREEPORT RECREATIONAL CENTER
130 East Merrick Road, Freeport, LI, NY

SATURDAY, MARCH 22, 2003 ◊ 12:00 TO 6:00 PM
SUNDAY, MARCH 23, 2003 ◊ 10:00 TO 4:00 PM

<i>Door Prizes</i> <i>References Books</i> <i>Unlimited Parking</i>	Grand Prize Luncheon Set PINK VICTORY	<i>Free Depression Glass</i> <i>TD & Appraisal</i> <i>Sunday Only</i> <i>(Limit 6 Pieces)</i>
---	---	--

DONATION \$5.50 WITH THIS FLYER • 2 FOR \$5.00 EACH

Sponsored By
The Long Island Depression Glass Society, Ltd.
For Information Call (516) 798-0492



HILLSBORO ALL☆AMERICAN

11th annual
GLASS SHOW & SALE

Featuring American ☆ glassware
☆ pottery ☆ and ☆ dinnerware ☆



**Special Guests: Randy Coe, glass author
Donna & Ron Miller, publishers of Old Stuff
and Juanita Williams, Fostoria Glass**

March Washington County
22 & 23, 2003 Fairplex
Sat. 9 am to 5 pm 874 N.E. 34th Street
Sun. 11 am to 4 pm Hillsboro, Oregon

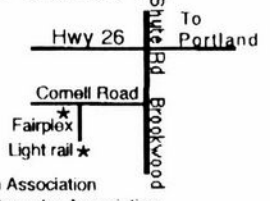
Plan on attending our seminars about glass.
Saturday times: 11:30am Fenton Glass
1:30pm Blenko Glass
Sunday: 12:30pm Decorating with Fostoria Glass

Glass Repair • Reference Books • Educational Displays •
Glass Identification with all Donations to benefit the
Washington County Library •

Admission \$6.00
w/NCC card \$4.00

For more information:
Debbie (503) 640-9122

Sponsored by Pacific NW Fenton Association
Member of Antique & Collectibles Show Promoter Association



An original photograph of Cambridge Milk Glass in the factory's Sample Room.
A similar display of Milk Glass will soon be on view at the National Museum of Cambridge Glass.

I came upon this reprint when I was looking through old issues of The Crystal Ball (February, 1983). I confess I never knew Cambridge made baby bottles, but why not? They made just about everything else at one time or another! I think this is a fascinating bit of Cambridge history, which Frank & Vicki Wollenhaupt originally shared with us twenty years ago. I'm re-running it just because it's so interesting and unusual. Hey... you think I might find one gold-encrusted Elaine??????

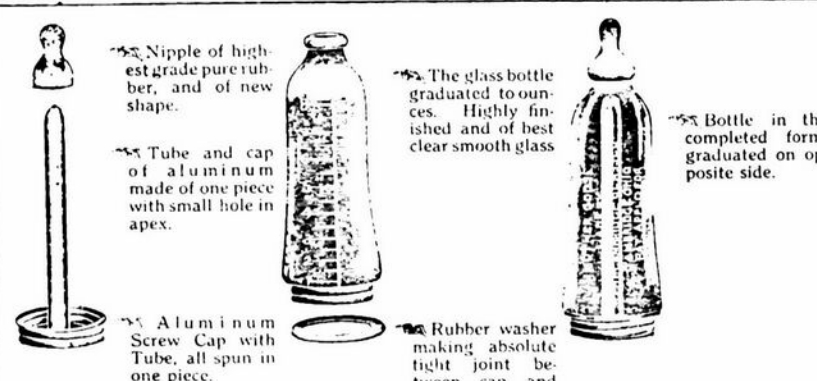
-- The Editor


The Mother Goose Nursing Bottle


STRICTLY SANITARY


Fully Protected by Patents


Made and Sold by
THE CAMBRIDGE GLASS COMPANY
Cambridge, Ohio, U. S. A.





 Nipple of highest grade pure rubber, and of new shape.

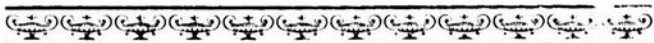
 Tube and cap of aluminum made of one piece with small hole in apex.

 Aluminum Screw Cap with Tube, all spun in one piece.

 Rubber washer making absolute tight joint between cap and bottle.

 The glass bottle graduated to ounces. Highly finished and of best clear smooth glass.

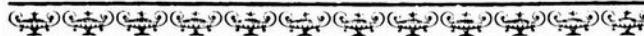
 Bottle in the completed form, graduated on opposite side.



THE MOST SANITARY BOTTLE made. Easily taken apart, wide open ends, makes easy cleaning; all parts are very simple, and made of the smoothest and best material.

The objectionable rubber coming in contact with the milk is reduced to a minimum.

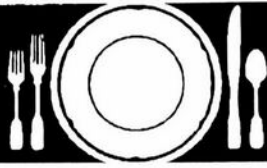
Absolutely "Non-Colic." The small hole in the apex of the aluminum tube allows the air to flow into the bottle and prevents the nipple from collapsing.



The admission of air with the milk is strongly advocated by eminent doctors.

When reheating the center tube has great advantage over ordinary bottles, as it permits the heat to rise in center and causes uniformity of temperature.

The Glass being open at both ends lends strength, and it will resist a hard knock before breaking.



Stems Without Thorns

As the world's largest supplier of old & new china, crystal, silver and collectibles, Replacements, Ltd. has more than 700 different patterns of Cambridge crystal.

And however much we enjoy selling pieces that were once thought irreplaceable, we love buying them as well. Thanks to people like you, our crystal inventory currently numbers in the hundreds of thousands, and the numbers keep growing every year.

So, if you've been unsuccessfully searching for that elusive piece of Cambridge — or any other type of fine crystal — call us for a free list of pieces available in your pattern. And, if you're looking to sell pieces you currently have, we can help you there, too.

REPLACEMENTS, LTD.
China, Crystal & Silver • Old & New

1-800-REPLACE
(1-800-737-5223)

1089 Knox Road,
PO Box 26029, Dept. CB,
Greensboro, NC 27420
www.replacements.com

WE CLEAN CLOUDY GLASS! SATISFACTION GUARANTEED

Yes, *it is true* that we can really restore the interior of your cruet, vase, decanter and other internally etched items back to near original condition.

We do not oil, wax or cover up the sickness in any way!
We actually remove it.

No items are too sick to clean! If we cannot clean an item to meet your satisfaction, the cleaning is FREE!

Send no money up front. When we return your item a bill will be enclosed for the cleaning and postage. If you are not fully satisfied, only the return postage is requested.

Most items clean in 7-8 weeks. All glass is handled and cleaned at your risk. Some very cloudy items may take several additional weeks.

Cocktail Shaker	\$35 - \$40	Salt Shaker (1)	\$25
Cologne Bottle	\$30	Salt Shaker (pr)	\$45
Cruet	\$30	Vase (under 10")	\$30 - \$35
Decanter	\$35 - \$45	Vinegar & Oil	\$30
Lavender Jar	\$25 - \$35	Water Bottle	\$35 - \$40

Ship to: **Kim Carlisle & Associates**
28220 Lamong Road, Dept. C
Sheridan, IN 46069
(317) 758-5767

kcarlisl@indy.net

*Make your motel reservations for the
NCC Convention now! See page 7.*

Mentoring Program 2003 NCC Convention

We can still use volunteers to act as Mentors for first-time attendees at this year's NCC Convention.

Mentors will help first-timers learn their way around the convention & show as well as around Cambridge.

It's a rewarding experience and a valuable service.

Contact Judy & Ken Rhoads at
kjrhoads@aol.com.

NDGA Establishes Memorial Fund to Preserve Glass

Editor's Note:

This item was sent to us by Sandra Bridwell-Walker, a member of the National Depression Glass Association. While it does not specifically deal with Cambridge Glass, I think we should all be committed to the idea of preserving glass for future generations. Therefore, I have decided to reprint this notice here.

Pam Ochs, a long-time member of the National Depression Glass Association, passed away on December 18, 2002. The NDGA has established a fund in her memory to preserve the glass she so dearly loved. The primary aim of the fund is to purchase glass in Pam's name for

the NDGA's National Glass Collection.

This special NDGA fund is a tax free entity, and will annually purchase and donate glass to the NDGA Glass Collection.

Contributions may be sent to:

NDGA Pam Ochs Fund
Box 8264
Wichita, Kansas
67208

Cambridge Glass Books *by National Cambridge Collectors, Inc.*

FOR ORDERING INFORMATION, SEE FOLLOWING PAGE

NCC Members receive a 10% discount on the books shown within the dotted line

1910 Near Cut 108-page reprint of 1910 catalog Paperback with Price Guide	14.95	Rosepoint(2000) by Mark Nye; comprehensive guide to Rosepoint showing blanks plus history of the line. 94 pages; Paperback with Price Guide	14.95
1930-34 Catalog Reprint 250 pages; Paperback with Price Guide	14.95	Rosepoint Price Guide (2000) (Included with Rosepoint book listed above. This price is for the Price Guide if purchased separately)	5.00
1930-34 Index (for above)	2.00		
1949-53 Catalog Reprint 300 pages; Paperback with Price Guide	14.95	<u>The following books do not offer discounts</u>	
1956-58 Catalog Reprint 160 pages; Paperback (no Price Guide)	12.95	Charleton Decorations by Michael & Lori Palmer Comprehensive, full-color guide to Charleton Hard-Cover (no Price Guide)	29.95
Caprice 200 pages; lists colors, decorations, repros, etc. Paperback with Price Guide	19.95	1903 Catalog Reprint by Harold & Judy Bennett 106 pages; Paperback (no Price Guide)	5.00
Colors in Cambridge Glass 128 pages; 60 color plates; fully indexed Hard-Cover with Price Guide	19.95	1927-29 Catalog Reprint by Bill & Phyllis Smith 66 pages; Paperback with Price Guide	9.95
Decorates 136 pages; Paperback (no Price Guide)	14.95	1940 Catalog Reprint 250 pages; loose pages are 3-hole punched to be placed in your binder. No Price Guide	25.00
Etchings, Volume 1 by Miami Valley Study Group 84 pages; Paperback (no Price Guide)	14.95	1940 Catalog Binder with Cambridge logo printed on front	5.00
Etchings, Non-Catalogued 70 pages; Paperback (no Price Guide)	12.95	Stemware by Mark Nye; shows all Cambridge stemware lines known at time of publication 167 pages; Paperback (no Price Guide)	19.95
Etchings: Blossom Time 26 pages; Paperback	7.95	Universal Dinnerware by Timothy J. Smith. Including Cambridge Art Pottery, Guernsey Earthenware, Oxford Pottery, Atlas Globe China 176 pages, color; paperback	29.95
Etchings: Candlelight 30 pages; Paperback	7.95	Welker - Volume I by Lynn & Mary Welker; reprints from a number of Cambridge Catalogs 120 pages; Paperback (no Price Guide)	10.00
Etchings: Chantilly 44 pages; Paperback	7.95	Welker - Volume II [color] by Lynn & Mary welker; 15 color plates showing choice pieces from their vast collection Spiral-bound (no Price Guide)	5.95
Etchings: Diane 53 pages; Paperback	7.95	Reflections by The Degenhart Paperweight & Glass Museum A history of Guernsey County glass production. 45 pages; Paperback	5.00
Etchings: Elaine 64 pages; Paperback	9.95		
Etchings: Portia 57 pages; Paperback	7.95		
Etchings: Wildflower 42 pages; Paperback	7.95		
Rock Crystal Engravings 94 pages; Paperback (no Price Guide)	14.95		

Elegant Glass Collectors cont'd.

on Gold Etchings. Are these Gold Etched or Encrusted? What is the difference?

Our Holiday party will be held on Sunday December 8th, 2002 at the home of Ken and Jane Filippini. The next formal meeting is tentatively scheduled for January 25th also at the home of Ken and Jane Filippini, where Ken will give a presentation on his beautiful Rosepoint collection.

-respectfully submitted
Gail Duchamp

Study Group #18 The Cambridge Triangles

The meeting of February 1, 2003 was held in Springfield, VA. We started off with Alex Citron handing out the new brochures for the NCC Museum. Treasurer Marsha Feldman collected dues. By the time you receive this Newsletter, the Annual Cambridge Auction will be done and hopefully you all got that special piece of glass that you were just dying to get.

Discussions in the meeting consisted of Fund Raising projects. We tossed around a few ideas and will formulate them more at the next meeting.

Ordering Information

NCC Members get a 10% discount on all the books within the dotted lines on page 17. There are no discounts on any other items.

SHIPPING & HANDLING RATES:

First item \$3.00
Each additional item \$1.00

SPECIAL SHIPPING:

- Scottie Dogs: \$10/pair for shipping
- Salt/Pepper Tops: \$3 shipping for any size order
- Jadite Tumblers: \$3 each, \$10 for a set of six
- Logo Pins: shipping included in price

OHIO RESIDENTS:
PLEASE ADD 6.5% SALES TAX

Payments by check or money order only.

Send orders to:

NATIONAL CAMBRIDGE COLLECTORS, INC.
PO BOX 416
CAMBRIDGE, OH 43725

*Be sure to include your complete shipping address and phone number.
Thanks!*

A presentation on Figural Flower Frogs was given by Barbara Burke and Shelley Cole Citron. Much information was shared about these flower frogs. When was the last time you saw a Blue Bell 13" Draped Lady Flower Frog with matching bowl and candlesticks? Never you say? Well, we have pictures of this sighting. Or, when was the last time you saw a Pink Mellon Boy Flower Frog? If you have never seen these things you now can, because we have pictures. If you want to see these and much more, e-mail me at cambridge3011@att.net and I'll send you the picture website. Also, a presentation on flower blocks was given by Bob Robinson. Bob gave us some tips on how to tell Cambridge flower blocks from those by other glass manufacturers.

Next meeting to be held April 5th in Reston. See you there!

Respectfully Submitted
Lisa Helm
Secretary

NEW NCC LOGO PINS

Only \$5.00
includes
shipping



Study Group #19 NE Ohio Cambridge Collectors

On Jan. 19, 2003 a new study group was started for Cambridge glass collectors. Four people attended in North Canton. It was decided to temporarily call study group #19, Northeast Ohio Cambridge Collectors.

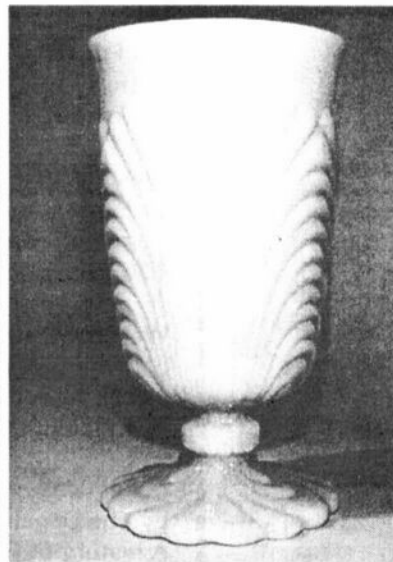
The group viewed the personal collection of the host, as well as items brought by the attendees. An A&J beater with a Cambridge bottom, a Cleo pattern decagon vase in dianthus, a Nearcut water jug in Marjorie with the Nearcut marking on the neck and an Inverted Strawberry crystal cake plate were a few of the items viewed. It was discussed that the group would try to meet bi-monthly.

The next meeting was set for Sat. March 22 at 2pm in Waynesburg, Ohio. Also discussed was possibly joining the Cambridge Cordials in a tour of Summit Glass in April.

If interested in this group, please contact us at Pfoutshi@aol.com. Please refer to "study group" or "Cambridge Glass" in your subject field or you may be deleted as spam. Hope to see you in March.

Respectfully submitted,
Ann McCoy

Caprice Jadite Tumblers NCC's 2002 Project



A Happenin' Color!
Cool, Retro Styling!

"Martha would want you to have these!"

\$20 each
Set of 6 for \$100
plus shipping charges of
\$3 each or \$10 for the set of 6

Made for the NCC by Mosser Glass
Marked on the bottom:
NCC 2002

DEALER DIRECTORY

When writing to these dealers, please enclose SASE

DAUGHERTY'S ANTIQUES
Jerry and Shirley

Antiques and Collectibles • Mostly Glass
www.daughertys-antiques.com

Shows & Mail Orders 2515 Cheshire North
(402) 423-7426 evenings Lincoln NE 68512

Milbra's Crystal Buy & Sell
Replacement and Matching Specifying in
Cambridge,
Milbra Long (817) 645-6066 Fostoria, Heisy
Emily Seate (817) 294-9837 and others.
PO Box 784
Cleburne TX 76033

E-mail: longseat@flash.net

THE GLASS URN
456 West Main Street, suite G
Mesa, AZ 85201 480-833-2702
480-838-5936

Mail Order Shows Open Shop

CAMBRIDGE, FOSTORIA, HEISEY, etc.

**THE DEGENHART PAPERWEIGHT
AND GLASS MUSEUM, INC.**

P.O. Box 186
Cambridge, OH 43725-0186

Intersection of US 22 & I-77
Phone 740-432-2626

THE GLASS CUPBOARD

P.O. Box 652
West End, North Carolina 27376

Marcia Ellis Cambridge Show
910-673-2884 and Mail Order

FINDER'S ANTIQUE HOUSE

3769 Highway 29 North
Danville, VA 24540

(434) 836 6782

Cambridge • Heisey • Duncan • Fostoria
Open Wed - Sat 11:00 to 5:00 (seasonal hours apply)

Monday thru Saturday 10 - 5:30 Sunday 12 - 5:30

Bogart's Antiques
BUY - SELL - APPRAISE - REFINISH
CANE & REED CHAIRS - CLOCK REPAIR

Jack & Sharon Bogart State Route 40
740-827-3514 shop 7527 East Pike
740-826-7410 home Norwich, OH 43767

BAKER FAMILY MUSEUM
805 CUMBERLAND ST.
CALDWELL, OHIO 43724

740-732-6410

Mon & Thurs 9-4; Fri - Sat 9-5
Call for Sunday Hours

CRYSTALLINE COLORS
Buy, Sell and Appreciate
Cambridge and other Elegant Glass

I Love Cambridge

Lynne R. Franks 216-661-7382
Ohio & western PA Antique Malls


CRYSTAL LADY
Thurs - Sat 11-5
1817 Vinton St. Omaha, NE 68108
Bill, Joann and Marcie Hagerty
Shop 402 341-0643 Home 402 391-6730

Specializing in Elegant Glass & Collectibles
www.crystalladyantiques.com

Storck's Antiques
Rick & Joyce

Antiques & Collectibles • Glass & Pottery
Specializing in Fenton, Imperial & Cambridge
Shows & Mail Orders • Storck1@aol.com
Greenfield, MN 55373 • (763) 477-6415

Mother Drucker's
Penny Drucker
Specializing in Elegant Glassware
Shows and Mail Order

 P.O. Box 50261 Phone: 949-551-5529
Irvine, CA 92619 888-MDRUCKER
Website: <http://motherdruckers.com>

Deborah Maggard, Antiques

Specializing in Cambridge Glass,
American Hand-Made Glass & Victorian Art Glass

Please stop and see our extensive collection of
Cambridge Glass at Riverfront Antique Mall in
New Philadelphia, Ohio (I-77, exit 81)
Booths 805 and 812
You won't be disappointed.

We buy one piece or entire collections.
Please contact me at 440-247-5632
and leave a message, or e-mail at
debmaggard@worldnet.att.net

P.O. Box 211
Chagrin Falls, OH 44022

JUDY'S ANTIQUES
Judy Bennett
422 S. Ninth Street (corner of Jefferson)
Cambridge, Ohio 43725

Business (740) 432-5855
Residence (740) 432-3045

CAMBRIDGE GLASS MY SPECIALTY


GREEN ACRES FARM
2678 Hazelton Etna Rd.
Pataskala, OH 43062
(State Route 310 North)

Sat & Sun 1-7 pm 740-927-1882
Antiques, Crystal Glass & Collectibles

THE JONES GROUP
Cindy Jones
Buy and Sell Cambridge Glass

650 Riverside Drive
Sleepy Hollow, NY 10591

914-631-1656 or E-mail Caprice0@aol.com

 **Mary Jane's Antiques**
Early American Pattern Glass
Depression Era Items

2653 Burgener Drive 217-422-5453
Decatur, IL 62521 mjhumes@aol.com

ALADDIN LAMP BOOKS
Free List
Figurine Lamps Wanted
Bill & Treva Courter

3935 Kelley Rd. Kevil, KY 42053
Phone 270-488-2116 FAX 2700-488 2055

GATEWAY ANTIQUE MALL, INC.
JUST NW OF MINNEAPOLIS-ST. PAUL, MN
Next to Super 8 in Rogers, MN
(I 94/I01 intersection)

85 Dealers • 7 days; 10 - 6 • 612-428-8286
ELAINE STORCK, OWNER/DIRECTOR

ISAACS ANTIQUES
(740) 826-4015

See our booths in Penny Court Mall in
Cambridge and at White Pillars Antique Mall
(Route 40, one mile west of
I-70 Norwich, OH • Exit #164)

PENNY COURT MALL
637 Wheeling Avenue
Cambridge, Ohio

100 Booths 15,000 sq ft

HOURS: Daily 10-6 Sunday Noon-5
Closed: Easter, Thanksgiving, Christmas

Call for other holiday hours 740-432-4369

MARGARET LANE ANTIQUES

2 E. Main St. New Concord, OH 43762
Lynn Welker (740) 826-7414

Cambridge Glass Matching Service
Hours: Mon-Fri 10-12 AM, 1-5 PM
or by appointment

DEXTER CITY ANTIQUE MALL

P.O. Box 70 Dexter City, Ohio 45727
(740) 783-5921

Located on Ohio Route 821
between exits 16 & 25 of I-77
Just 30 minutes south of Cambridge, OH

**Jeannie Moore:
The Crystal Ball's
Advertising Manager**

Hi, my name is Jeannie Moore, and I have been asked, arm twisted, pleaded with, and very nicely asked to join in and help with the Crystal Ball, as Advertising Manager. Someone thought I would be pretty good at it. I took some time thinking about it and decided sure, why not. NCC could use more people west of the Mississippi involved not only with the Crystal Ball but in NCC.

Once I agreed, I was asked to write an article about myself, AND send a picture. So here goes.

You already know my name, so that takes care of that part. I'm married with one son and dog. We have lived in Texas for nearly 19 years, with

WANTS

This is the final month of our test program for free "Want Ads." The Board of Directors will evaluate the benefit of continuing the program. Your input is encouraged. Thank you.

Wanted:

Cover to 3400/52 butter dish,
Stopper for 3400/79 oil bottle,
any blank of Gloria stemware
(all clear)
E-mail: rrietz@earthlink.net

home being Michigan. I know Texas is a pretty big state but y'all might have heard of Dallas. We live in a northern suburb of Dallas, in a town called Flower Mound.

It all started with My Mother-In-Law:

Helen (Loach) Moore that's the Mother-In-Law, her Mother worked in the Cambridge Glass Factory. Grandma worked on Rose Point and Helen had some pieces Grandma worked on. You may have guessed by now, we became like everyone else. We took it a step further and started collecting. It has been fun and exciting ever since.

Some of you have heard about my Cambridge Ball Jug Collection. Along with a friend, I prepared displays for two shows. I also collect Cambridge Georgian tumblers. I am the proud owner of about 75 jugs and over a



I'm like everyone else in the club; Crazy for Cambridge Glass (Hummm that sounds like it should go on a t-shirt).

I have been a member of NCC for several years; I have been to the convention for five years, and seriously Collecting Cambridge Glass for about fifteen years.

In my spare time: I have a full time job, active in our Home Owner's Association, and belong to a neighborhood stitch and craft group.

Volunteers are needed for the Convention:

Manning the Registration Table

Help with Banquet Decorations

Running Errands

See Page 7 for Details... Thanks!

**NATIONAL CAMBRIDGE COLLECTORS, INC.
P.O. BOX 416
CAMBRIDGE OH 43725-0416**

<http://www.cambridgeglass.org>
E-mail: NCCcrystalball@aol.com

**FIRST CLASS MAIL
US POSTAGE
PAID
PERMIT No. 3
CUMBERLAND OH 43732**

FIRST CLASS MAIL

*Membership Renewal Notice:
If the date above your name
is 03-03, this is your last issue,
and your NCC Membership has
expired.
Please renew today.*