

# Cambridge Crystal Ball



Published monthly by National Cambridge Collectors, Inc.  
to encourage and report the discovery of the elegant and boundless product of the  
Cambridge Glass Company of Cambridge, Ohio

Issue No. 374

June, 2004

See Crystal Ball photos on-line, in full color at [www.crystalballphotos.org](http://www.crystalballphotos.org) (password on page 5)

## and we're off... at the museum in 2004

by Cindy Arent

The museum has been open for eight weeks now, and we're hoping that this year will be even better than 2003. There have been many visitors already including one from Berlin, Germany who thought that Cambridge Glass was "Beautiful". There are several changes this year in addition to the feature display rooms.

The Edna McManus Education Center is still a work in progress. The displays are in place, but many details still need to be added. Sid Garrett, who worked in the Engraving Department at the Cambridge Glass Company for several years, came to the museum to check the authenticity of the engraving display and we passed the test. Sid was eager to cut some glass but we didn't have the dripping water necessary for the cutting process!

The museum gift shop is a bit larger this year. Charles Upton has labeled each item with a descriptive tag which will make the tracking of gift shop sales easier to record. A new book shelf has been added on top of

the cases to allow for better display of the books for sale.

Several different types of recognizable molds have been moved to the center from the storage building. Carl Beynon will be contacting Mosser Glass about the proper procedure for cleaning and preserving the molds for display. These molds will be featured on a specially designed unit and will have descriptions detailing the procedure used for each type.

The reproduction pieces have been placed in the new showcases. There is still a need for Imperial reproduction items. If you have any of these pieces and would be willing to donate or loan them to the museum, please send a list and we will contact you.

The Education Center will be in partial operation by convention. On Thursday afternoon (see convention schedule for time), we will be showing a video of Bill Smith describing the Cambridge Glass Company factory. Mike Arent and Bill Smith went to the plant on July

9, 1990, shortly before it was demolished and filmed Bill telling about the factory operations from just outside the worker's entrance, through the Hot Metal Department, and ending in what was the Selecting Department. Bill worked at the company for a short time as a young man and was able to give very good descriptions of each department. This video will be a wonderful addition to the body of knowledge that NCC has about the factory and the way it worked. Another aerial video of the plant, taken by Mike, shows just how massive the building actually was. For those of you who never saw the factory, these tapes are a "must see".

In order to promote the museum, several activities were scheduled. On April 24, Sharon Miller and I attended the Ohio Association of Historical Societies and Museums regional meeting. We joined sessions on "Creating Living History Programs" and "Presenting Your Stories that Engage the Public; Computers, Videos, and Distance Learning".

Convention is just around the corner and we look forward to meeting you at the museum!

*Inside... Convention 2004*

# National Cambridge Collectors, Inc.

PO Box 416  
Cambridge, OH 43725-0416

*Please notify us immediately of any address change.*

## Contacts:

President Rick Jones	(914) 631-1656
Secretary Larry Everett	(937) 675-6491
Crystal Ball Editor Alex Citron	(434) 296-2531
NCC Museum (phone)	(740) 432-4245
(fax)	(740) 439-9223

## Membership

Membership is available for individuals at \$20.00 per year, and an additional \$3.00 for associate members (12 years of age and older, residing in the same household). All members have voting rights, but only one issue of The Crystal Ball will be mailed to each member household.

Multi-year memberships are available:  
2 years for \$38.00; 3 years for \$56.00.

## 2003-2004

### OFFICERS AND COMMITTEE CHAIRS

President	Richard D. Jones
Vice-President	Tarzan Deel, Jr.
Secretary	Larry Everett
Treasurer	Dennis Snyder
Sergeant-at-Arms	Charles Upton
-----	
Acquisitions	Lynn Welker
Archives	Mark A. Nye
Budget & Finance	Mike Strebler
By-Laws	Alex Citron
Crystal Ball	Alex Citron
Endowment	George Stamper
Facilities	Carl Beynon
	Joe Miller
Grants & Fundraising	Sharon Miller
Long-Range Planning	Doug Ingraham
Member Services	George Stamper
Membership - Chairman	Ken Filippini
Membership - Operations	Jeff Ross
	Linda Atkins
Membership - Development	Freeman Moore
Museum	Cindy Arent
Nominating	Richard D. Jones
Program	David Ray
Projects	Bill Hagerty
Publications	Mark A. Nye
Publicity	Lorraine Weinman
Study Group Advisor	Judy Rhoads
Technology/Webmaster	Linda Roberts
2004 Auction	Dorothy Rieker
	Squeek Rieker
	Lynn Welker
	Shelley Cole
2004 Convention	Mary Beth Hackett
2004 Glass Show & Sale	Joy McFadden
	Larry Everett
	Susan Everett
2004 Glass Dash	

## Board of Directors:

Cindy Arent; Tarzan Deel, Jr.; Larry Everett;  
Ken Filippini; Rick Jones; Sharon Miller;  
Dennis Snyder; George Stamper; Mike Strebler;  
Charles Upton; Lorraine Weinman; Lynn Welker

# Cambridge Crystal Ball

The official publication of National Cambridge Collectors, Inc., a non-profit corporation with tax-exempt status. Published monthly for the benefit of its members. All rights reserved; reproduction in whole or part without written permission of National Cambridge Collectors, Inc., and the author is prohibited.

## Executive Editor

Alex P. Citron

## Research Editor

Les Hansen

## Advertising Manager

Jeannie Moore

## Circulation

Sharon & Joe Miller

## Advertising Rates

### Display Advertising (camera-ready):

Full Page	\$50.00
3/4 Page	\$40.00
1/2 Page	\$30.00
1/4 Page	\$20.00
1/8 Page	\$15.00

(Add \$5.00 for each photograph)

### Classified Advertising:

10 cents per word; \$2.00 minimum  
(Abbreviations and initials count as words)

### Dealer Directory:

\$24.00 for twelve-month contract  
Text limited by standard box size (see page 19)  
Includes FREE listing on NCC website

- Payment in full must be received before advertising will be run.
- Cambridge Crystal Ball and National Cambridge Collectors, Inc., assumes no responsibility for items advertised and will not be responsible for errors in price, description or other information.
- Advertising copy may be submitted to us by e-mail or regular mail as follows:

Ad copy may be sent by e-mail to [NCCcrystalball@aol.com](mailto:NCCcrystalball@aol.com), and must be sent by the 10th of the month preceding publication. Ad will not be run until your check has been received at our PO Box.

Ad copy may be sent by regular mail, along with your check, to our PO Box. Copy sent this way must arrive at our PO Box by the 1st of the month preceding publication.

## Submissions to

## The Crystal Ball

By mail: P.O. Box 416 Cambridge, OH 43725

E-mail: [NCCcrystalball@aol.com](mailto:NCCcrystalball@aol.com)

(This E-mail address is for newsletter business, inquiries and submissions only)

## Deadlines:

Ad copy by e-mail: 10th of preceding month  
Ad copy by regular mail: 1st of preceding month  
Articles, study group reports, etc: 10th of preceding month

## MEMBERS ONLY

Visit the "Members Only" section of the NCC's website at [cambridgeglass.org/NCCmembers](http://cambridgeglass.org/NCCmembers)

Features available only to NCC Members include:

*Reprints of Research Articles*

*Minutes of Board Meetings*

User name: NCC Password: TriangleC



## *President's Message:*

# Electronic Progress

It doesn't seem so long ago (maybe 1996?) that I was polling members at Quarterly Meetings about who was on the Internet. It started out at less than 25% of the members and seemed to grow by a 10-15% clip at each subsequent meeting.

This trend blossomed when eBay emerged as a huge transactional factor in how glass was bought and sold. Just three years ago, I wrote "Bloom Off The Rose?" ... about the internet usurping much of the perceived fun of going to glass shows.

Now, Internet coverage nationally tops cable TV (around 80% of the U.S.). It is a huge transformation in how information gets communicated.

A few years ago, we predicted a time when getting the Crystal Ball electronically might not only be a realistic option, it might be the norm. Well, that time is rapidly approaching.

Two months ago, our Editor Alex Citron did an "alpha test" of the first e-newsletter and sent it to a small sample of the Board, committee chairs and some of our electronically-savvy members. While this was never intended to be final production quality, it was geared to get reaction as to whether this form of intra-club communication was feasible for the future.

The response from this first core group was overwhelmingly positive. Many saw it as the clear cut future of the club. The benefits were enormous: More content, more pictures, color, better reproduction, potential interactivity via direct links to other information or advertising sites, immediacy of delivery, and on and on. As we assessed the reaction and tried to dovetail that with the current membership's position, we began to

see that two choices might be possible: for those who wanted an electronic newsletter we could be looking at a switch over in a non-too-distant future, and for those without internet access, or those simply preferred "hard copy," the printed and mailed version of the Crystal Ball would absolutely remain an option.

Should we move to this dual system, it would be a very big, and complicated, step. It would involve taking our member database to a much more sophisticated data collection and maintenance position. While many "publishing companies" have taken steps like this in recent years, they all have either internal or outsourced fulfillment departments that handle these responsibilities. Last I checked, we were still staffed with volunteers with very little money for "outsourcing."

That said, this is an inevitable move. We have begun to create a strategic plan for the future of membership database administration that will allow us to capture more email addresses and specific member preferences. The timetable for this initiative is still uncertain, but it holds great promise.

At the same time, our Treasurer Dennis Snyder has been looking at ways for us to handle many other transactions electronically, from book sales to membership renewals. This exploratory began with a simple concept - "can the club take credit cards?" (the initial answer of which was "no, not efficiently") and has morphed into something much smarter and more sophisticated.

Dennis is demo-ing an eBay store ... kind of a virtual storefront where all or most of our resale or transactional items would be available and then via a PayPal-like system (or perhaps

PayPal itself) the customer could close the loop - buying the item and charging it in one fell swoop.

As said, neither of these initiatives "are ready for primetime," but they are enticingly close. They are great steps forward for the club. They will speed communications, streamline the ordering and processing procedures, reduce printing and postage costs (in the face of ever increasing prices) and offer members more services and content. There's a lot to like about this.

If you would like to see a copy of the e-newsletter, drop me an email at Caprice0@aol.com. I'll do my best to get a copy forwarded to you, but frankly, if response is overwhelming, I may not be able to get to everyone. Thanks for your understanding.

P.S. Some people were confused by our communications on the Scottie Dog promotion. No, these dark blue ones do not look like the picture on the cover of the May CB, that's a creative rendering. They look just like the red and light blue ones we have marketed before. And, we are not really calling them a "limited edition" because if this promotion is as exceedingly successful as we hope it is (the museum needs it!) there remains a remote possibility that we might do another turn. But please, buy them because the museum would love the support, or you would just love a great pair of Scotties. Don't buy them just for a "limited edition" appeal - that's not the real story!

# 2004 Convention Programs



**David Ray (Candleabra and their Parts)** graduated from The Ohio State University in 1996 with a Master of Arts in Mathematics and B.S. Math Education. Currently he is employed with Westerville City Schools in Westerville, OH where he teaches Algebra 2 and Integrated Math. He is a member of the Miami Valley Study Group and the Cambridge Wildflowers.

While attending The Ohio State University in the fall of 1988, David received a telephone call from his mother stating they had purchased the most beautiful piece of glass at the Meadow's Flea Market in Washington, PA. The piece was a Moonlight Caprice #62 bowl. Well, as they say, the rest is history. Being a college student on a very tight budget, he could not afford to collect blue Caprice, so he started collecting crystal Caprice. After nearly sixteen years of collecting, the project is nearly finished. There still remain a few illusive pieces of crystal Caprice he has never had the opportunity to purchase. And after two conventions had passed and nothing new was added to the collection, he decided to begin a new collection(s). The two new collections were Cambridge swans ( the style 1 pattern ) and crystal nude stems. Now, after five years, these collections are nearly complete. What will be next?

---

---

## Hello Cambridge Convention First-Timers

by Judy & Ken Rhoads, Chairs of the Mentoring Program

Welcome! Welcome! We are so glad you have decided to become a part of the Cambridge family. It is always exciting to learn and talk about beautiful glass with those who share your collecting passion. You will find Cambridge glass collectors to be some of the friendliest people in the world.

When you arrive in Cambridge, we will be ready for you. There will be many different activities: seminars, meetings, a glass show, a flea market, a silent auction, a glass identification session, a "bring and brag" session of exciting Cambridge finds, a wonderful new museum, and, of course, food. It is a wonderful feast of Cambridge.

As a First-Timer, you may have questions or just may be wondering how you can do it all. We can help! We encourage you to attend the First-Timers' Orientation on Friday, June 25, at 9:30 AM at Pritchard Laughlin Convention Center in the Conference Room. At that time, we hope we can

get acquainted, answer your questions, and introduce you to Mentors. Mentors are volunteer "experienced-timers" who are making themselves especially available to you to help you have a great convention experience. They can give you good information and hot tips about what sessions are "musts" or what to wear to certain events. They can commiserate with you about "the piece of glass that got away", let you know how early you need to get up to find the best treasures at the Glass Dash, celebrate with you about a great find, or tell you the best place in town to get ice cream.

We want you to be comfortable at convention and to get the most you can out of it. We look forward to meeting you. See you in June!

**Don't delay  
another minute  
REGISTER TODAY**

**See page 13**

## THE LINE

### The New System of Lining Up for the Glass Show

This year, a new system has been instituted to ease our entry into the Glass Show & Sale on opening day, Friday, June 26th.

No longer will hopeful buyers have to line up at six in the morning and spend hours and hours waiting in line for the opening of the doors at 2:00.

Two years ago, the fire department in Cambridge told the management of the convention center that they'd prefer it if we didn't line up a bunch of chairs all day in the Galleria. Last year, with the chairs largely absent, people milled around, mostly annoyed that there was nowhere to sit.

This year, problem solved - we hope. We will be using a system of numbered tickets instead of a line. Here's how it will work:

On Friday morning at exactly 8:00 a.m., convention volunteers will begin handing out numbered tickets at The Pritchard Laughlin Civic Center. The first ticket will be #1, the next

continued on page 12

# 2004 Convention Programs



**Howard Seufer, Convention Speaker**, has 29 years experience at the Fenton Art Glass Company as an Engineer and Quality Control Manager. He currently lives near Williamstown, West Virginia. As Convention Speaker, he will present a program on glass quality and manufacturing techniques. His presentation will require the audience's assistance, so come prepared to have fun, learn a lot and work a little. Mr. Seufer came to our attention through members of the National Imperial Glass Collectors Society when he presented a program at their convention in 2003. Here is an excerpt by Laura Murphy, from their newsletter regarding Mr. Seufer's presentation, "I'm sure we have all been to dinners where the speaker was not all we had hoped he would be. Well, that was definitely NOT the case Saturday night. Mr. Seufer was more than entertaining, and he presented the program so well, and with so much fun, that no one could have been bored...Those of us who attended the Banquet now have a new appreciation of hand made glassware. Mr. Seufer showed us how to look at the glassware from the eyes of the craftsman who makes it. We no longer think of flaws or defects, NOW we know they are FEATURES!" Please join us Saturday evening for Mr. Seufer's presentation to the National Cambridge Collectors. It will be well worth your time.



**The Miami Valley (OH) Study Group** will present "Cambridge Glass and All That Jazz" on Saturday afternoon at 3:00. Keeping in mind that 'all glass was once new' the program will be about *newly* introduced items from Cambridge glass during the jazz era. The program will begin with the year 1925....

Fun loving, enthusiastic and dedicated. This fairly well describes members of the Miami Valley Study Group.

The Miami Valley Study Group, No.13, (MVSG) is an extension of the National Cambridge Collectors Club, Inc. We currently have thirty-nine members. Several members of the MVSG were members of the original Hokey-Pokey Study Group that formed prior to the founding of NCC. After that group disbanded in the early '70's, the MVSG was formed.

Over the years the MVSG has had members serve on the NCC Board of Directors. Currently two from our group are serving on the Board. Other club participation on the national level came from members who have contributed many articles for the Crystal Ball, given presentations at convention and quarterly meetings, chaired committees, chaired the national convention, and set up special displays of Cambridge glass. We have good representation at the meetings, and have generally been available for working in the museum and the museum grounds. Some of us got our tetanus shots and helped clean up after the flood!

Besides our monthly programs, the group has put on special programs. We were guests at the St. Paris (Ohio) Antique Collectors Club and presented an overview of Near Cut, the Cambridge Colors, Flower Frogs and Other Figurals, Cuttings and Etchings. We had a month-long display in the Springfield Art Museum and we were involved in a six-month display at the Boonshoft Museum of Discovery; *Earth, Sand, and Fire*, a display which showed the history of Ohio pottery and glass. Cambridge glass was our anchor display. During that six-month period, the group also gave several educational seminars on Cambridge glass as well as on Heisey candlesticks. Recently several members were involved in presentations given at the Carillon Historical Park in Dayton.

See the Crystal Ball photos in color, on-line at:  
[www.crystalballphotos.org](http://www.crystalballphotos.org)  
password: rainbow

# That Touch of Elegance

by Georgia G. Otten

*This article is being reprinted because of an editorial error in its previous publication. My apologies to Ms. Otten and her readers. -- The Editor*

I would ask that each of you sit down now and regress...one of my favorite pastimes! I would like you to consider times in your life when you wanted to do something really elegant and how the idea of "something elegant" can change over a period of time. I suppose this will be mostly directed at the lady readers but I certainly do not mean to infer that men cannot or do not think of things elegant! Some do, some don't. Generally speaking, most people understand elegance. Glass collectors surely do! Now go back in time a bit.....

You are somewhere in your twenties. You have your first apartment. Your first job is working out well and you have set aside some money for entertaining. Of course your apartment is small, your good table is the old one that you found in your aunt's basement, but it is clean and a nice tablecloth elevates its status to a "dining" table. Your guest will be the person in your life you would like most to impress. You have the dishes and the no-fail family recipe. You need that one touch of elegance to set the mood. The candlesticks! A nice pair of Cambridge No. 3, 10" Victorian candlesticks. Modest, but elegant....they were Mother's and she was always so proud to use them and so are you. All is ready! No one will escape this evening without a feeling of elegance and importance!

Life has been good. You are now in your thirties. That first apartment and the aunt's table are only memories. You have a house with a real dining area! This calls for an invitation to your favorite couple to share the evening meal with you and that very special person who is still in your life! It even means you will be "dressing for dinner." A definite time to show off the good life you are experiencing. You

now have a drop leaf dining room table and of course you have four matching chairs. Perhaps you will use that wonderful damask tablecloth. You don't even mind ironing it. Your china is out and the table is set. The menu is planned in several courses but something is missing. Yes, that touch of elegance...the candlesticks! The dining area is still small but you have saved some hard-earned money and acquired a most elegant item to dress up your table. You have acquired a Cambridge No. 1358 3 Holder with bobeches and prisms! Oh those prisms.....absolutely dripping with elegance! The evening will simply be too gorgeous!

The twenties and thirties surely went by quickly. You are now in your forties and you still find entertaining in your home a special time for friends. Life has brought you more than expected and your new home boasts not only a large dining room but also you have a great room! So many opportunities. Your new dining room furniture is polished to perfection, four boards have been added to the table and there are eight upholstered chairs in place. The menu has been chosen, the food catered, and it will be served to your guests. All is ready.....oh yes....don't forget that touch of elegance! Your good fortune has allowed you to acquire many new pieces of Cambridge, for you are now a collector! What will grace your table this

evening? How lovely for you and for your guests to enjoy the meal in the twinkling candlelight provided by a pair of No. 17 Cambridge Arms arrangements... complete with all bobeches and an added peg vases for your choice of flowers! Wouldn't you consider that elegant?

The years go on, life styles become a bit more relaxed. Collecting Cambridge continues. Entertaining becomes a bit more casual. Friends carry in food to be shared by the group or pizza is ordered. You now find yourself in the great room. There is no place to eat at the dining room table for it is covered with recent purchases of Cambridge glass. You have rediscovered the table that belonged to your aunt and now have it in the great room. Your friends have arrived and just before opening that pizza, you remember you would like to continue having that touch of elegance. So you run from the room and bring in your latest acquisition, a pair Cambridge Mount Vernon No. 38 13 1/2" candelabrum in Heatherbloom! It makes no difference that there is no tablecloth or that the sticks are too big for your aunt's table. It's your Cambridge!..... Can't you just picture it? No matter the time, no matter the room, there is always acceptance for that touch of elegance! And the name "Cambridge" is synonymous with elegance!

## **Reminder...**

***Please donate glass to the Silent Auction  
Support the NCC and the  
National Museum of Cambridge Glass***

***Cambridge Glass in excellent condition only  
Valued at \$25 or more***

*Bring donations to the Convention registration table on  
Friday, June 25th, between 8:00 am and 1:00 pm*

# The President's Challenge:

## The 2004 NCC Convention Silent Auction

President Rick Jones has donated a piece of Cambridge Glass worth at least \$100 to the Silent Auction, and has raised a challenge to all NCC members to follow suit to make this year's Silent Auction the best on record.

### Will YOU take the President's Challenge?

E-mail us and let us know what item you'd like to donate to the Silent Auction. Donated items must be Cambridge Glass, Cambridge Glass factory, or Cambridge-associated ephemera, and be of at least \$25 value. Only those items of \$100 or higher value will qualify the donor as a President's Challenge Contributor. Auction proceeds will benefit National Cambridge Collectors, Inc.

Please send an email listing your donation(s) [indicate item/s and value/s] to: [slunicorn@aol.com](mailto:slunicorn@aol.com)

- Bring your donated item to the Registration Desk at the 2004 NCC Convention on Friday, June 25<sup>th</sup> between 8:00 a.m. – 1:00 p.m.
- Open bidding on auctioned items Friday afternoon at the Show & Sale (bidding will close at 5:45 pm)
- Winning bidders will be announced Friday evening, June 25<sup>th</sup> (winners will pick up items after Annual Meeting)

#### President's Challenge Donations to date include:

Lt Emerald Draped Lady Flower Frog (Rick & Cindy Jones); Nude Stem Cocktail, Amber (Alex Citron & Shelley Cole); Nude Stem Claret, Carmen (Ken & Jane Filippini); "Shmoo" Salt & Pepper, etched Rosepoint (Doug Ingraham); Forest Green Rumpot Decanter (Bill & Yvonne Dufft); Nude Stem Cocktail, Mandarin Gold/CT stem and Nude Stem Cocktail, Mandarin Gold/Crystal (Van & Ruth Smith); #1238 CT Vase, Charleton decoration (Cindy & Mike Arent); Gadroon Urn Vase, Silver overlay (Columbus Wildflowers); CT Nude Comport, Charleton decoration (Barbara Wyrick); CT 8.5" Swan, Charleton decoration (Jim & Nancy Finley); #3112 Cordial, Royal Blue bowl & foot, crystal stem (Frank & Vickie Wollenhaupt); Rosepoint 10.5" bowl, beaded foot (Squeek & Dorothy Rieker); 4-piece Mayo set, underplate, 2 spoons, etched Rosepoint (Bob & Karen Gallagher); #628 Candlestick with arm, dishes and Blue Jay peg (Dwayne & Bonnie Lippy)

### Study Group Reports:

#### Study Group #15 North Texas Cambridge Study Group

The North Texas Cambridge Collectors decided to combine the February and March meetings into one meeting. This was held as luncheon on the Saturday that the Metroplex Glass Show was in Grapevine. Eight members and visitors were present for a low-carb lunch. Other members were tied up at the show with their own booths. Another couple missed the meeting because they were on vacation in Florida.

We discussed assorted items seen at the show. As usual, we managed to have a few Show and Tell items including: a crystal gadroon 6" (3500/91) square tray; an amethyst Farber Bros juice jug

(#630), an amethyst (3400/144) cigarette holder/ashtray/place-card holder, and an unusual moonlight blue caprice 7" footed basket (a blend of #132 and #134)

The April meeting will be at Gerri Cook's on the topic of "Trick and Treat" – bring your good bargains and what you got (mis)took on. The May meeting will be at the Pierce's and focus on cream and sugar sets.

Submitted by Gwenell Pierce

*Joint  
Study Group Meeting  
at NCC Convention...  
see page 12  
for details*

#### Study Group #13 Miami Valley Study Group

The meeting was called to order at 7:00 by Vice-President Ron Hufford. Those present were Frank and Vicki Wollenhaupt, John and Helen Wilt, Judy Rhoads, Ron and Norma Hufford. It was moved and seconded to dispense with the reading of the minutes since they were sent to all members. The Treasurer's report showed a balance of \$383.54.

#### OLD BUSINESS

The program for the convention was discussed. Frank gave a report on the 20-30 year period in the absence of Larry Everett, who had done the research. Georgia and Vicki reported on their parts.

continued on page 9

# Events:

If you know about any upcoming glass shows or other glass events, please pass the word on to us at least six to eight weeks before the show dates. These listings are free of charge.

## Mark Your Calendar



- > NCC Convention  
Thursday, June 24 thru  
Saturday, June 26
- > Quarterly Meeting  
Saturday, August 16  
Luncheon
- > Quarterly Meeting  
Saturday, November 6  
Dinner &  
Educational Program



## Upcoming Glass Shows, Etc.

### June 3-6:

Imperial Glass Collectors Society  
28th Annual Convention & Sale  
St. Clairsville, OH  
E-mail: info@nigcs.org

### June 11-13:

Fostoria Glass Society  
Convention & Sale  
Moundsville, WV  
Call: (304) 845-9188  
E-mail: cj\_glass@comcast.net

### June 16-19:

Heisey Show & Display  
OSUN/COTC Campus  
Newark, OH  
Call: (740) 345-2932

### August 7-8:

The Great Northeast Show  
White Plains, NY  
Call: (330) 270-3348  
www.glassshow.com

### September 17-19:

Sanlando DG Show  
Sanford, FL  
Call: (407) 298-3355  
E-mail: milliesglass@webtv.net

### November 6-7:

Michigan DG Society Show  
Dearborn, MI  
Info at: www.mdgs.freepagez.com

## • MORGANTOWN • FOSTORIA • FRY •

NEW MARTINSVILLE • PADEN CITY • FENTON

## 29th Annual Duncan Miller Convention Glass Show & Sale

*Sponsored By*

*The National Duncan Glass Society*

July 24-25, 2004 • 10:00 am to 4:00 pm

**Alpine Club**

735 Jefferson Avenue, Washington, PA  
I-70 Exit 17, 1/2 mile

Admission \$4.00

\$.50 discount with this ad

*Auction: Saturday, July 24 at 5:30 pm*

*Thistlecrest Auction House • Rt 40 E.*

**For Information, Call 724-225-9950**

*Lunch sponsored by Duncan Club ••• Benefits the Duncan Museum*

CAMBRIDGE • TIFFIN • DUNCAN MILLER

## • IMPERIAL • OLD PRESSED GLASS •



# Your Guide to Cambridge...

*especially useful if you're coming to Convention, but interesting even if you're not... and, by the way, why aren't you?*

**Lodging:** All the major motels are located at Exit 178 off I-70.

**Food:** There are several restaurants (buffet, sit-down and fast-food) in the Exit 178 area. There are also a few restaurants in downtown Cambridge. The major grocery stores are Riesbeck's on Rte 40 east of downtown, and Kroger, Wal-Mart and K-Mart in the Exit 178 area. There are a number of 24-hour convenience stores around Cambridge; K-Mart and Wal-Mart are also open 24 hours a day.

**Antiques:** There are several good antique shops in downtown Cambridge. In addition, much Cambridge Glass is usually found at Margaret Lane Antiques in nearby New Concord, at Riverfront in New Philadelphia and at the Dexter City Mall in Dexter City.

**Pritchard Laughlin Civic Center:** To reach the Civic Center from the motels, take I-70 eastbound to exit 176. At the end of the long exit ramp, turn right at the light. The Civic Center is 1/2 mile ahead on your left.

## Miami Valley (from page 7)

### NEW BUSINESS

We welcomed new members, father and daughter, Lester and Mary Jo Dupree. Frank moved we adjourn. It was seconded by Will.

### SHOW AND TELL

3500/69 amber 6 1/2" 3-part relish with Farber chrome base,  
3900/126 crystal relish Rosepoint etch,  
3400/95 4 1/2" puff box, emerald green,  
P500 candlestick Chantilly etch,  
3500/67 10" 5 piece relish; silver tray,  
1309 5" globe vase with Chantilly etch,  
430 cigarette box etch 704, Peachblo,  
Stradivari/Regency cocktail, odd green,  
67 candleholder, Ebon.

Norma Hufford presented the program on Nearcut Inverted Feather.

Respectfully Submitted,  
Norma Hufford, Secretary

**NCC Museum:** The National Museum of Cambridge Glass is located at 136 South 9th Street, in downtown Cambridge. From the motels, go north on route 209 until it ends at the courthouse. Turn right onto Wheeling Avenue, then right on 9th Street. The museum is 1 block up on the right; parking is just beyond the museum building.

**Bennett Museum:** This privately owned museum of Cambridge Glass is located at 812 Jefferson Avenue. From the motels, go north on Route 209. Turn left onto Jefferson Avenue just after you pass the police station (at the foot of the viaduct). The museum is 1 block ahead on your right. Call ahead for hours.

**Boyd Glass Company:** From the motels, take Route 209 north to the courthouse. Turn right onto Wheeling Avenue, then right on 11th Street (at the Elks Building). Stay on 11th Street as it turns and becomes Morton Avenue. The Boyd factory is ahead on your left at 1203 Morton Avenue. The parking lot is just beyond the building.

**Glass Dash:** The Beech Grove Family Center is the location of the NCC's Glass Dash. From the motels, go south on Route 209 across I-70 and past Wal-Mart. The Center is just a short distance ahead on your right. Signs are posted.

**Mosser Glass Company:** From the motels, take Route 209 north to the courthouse. Turn right on Wheeling Avenue, then bear left onto route 22 (Cadiz Road). The factory is on your left just before you get to I-77.

**Baker Family Museum:** From the motels, take I-70 east to I-77 south to Exit 25, Caldwell. Turn left onto Route 78, go to the second traffic light and turn left onto Route 821. Follow Route 821 through town, past the Post Office and Gateway Market. The road dead-ends at Frazier Road; turn right and look for a grey and white, 3-story building. The museum is in that building.

*There are lots of interesting sights in the Cambridge area, including Salt Fork State Park, The Wilds, the Glenn House, the Kennedy Stone House Museum, the Zanesville Y-bridge and many others. Most area motels have an assortment of informational brochures.*

## Study Group #17 The Columbus Wildflowers

On Thursday, April 2, 2004, the Wildflowers met at the home of David Ray at 7:00 pm. Refreshments of relish and fruit trays with cheese and salami, and homemade brownies with ice cream and whipped cream were served.

Linda Roberts called a quick meeting to order but we had very little Old or New Business other than to discuss whether to try and put together a glass exhibit at the Ohio State Fair, but time and security issues influenced our decision not to.

David Ray presented a program on "Little Things." He had a large table set up with a variety of small items made by Cambridge, and by the time study group members added items they had brought for the program, the table was full. It

was surprising just how many "small items" Cambridge actually produced. David began by saying that many of the small items are the ones that are not marked, and so harder to identify, and in looking at them, only a few were actually functional. We discussed whether in the later days, the last 25 years of the company, it was possible they moved more toward producing decorator glass, show pieces to sit on a buffet on display, whereas in the early years, it was all functional tableware and cut glass. The small items were in the same lines and all the variety of colors

33<sup>rd</sup> Annual  
**PREMIERE GLASS SHOW**  
 And Heisey Glass Display  
 "Family Treasures"

Featuring 40 prominent elegant glass dealers from across the U.S.

OSUN/COTC Campus, Country Club Drive, Newark, OH  
 30 miles east of Columbus off St. Rt. 16

Sponsored by Heisey Collectors of America, Inc.

In Conjunction With

**HCA's National Convention**  
 "The Family Reunion"  
 June 16 - 19, 2004

Thursday, June 17, 12:00 noon - 5:00 p.m., \$5.00  
 (Ticket sales start at 10:30 a.m.)

Friday, June 18, 12:00 noon - 5:00 p.m., \$5.00

Saturday, June 19, 12:00 noon - 5:00 p.m., FREE

Museum Open House with FREE admission

Tuesday June 15 - Sunday June 20

Other Convention events to include ID session, annual meeting, glass making classes, swap & blind auction, former Heisey employees' reception, dinner meeting

For more info: (740) 345-2932, www.heiseymuseum.org

Proceeds benefit the National Heisey Glass Museum

Visiting Cambridge? Stop by



The Area's Only Authentic Coffee Bar  
 A Great Place to Relax, Meet up with Friends,  
 and Enjoy a Treat Between Meetings or While  
 Shopping Downtown.

Located in The Potter Davis Shops, Cambridge's  
 New Downtown Mini-mall.

**Cool Beans Coffee Bar**  
 710 Wheeling Avenue ♦ Cambridge, Ohio  
 740-439-9339



Free Parking Front and Rear ♦ Meeting Space Available  
 Owned by a Member of National Cambridge Collectors

**Wildflowers (from page 9)**

of larger items, and even included some elaborate decorations in enamel and silver overlay.

We had a large number of small Carmen items, and talked about that color originally being priced about 1 ½ times the price of the other colors.

Some of the items we studied included: the small Crown Tuscan Shell Ashtray with Charleton Blue Mist decoration and a small Moonlight Blue Star Candlestick from the 30's (other colors in that item are hard to find). We had Bridge Hounds; a Crystal Satin Squirrel; a Black Amethyst Prism sign with gold "Cambridge Glass" lettering; a large variety of Salt Dips, Nut Cups, Shot Glasses and Cordials (pinched, mushroom, Tally Ho, barrel, Mt Vernon and Georgian, many of which were Carmen and one Cordial with elaborate silver overlay on Carmen; and in many etchings such as RosePoint, Chantilly, and Diane); two Blue Caprice small Mustards with completely different lids; a small ebony Candlecup to fit inside

another piece; a Caprice Alpine Powder Jar with cameo rose on the lid; small Caprice blown and pressed Tumblers; and several small Swans in various colors in Style 1, 2 and 3 (Style 1 and 2 are generally marked, Style 3 is not); small Caprice Cigarette and Toothpick holders; Caprice #249 Favor Vase in green; Amber Pin Tray with Gold Encrusted Rose; Nautilus Salt and Peppers; Royal Blue Top Hat Ashtray; Caprice tiny divided Almond; Muddlers; Wildrose Punch Cup; and a Bronze Scottie dog holder with Amber Ashtray. It was definitely interesting to see the wide and extensive variety of Cambridge's "little things!"

Our meeting ended with Show and Tell, which included a Mayo and Underplate with Gold Encrusted Valencia (remember Valencia = Vertical lines), a Crystal Hollow Stem Champagne with Hunt Scene etching; a small Bashful Charlotte reproduction by Mirror Images embossed with a Triangle C on the top of the base called "September Morn" (the base has very narrow ribs with no holes and is hollow and of poor quality); a Light Emerald Syrup Pitcher with Rosalie etch; a very early Comport with Marjorie etch; a Gadroon Individual Creamer etched Wildflower; and a large

footed bowl brought in for ID with an unusual enamel and gold rim decoration that we determined was made by US Glass and may have been decorated by Wheeling Decorating.

Our meeting adjourned at 10:45 PM.

Our next meeting will be May 7th at the home of Linda Speakman. New members in the Columbus, Ohio area are always welcome and can contact either:

Linda Roberts at  
 lrobert2@columbus.rr.com  
 or Barbara Wyrick at bwyr@ee.net

—respectfully submitted by  
 Barbara Wyrick, Secretary

**Cobalt Blue Scotties**  
 available at  
**NCC Convention**  
 \$100 the pair, plus tax

## eBay Report:

*Convention time is so busy, and this issue is just jam packed, so... the eBay Report will return in July.*

## The NCC Tape Measure

**\$5.00**

includes  
shipping  
...see page 16  
to order yours



**Don't try to measure a vase  
without it.**

Official, collectible souvenir of the Grand  
Opening of the National Museum of  
Cambridge Glass

## Reunion On The Square! Saturday, June 19th — 7am to 3pm Downtown Newark, OH 2004 Heisey Convention Event

Remember the fun and Heisey hunting of past conventions when people could set up on the Square and sell their glass? Relive the excitement on the Square in downtown Newark!

Building upon the Annual HCA Convention theme of *Family Reunion, Heisey past, present & future*, the Northern Illinois Heisey Study Club is proud to present the return of an *all glass Flea Market on the Square* with a new twist... **NO SETUP FEE.** Get as much or as little space as you need. Bring whatever size tables you need and as many as you want.

Sellers will start getting space assignments at 6am, but no glass on the tables until 7am. Remember, set up is absolutely **FREE** and *glass only please*. Contact any of the following for more details and restrictions:

Carl Bowman  
(937) 289-2114  
twocbs@aol.com

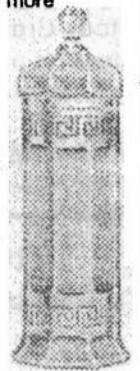
Kim Carlisle  
(317) 758-5767  
kcarisl@worldnet.att.net

Michael Maher  
(740) 763-4256  
carolyn53@webtv.net

Jeff Morrow  
(630) 833-4644  
jmorrow64@comcast.net

Joey Cogdill  
(864) 228-4741  
hizhuntr@aol.com

Shelly Hoberg, HCA  
(740) 345-2932 (Ext. 2)  
business@heiseymuseum.org



## Cambridge Glass at Easter Time



*Nancy Finley sent us these pictures of her beautiful Easter displays and table setting. Enjoy a punch bowl filled with eggs and surrounded by bunnies. An array of Charleton enameled green at left. The dark emerald Swan above makes a perfect spring-time centerpiece. Our thanks to Jim & Nancy for these photos.*

## Events:

### Belong to a Study Group? Wish You Did?

This meeting is planned for all of you: the Joint Study Group meeting at Convention on Friday, June 25, at 11:00 AM at Pritchard Laughlin Convention Center in the Conference Room.

We'll have a great time sharing ideas for ongoing groups as well as groups trying to get started. How do you get a group going? What happens at a Study Group meeting? Got any new ideas for programs? What about having fund-raising projects for NCC?

Come with questions or ideas to share! Hope we have a great turnout!

### The Line

cont'd from page 4

#2, then #3 and so on all morning. Anybody waiting at the door when the volunteers arrive at 8:00 will be given their numbered tickets in the order of their arrival. Be advised, however, the doors will not open until 8:00 sharp, so early birds will be waiting outdoors, rain or shine.

Once you have your ticket, you're free to come and go as you please. Just be back in the Galleria by 1:30 pm to take your numbered place in line, and enter the show at 2:00. If you are not in line when the doors open at 2:00, you go to the back of the pack, so don't be late.

Anyone coming to pick up a numbered ticket may take no more than two tickets. So spouses can pick up tickets for each other, but one person can't get tickets for a whole group.

We think this change will make Friday a more enjoyable day for all. See you at Convention!

## Convention Corner

by Shelley Cole, Convention Chair

It can't be June already! This is my last chance to tell you everything you need to know before you come to Convention on June 23. Here goes.

First of all, if you haven't registered, it's not too late. Registration Form is on page 13 of this issue. Be sure to get it into the mail SOON, so we can get your dinner order to the caterer in time!

There is a schedule of events on page 15 of this issue of the Crystal Ball. Please take a look at it to get a sense of what's happening and when you need to be where. We've added some really interesting items to our schedule this year – some of the most interesting being the screening of the Factory Video at our museum on Thursday afternoon, the return of the Picnic and the Field Trip to Bellaire, OH to visit the National Imperial Glass Museum on Thursday morning.

Programs will include the topic of Candelabra by David Ray, Cambridge and All That Jazz by the Miami Valley Study Group, Bring & Brag and Glass ID led by Lynn Welker and a wonderful presentation on the making of glassware by our Convention Speaker, Howard Seufer.

Check out pages 4 & 5 in this issue for more information on our presenters.

For those of you attending your first convention, don't miss the Orientation Meeting on Friday at 9:30 a.m. We'll have lots of folks for you to meet and tips on how to plan your weekend. Look for Judy & Ken Rhoads article on page 4 of this issue for more information.

One of the questions that always comes up is, "What should I wear to the banquet?" I considered going with Dorothy, Scarecrow and Wicked Witch costumes, but have decided that the better route would be to ride the Rainbow. Lets all pick the colors of the Rainbow and light up the Galleria on Friday evening! Just remember ROYGBIV – Red, Orange, Yellow, Green, Blue, Indigo, Violet. Pick a color and have fun!

Of course, one of the biggest attractions at this convention is the Show and Sale! We've got a terrific line-up this year and Ken Filippini has given us some details on page 20.

I hope you're already getting excited about Convention. See you in Cambridge!

## Museum Needs Candlestick

The National Museum of Cambridge Glass is in need of a donation of a #50, 8.5" Dolphin Candlestick (in any color) for the hands-on display area in the Education Center.

If you can help with this, please call the museum at (740) 432-4245, or e-mail Museum Chair, Cindy Arent at [ctuscan@adelphia.net](mailto:ctuscan@adelphia.net)  
THANKS!

# Somewhere Over the Rainbow

## NCC Convention 2004

### Advance Registration Form

Please complete this form and return it as soon as possible. Registration deadline was June 1; registrations sent in now will incur a late charge. Make your check payable to National Cambridge Collectors, Inc. and mail it with your completed registration form to:

National Cambridge Collectors, Inc.  
 Convention Registration  
 P.O. Box 416  
 Cambridge, OH 43725-0416

Each person registering for the convention now must pay the late registration fee of \$30.00 regardless of which events will be attended. The registration fee includes admission to the NCC Glass Show and Sale, all educational programs and entitles you to receive a Convention Booklet and Souvenir. Please register for all events you plan to attend, including those offered at no charge. For children under ten years old there is no registration fee. However, they will not receive the Convention Booklet or Souvenir.

*Show dealers: If you are a member of NCC, Inc. and wish to participate in other convention activities, registration is \$15.00 (regular registration fee less show admission charge). The benefits are the same.*

Please list each person registering separately. Names should be given as you wish them to appear on your name badge. Please provide your NCC, Inc. membership number. If registering for more than 4, please list additional members on a separate sheet.

If you would like to receive an email confirmation of receipt of this registration form, please give us your email address. **This is the only way we can provide confirmation of your registration.**

Name of Conventioneers (please print legibly)	Membership #	1 <sup>st</sup> Convention? (circle one)
_____	_____	Yes No
_____	_____	Yes No
_____	_____	Yes No
_____	_____	Yes No

Email address \_\_\_\_\_  
 (for registration confirmation)

Phone Number (\_\_\_\_) \_\_\_\_\_

*over*

# NCC Convention 2004

## Advance Registration Form

*Page Two*

ACTIVITY	FEE	NUMBER ATTENDING	Total
Registration (postmarked by June 1)	\$20.00		\$
<b>Late Registration (postmarked after June 1)</b>	<b>\$30.00</b>	_____	\$ _____
Dealer Registration	\$15.00	_____	\$ _____
Friday Evening Banquet	\$25.00	_____	\$ _____
Saturday Evening Dinner	\$15.00	_____	\$ _____
Optional Donation to NCC for _____ (i.e. roof fund, museum acquisitions, endowment, etc.)			\$ _____
		Total	\$ _____

There is a choice of entrée for the Friday Evening Banquet. Please indicate how many of each entrée you would like. (Please be sure that the number of entrée choices matches the number of conventioners registering.)

London Broil \_\_\_\_\_  
 Chicken Chesapeake \_\_\_\_\_

*This entrée contains crab meat. If you are allergic, we can leave it off. Check here for no crab [ ]*

If you have special dietary needs, please let us know here and we will do our best to accommodate you.

ø ø ø ø ø ø ø ø ø

### For Information and Planning Purposes Only

Please indicate how many will attend the following events:

Picnic, Wednesday Evening \_\_\_\_\_  
 Car Pool to Imperial Museum, Bellaire, OH, Thursday morning \_\_\_\_\_  
 Dutch Treat Dinner, Thursday evening, Theo's Restaurant \_\_\_\_\_

Major Field(s) of Cambridge Collecting:  
 (This information will appear in the Convention Packet.)

### During Convention, where will you be staying?

- My own home [ ]
- A friend's home [ ]
- Holiday Inn [ ]
- Comfort Inn [ ]
- Best Western [ ]
- Days Inn [ ]
- Budget Host - Deer Creek [ ]
- Amerihost [ ]
- Travelodge [ ]
- Salt Fork Lodge [ ]
- Other Cambridge Motel [ ]
- Bed & Breakfast [ ]
- Motel Outside Cambridge [ ]
- Other [ ]

# **"Somewhere Over the Rainbow"**

## **Schedule of Events**

### **Wednesday, June 23**

6:00 p.m. *Pool Side Picnic at the...* *Day's Inn, 2328 Southgate Parkway*

### **Thursday, June 24**

10:00 a.m. *Field Trip to...* *National Imperial Glass Museum*  
2:00 p.m. *Registration at the...* *National Museum of Cambridge Glass*  
3:00 p.m. *Cambridge Factory Video* *National Museum of Cambridge Glass*  
4:30 p.m. *Program: Candelabra (David Ray)* *Theo's Restaurant, 632 Wheeling Avenue*  
5:30 p.m. *Dutch Treat Dinner* *Theo's Restaurant*

### **Friday, June 25**

8:00 a.m. *Registration* *Pritchard Laughlin Civic Center, Galleria*  
9:30 a.m. *Orientation Meeting* *Pritchard Laughlin, Conference Room*  
11:00 a.m. *Joint Study Group Meeting* *Pritchard Laughlin, Conference Room*  
2:00 p.m. *Opening of Show & Sale* *Pritchard Laughlin, Exhibit Hall*  
2:00 p.m. *Silent Auction Bidding* *Pritchard Laughlin, Exhibit Hall*  
6:00 p.m. *Closing of Show & Sale*  
6:00 p.m. *President's Reception* *Pritchard Laughlin, Galleria*  
6:30 p.m. *Banquet* *Pritchard Laughlin, Galleria*  
8:00 p.m. *Annual Meeting* *Pritchard Laughlin, Auditorium*

### **Saturday, June 26**

7:00 a.m. *Glass Dash, Early Bird* *Beech Grove Family Development Center*  
8:30 a.m. *Glass Dash, General Admission* *Beech Grove Family Development Center*  
11:00 a.m. *Closing of Glass Dash*  
11:00 a.m. *Opening of Show & Sale* *Pritchard Laughlin, Exhibit Hall*  
1:00 p.m. *Glass ID & Bring & Brag* *Pritchard Laughlin, Conference Room*  
3:00 p.m. *Program: Cambridge Glass* *Pritchard Laughlin, Conference Room*  
*and All That Jazz (Miami Valley Study Group)*  
5:00 p.m. *Closing of Show & Sale*  
6:30 p.m. *Cocktails* *Pritchard Laughlin, Galleria*  
7:00 p.m. *Supper* *Pritchard Laughlin, Galleria*  
8:00 p.m. *Convention Speaker, Howard Seufer* *Pritchard Laughlin, Conference Room*

### **Sunday, June 27**

1:00 p.m. *Former Cambridge Glass Company* *National Museum of Cambridge Glass*  
*Employee's Reunion*

# The Marketplace:

## VIDEOS

### "The Crystal Lady" \$15.00

A video copy of an original Cambridge Glass Co. promotional film showing the making of a goblet in the Cambridge factory. 25 minutes, B&W.

### NEW: Grand Opening Video \$15.00

A high-quality video record of the Grand Opening of The National Museum of Cambridge Glass. 25 minutes, Color.

## SALT & PEPPER TOPS

**Salt & Pepper Tops \$6.00 per pair**  
Polycarbon plastic, will fit most Cambridge shakers such as Rosepoint footed and flat-bottom shakers. Also fit Heisey Rose, Saturn, Plantation, Crystolite and some Orchid. Will fit some Anchor Hocking and Candlewick.

*Order 10 or more pairs, pay only \$5 per pair*

## Books by Gene Florence

Very Rare Glassware (3rd Series)	\$24.95
Very Rare Glassware (5th Series)	\$24.95
Very Rare Glassware (6th Series)	\$24.95
Elegant Glassware (8th edition)	\$19.95
Glassware of the 40s-50s-60s (4th edition)	\$19.95
Glassware of the 40s-50s-60s (5th edition)	\$19.95
Stemware (Cordials) 1920s-1960s	\$24.95

## CONVENTION FAVORS

1995 Cranberry Ice Cascade Goblet	\$5.00
1998 Yellow Iridized Cascade Goblet	\$5.00
2000 Carnival Mt. Vernon Juice	\$5.00
2001 Carnival Mt. Vernon Juice	\$5.00
2003 Bluebell Square Sugar/Cigarette	\$5.00

## SCOTTY DOGS

### Order NEW Cobalt Blue Scotty Dogs today!

**\$100.00/pair plus tax**

Save the shipping charges - Available for pick-up at 2004 Convention!  
Made from the original mold.

### Red Scotty Dog Bookends are still available! \$100.00/pair

2000 fund raiser for NCC Museum; made in original Cambridge molds by Mosser. Marked NCC 2000.

## NCC LOGO PINS

Show your pride in being a Cambridge collector and a member of NCC.

Only \$5.00 includes shipping



## NCC Tote Bags \$10.00

## Ordering Information

NCC Members get a 10% discount on all books so listed on page 17. There are no discounts on any other items.

### SHIPPING & HANDLING RATES:

First item	\$3.00
Each additional item	\$1.00

### SPECIAL SHIPPING:

- Scottie Dogs: \$10/pair for shipping
- Salt/Pepper Tops: \$3 shipping for any size order
- Jadite Tumblers: \$3 each, \$10 for a set of six
- Logo Pins: shipping included in price

OHIO RESIDENTS:  
PLEASE ADD 7.5% SALES TAX

Payments by check or money order only.

Send orders to:

NATIONAL CAMBRIDGE COLLECTORS, INC.  
PO BOX 416  
CAMBRIDGE, OH 43725

*Be sure to include your complete shipping address and phone number.  
Thanks!*

## Crystal Ball

### Table of Contents for The Crystal Ball

Issues #69 - #320  
(Jan 1979 - Dec 1999)

**Only \$2.00**

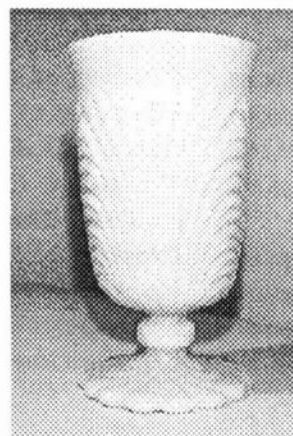
### Back Issues of The Crystal Ball

Sold by the year:

1999 • 2000 • 2001 • 2002

**\$5.00 per year**

## Jadite Tumblers



**\$20 each; set of 6 for \$100**

plus shipping charges of \$3 each or \$10 for the set of 6

Made for the NCC by Mosser Glass  
Marked on the bottom: NCC 2002



# The Marketplace:

## Books for Sale

FOR ORDERING INFORMATION, SEE FACING PAGE

**NCC Members receive a 10% discount on the following books:**

1910 Near Cut	108-page reprint of the 1910 Catalog Paperback with price guide	\$14.95
1930-34 Catalog	250-page reprint of 1930 thru 1934 Catalogs Paperback with price guide	\$14.95
1930-34 Index	for above	\$2.00
1956-58 Catalog	160-page reprint of 1956 thru 1958 Catalogs Paperback (no price guide)	\$12.95
Caprice	200 pages; lists colors, decorations, reproductions, etc. Paperback with value guide	\$19.95
Caprice Value Guide	2003 Values (when purchased separately)	\$5.00
Colors in Cambridge Glass	128 pages including 60 color plates; fully indexed Hard-cover with price guide	\$19.95
Decorates	136-page Paperback (no price guide)	\$14.95
Etchings, Non-Catalogued	70-page Paperback (no price guide)	\$12.95
Etching: Blossom Time	26-page Paperback (no price guide)	\$7.95
Etching: Candlelight	30-page Paperback (no price guide)	\$7.95
Etching: Chantilly	44-page Paperback (no price guide)	\$7.95
Etching: Diane	53-page Paperback (no price guide)	\$7.95
Etching: Elaine	64-page Paperback (no price guide)	\$9.95
Etching: Portia	57-page Paperback (no price guide)	\$7.95
Etching: Wildflower	42-page Paperback (no price guide)	\$7.95
NEW! Rock Crystal Engravings	Paperback (no price guide)	\$17.95
NEW! Rock Crystal Engravings: The Listings		\$9.95
Rosepoint	by Mark Nye; a comprehensive guide to Rosepoint Showing all blanks plus history of the line. 94 pages; Paperback with value guide	\$14.95
Rosepoint Value Guide	Values as of 2000 (when purchased separately)	\$5.00

**The following books do not offer any discounts:**

NEW! The Glass Candlestick Book	by Tom Felt and Elaine & Rich Stoer Volume I: Candlesticks from Akro Agate thru Fenton Hardback, 254 pages, full color.	\$24.95
Charleton Decorations	by Michael & Lori Palmer; a comprehensive guide to Charleton; full-color. Hard-cover (no price guide)	\$29.95
1903 Catalog	106-page reprint by Harold & Judy Bennett Paperback (no price guide)	\$5.00
1927-29 Catalog	66-page reprint by Bill & Phyllis Smith Paperback with price guide	\$9.95
1940 Catalog	250-page reprint of the largest Cambridge Catalog (loose 3-hole punched pages) No price guide	\$25.00
1940 Catalog Binder	for above; with Cambridge logo on front	\$5.00
Reflections	by the Degenhart Paperweight & Glass Museum A history of Guernsey County glass production; 45-page Paperback	\$5.00
Stemware	by Mark Nye; shows all Cambridge stemware lines 167 page Paperback (no price guide)	\$19.95
Universal Dinnerware	by Timothy J. Smith. Includes Cambridge Art Pottery, Guernsey earthenware, Oxford Pottery and more. 176 pages, color, Paperback	\$29.95
Welker – Volume I	by Lynn & Mary Welker; reprints from several Cambridge Catalogs. 120 pages, Paperback (no price guide)	\$10.00
Welker – Volume II	by Lynn & Mary Welker; 15 color plates showing choice Pieces from their vast collection	\$5.95



## Stems Without Thorns

As the world's largest supplier of old & new china, crystal, silver and collectibles, Replacements, Ltd. has more than 700 different patterns of Cambridge crystal.

And however much we enjoy selling pieces that were once thought irreplaceable, we love buying them as well. Thanks to people like you, our crystal inventory currently numbers in the hundreds of thousands, and the numbers keep growing every year.

So, if you've been unsuccessfully searching for that elusive piece of Cambridge — or any other type of fine crystal — call us for a free list of pieces available in your pattern. And, if you're looking to sell pieces you currently have, we can help you there, too.

**REPLACEMENTS, LTD.**  
*China, Crystal & Silver • Old & New*

**1-800-REPLACE**  
**(1-800-737-5223)**

1089 Knox Road.  
PO Box 26029, Dept. CB.  
Greensboro, NC 27420  
[www.replacements.com](http://www.replacements.com)

*Remember the Century Club in 2004*

### DEALER DIRECTORY

#### THE GLASS URN

456 West Main Street, suite G  
Mesa, AZ 85201 480-833-2702  
480-838-5936

Mail Order Shows Open Shop

CAMBRIDGE, FOSTORIA, HEISEY, etc.

#### THE DEGENHART PAPERWEIGHT AND GLASS MUSEUM, INC.

P.O. Box 186  
Cambridge, OH 43725-0186

Intersection of US 22 & I-77  
Phone 740-432-2626

#### GREEN ACRES FARM

2678 Hazelton Etna Rd.  
Pataskala, OH 43062  
(State Route 310 North)

Sat & Sun 1-7 pm 740-927-1882  
Antiques, Crystal Glass & Collectibles

**YOUR AD COULD BE HERE**  
**ADVERTISE YOUR SHOP OR SERVICE**  
**JUST \$24 A YEAR**  
SEE INSIDE FRONT COVER FOR DETAILS

#### GLASS FROM THE PAST

Maureen Gillis



[www.cyberattic.com/~glassfrompast/](http://www.cyberattic.com/~glassfrompast/)  
email: [tomopartners@snet.net](mailto:tomopartners@snet.net)  
tel: 860-526-3413

#### ALADDIN LAMP BOOKS

Free History of Aladdin Lamps  
Figurine Lamps Wanted  
Bill & Treva Courter

3935 Kelley Rd. Kevil, KY 42053  
Phone 270-488-2116 FAX 270-488-2055

#### Fostoria Glass Society of America

Traveling Ambassadors  
Ralph & Joyce Rider

For info: 817-545-5856  
E-mail: [r.rider@sbcglobal.net](mailto:r.rider@sbcglobal.net)

**YOUR AD COULD BE HERE**  
**ADVERTISE YOUR SHOP OR SERVICE**  
**JUST \$24 A YEAR**  
SEE INSIDE FRONT COVER FOR DETAILS

### For Sale:

#### Caprice, Moonlight Blue:

- 184 style Tumblers (8 available) \$60 each
- 11" handled footed console bowl \$130
- Doulton Style Pitcher \$5,000

Candlewick Mallard Duck Punchbowl Set \$500  
call Patty Elwood (419) 759-3841

#### Stem 3779 of:

- Daffodil - 3 short sherbets, 1 wine, 3 short goblets
- Chantilly - 2 short sherbets, 2 tall goblets

Call Jan/Jess Adler  
(248) 398-2447

SELL YOUR GLASS HERE... an ad like this costs just \$2, and reaches over 1,000 Cambridge collectors.

### Wanted:

Amber Nudes (3011):  
Sauterne, Roemer, Hoch, Ashtray,  
Champagne, Cig. Holder, Tulip,  
Blown Candy.  
E-mail [slunicorn@aol.com](mailto:slunicorn@aol.com)

FIND GLASS HERE... a "Wants" ad like this costs less than \$3, and reaches over 1,000 Cambridge collectors. You may locate that one elusive piece, or fill out a set!

# DEALER DIRECTORY

When writing to these dealers, please enclose SASE

**DAUGHERTY'S ANTIQUES**  
Jerry and Shirley  
Antiques and Collectibles • Mostly Glass  
www.daughertys-antiques.com  
e-mail: sdaugh2616@daughertys-antiques.com  
Shows & Mail Orders 2516 Cheshire North  
(402) 423-7426 evenings Lincoln NE 68612

**Milbra's Crystal** Buy & Sell  
Replacement and Matching Specializing in  
Cambridge,  
Fostoria, Heisy  
and others.  
Milbra Long (817) 645-6066  
Emily Seate (817) 294-9837  
PO Box 784  
Cleburne TX 76033  
E-mail: longseat@sbcglobal.net  
www.fostoriacrystal.com

**BARNESVILLE ANTIQUE MALL**  
open 7 days, 8 - 5  
Roger, Nancy and Brian Mayhugh  
Owners  
202 N. Chestnut St. 740-425-2435  
Barnesville, Ohio 43713 3 floors  
EXIT 202 OFF I-70 • always buying & selling antiques

**THE TEAM**  
**ESTATE SALES**  
Liquidations • Appraisals  
Consignments • Senior Services  
Estate sales with some style and a bit of flair  
ED TUTEN 7007 McVay Place  
901-758-2659 Memphis, TN 38119  
www.teamestatesale.com

**THE GLASS CUPBOARD**  
P.O. Box 652  
West End, North Carolina 27376  
Marcia Ellis Cambridge Show  
910-673-2884 and Mail Order

**FINDER'S ANTIQUE HOUSE**  
3769 Highway 29 North  
Danville, VA 24540  
(434) 836-6782  
Cambridge • Heisy • Duncan • Fostoria  
Open Wed - Sat 11 00 to 5 00 (seasonal hours apply)  
Monday thru Saturday 10 - 5:30 Sunday 12 - 5:30

**Bogart's Antiques**  
BUY - SELL - APPRAISE - REFINISH  
CANE & REED CHAIRS - CLOCK REPAIR  
Jack & Sharon Bogart State Route 40  
740-872-3524 shop 7527 East Pike  
740-826-7439 home Norwich, OH 43707

**BAKER FAMILY MUSEUM**  
805 CUMBERLAND ST.  
CALDWELL, OHIO 43724  
740- 732-6410  
Mon & Thurs 9-4; Fri - Sat 9-5  
Call for Sunday Hours

**CRYSTALLINE COLORS**  
Buy, Sell and Appreciate  
Cambridge and other Elegant Glass  
I Love Cambridge  
Lynne R. Franks 216-661-7382  
Ohio Antique Malls

**CRYSTAL LADY**  
Thurs - Sat 11-5  
1817 Vinton St. Omaha, NE 68108  
Bill, Joann and Marcie Hagerty  
Shop 402-341-0643 Home 402-391-6730  
Specializing in Elegant Glass & Collectibles  
www.crystalladyantiques.com

**Storck's Antiques**  
**Rick & Joyce**  
Antiques & Collectibles • Glass & Pottery  
Specializing in Fenton, Imperial & Cambridge  
Shows & Mail Orders • Storck1@aol.com  
Greenfield, MN 55373 • (763) 477-6415

  
**Mother Drucker's**  
Penny Drucker  
Specializing in Elegant Glassware  
Shows and Mail Order  
P.O. Box 50261 Phone: 949-551-5529  
Irvine, CA 92619 888-MDRUCKER  
Website: http://motherdruckers.com


**Deborah Maggard, Antiques**  
Specializing in Cambridge Glass,  
American Hand-Made Glass & Victorian Art Glass  
Please stop and see our extensive collection of  
Cambridge Glass at Riverfront Antique Mall in  
New Philadelphia, Ohio (I-77, exit 81)  
Booths 806 and 812  
You won't be disappointed.

We buy one piece or entire collections.  
Please contact me at 440-247-5632  
and leave a message, or e-mail at  
debmaggard@adelphia.net  
P.O. Box 211  
Chagrin Falls, OH 44022

**JUDY'S ANTIQUES**  
Judy Bennett  
422 S. Ninth Street (corner of Jefferson)  
Cambridge, Ohio 43725  
Business (740) 432-5855  
Residence (740) 432-3045  
**CAMBRIDGE GLASS MY SPECIALTY**

**BRIDGES THRU TIME**  
Elegant Glassware & Antique Collectibles  
Located at Alvin Antique Center  
2500 South Loop 35 • Alvin, TX 77511  
For Web Storefront and Auctions  
Website: www.pier.com/store/BridgesThruTime  
E-mail: cambridge@houston.rr.com

**THE JONES GROUP**  
Cindy Jones  
Buy and Sell Cambridge Glass  
650 Riverside Drive  
Sleepy Hollow, NY 10591  
914-631-1656 or E-mail Caprice0@aol.com

  
**Mary Jane's Antiques**  
Early American Pattern Glass  
Depression Era Items  
2653 Burgener Drive 217-422-5453  
Decatur, IL 62521 mjhumes@aol.com

**THE GLASS HOUSE ANTIQUE MALL**  
Furniture, Pottery, Glass  
Antiques and Collectibles  
I-70 Exit 146, East on SR 40  
8825 E. Pike  
Norwich OH 43767 TEL 740-872-3799

**GATEWAY ANTIQUE MALL, INC.**  
JUST NW OF MINNEAPOLIS-ST. PAUL, MN  
Next to Super 8 in Rogers, MN  
(I 94/101 intersection)  
85 Dealers • 7 days; 10 - 6 • 612-428-8286  
ELAINE STORCK, OWNER/DIRECTOR

**ISAACS ANTIQUES**  
(740) 826-4015  
See our booths in Penny Court Mall in  
Cambridge and at White Pillars Antique Mall  
(Route 40, one mile west of  
I-70 Norwich, OH • Exit #164)

**PENNY COURT MALL**  
637 Wheeling Avenue  
Cambridge, Ohio  
100 Booths 15,000 sq ft  
HOURS Daily 10-6 Sunday Noon-5  
Closed Easter, Thanksgiving, Christmas  
Call for other holiday hours 740-432-4369

**MARGARET LANE ANTIQUES**  
2 E. Main St. New Concord, OH 43762  
Lynn Welker (740) 826-7414  
Cambridge Glass Matching Service  
Hours: Mon-Fri 10-12 AM, 1-5 PM  
or by appointment

  
Linda & David Adams  
Las Vegas, NV  
702-838-1341 or  
800-357-7169  
Web: www.OurHouseAntiques.com  
E-mail: David@OurHouseAntiques.com  


# The 29th Annual NCC Glass Show & Sale

by Ken Filippini

The temperature is rising, the grass is growing, the barbecues are lit and the 29<sup>th</sup> Annual Cambridge Glass Show is almost here. The dealers are packing their glass, the Show Chairs are making final arrangements and the Cambridge Glass enthusiasts are making reservations. All are getting ready to descend on Cambridge for the Glass Show on June 25 & 26, at the Pritchard Laughlin Civic Center.

Show Chairs Joy McFadden and Mary Beth Hackett are excited about this year's show, expecting it to be one to remember. With a combined 30 years of service to the show, they should know. This year's cadre of dealers includes many of the top Cambridge Glass dealers we have all grown to appreciate. Included are such notables as Lynn Welker, Les Hansen, Rick & Cindy Jones, Charlie & Loretta Weeks, Jim & Leora Leisure, to mention a few. However, this year we are in for a treat, as many new, wonderful dealers will be joining the show. These include Odie Fincham, Bob & Karen Arnold (both from Pennsylvania); Kenneth & Char Fahs from Wisconsin; Linda & David Adams of Las Vegas and Deen Warren of Palm Spings, California. As you can see, dealers are coming from all parts of the US to make this year's show something special.

If you have been to the show in the past you already know what a fabulous event it is. If this will be your first, I assure you it will exceed your expectations. The sea of Cambridge glass you will encounter at the show is something that makes a sunny June day even more brilliant. I for one, am anxiously awaiting this event. Hope to see you there.

**NATIONAL CAMBRIDGE COLLECTORS, INC.**  
**P.O. BOX 416**  
**CAMBRIDGE OH 43725-0416**

Website: [www.cambridgeglass.org](http://www.cambridgeglass.org)  
E-mail: [NCCcrystalball@aol.com](mailto:NCCcrystalball@aol.com)

# Road Trip to the NDGA Show

by Alex Citron

Living in Virginia, Shelley and I have to plan our visits to Cambridge a little more carefully than our friends in Dayton. It's a six hour drive we almost know by heart now. We know the nicest antique shops, the best restaurants, the cleanest restrooms and the shadiest spot to take a roadside nap. Our quarterly trips to Cambridge have become the linchpins of our year; it is around those trips that we schedule nearly everything else.

This year, however, we are facing a special challenge. We have decided to drive to the National Depression Glass Association Convention & Show in Council Bluffs, Iowa. That's a good deal farther than we're accustomed to driving, but we're doing a book table and Shelley's been nominated to the NDGA Board, so a road trip seemed in order. The problem is that the NDGA Convention is only two weeks after the NCC's, and we don't relish all that back and forth driving.

Since we're a little bit crazy (by definition as glass collectors), we have decided to drive from Virginia to Cambridge, then on to visit Shelley's family in Denver, then northeast to Council Bluffs and finally back to Virginia. Along the way, we'll be doing some sightseeing in Tennessee and Arkansas, plus paying a visit to the Finleys in Sedalia, MO. These two glass shows have become a 22-day, 6,000-mile road trip. Yikes!

That's what we do for glass. We're hardly the first, and we surely won't be the last to load up the van and head for the shops and shows. We hope to see some of you along the way. Have a great summer!

FIRST CLASS MAIL  
US POSTAGE  
PAID  
PERMIT No. 3  
CUMBERLAND OH 43732

**FIRST CLASS MAIL**

*Membership Renewal Notice:  
If the date above your name  
is 06-04, this is your last issue,  
and your NCC Membership has expired.  
Please renew today.*