

e Crystal Ball

Published monthly (except July) by National Cambridge Collectors, Inc. to encourage and report the discovery of the elegant and boundless product of the Cambridge Glass Company of Cambridge, Ohio

Issue No. 398

August 2006

“It’s Convention; You’re Supposed to be Tired” 33rd Annual NCC Convention Kept Attendees on Their Toes

From June 21st thru 25th, one-hundred and seventy-two NCC members gathered in Cambridge for the 33rd Annual Convention of National Cambridge Collectors, Inc. By all measures, it was a tremendous success.

The Convention kicked off Wednesday with a pool party at the Days Inn. Afternoon thunderstorms almost moved the event indoors, but the skies cleared just in time. Ninety members ate fried chicken as they caught up with their glass collecting friends. Each year, more and more people come to Cambridge early for the informal poolside gathering.

On Thursday, this year’s nine first-time attendees were greeted at the museum by Judy & Ken Rhoads and the Mentors. The orientation was followed by a fascinating educational program by the Miami Valley Study Group. The presentation, a DVD history of Cambridge production during 1931 and 1932, was entitled, “Cambridge” Ladies and All.” The DVD is now available for purchase; see page 16 to order your copy.

Friday featured the annual Joint Study Group Meeting, and an informative Q&A session hosted by NCC Board officers Ken Filippini, Rick Jones and Mike Strebler. Members discussed several ongoing NCC programs, including planned giving (Heritage So-



Ralph Warne (Newark, OH) catches a few ZZZZ's at the Glass Dash

ciety), the new “Symphony” membership structure and technological changes in NCC communications and outreach.

The week’s highlight, the Glass Show & Sale, opened its doors at 2:00 pm, with over 120 collectors waiting in line for the best selection. The Russell-Berry family of Flint, Michigan, were first in line again this year. Nineteen top-notch dealers offered the usual array of stunning glassware by Cambridge and other Elegant Glass manu-

facturers. Sales were brisk; everyone leaving the show seemed to have several bags cradled carefully in their arms!

Friday evening, the President’s Reception and Banquet, catered by Classic Fare, included Teriyaki Salmon, Chicken Cordon Bleu and an exceptional Strawberry Shortcake. After dinner, the mini-auction was revived, featuring Alex Citron as auctoneer and master of ceremonies.

continued on page 5

CONVENTION PHOTOS ON PAGES 12 - 14

National Cambridge Collectors, Inc.

PO Box 416 Cambridge, OH 43725-0416

Membership

Patron: Single \$22; with 1 Associate \$25

·Additional Associate memberships are available at \$3 each.

Benefactor - Century: \$100

·Includes membership for Master Member and unlimited Associate Members, plus Century Club membership for Master Member.

Benefactor - Mardi Gras: \$200

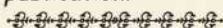
·Includes membership for Master Member and unlimited Associate Members, plus Century Club membership for all members (limit of two plaques in Museum).

Benefactor - Japonica: \$500

·Includes membership for Master Member and unlimited Associate Members, plus Century Club membership for all members (limit of two plaques in Museum).

President's Circle: \$1,000

·Includes membership for Master Member and unlimited Associate Members, plus Century Club membership for all members (limit of two plaques in Museum). Also includes Convention registration for two adults and one copy of each new NCC book upon publication.



Associate Members must be at least 18 years of age and live in the same place of residence as the Master Member. Associate Members have full voting rights, but do not receive an additional copy of the newsletter.

Address Changes

Please send address changes to:

Membership - NCC
PO Box 416
Cambridge, OH 43725

or by e-mail to:

lin26@hocking.net

Board of Directors

Linda Adkins	Cindy Arent	Shelley Cole
Larry Everett	Ken Filippini	Rick Jones
Sharon Miller	Mark Nye	David Ray
Mike Strebler	Lorraine Weinman	Lynn Welker

Officers & Committee Chairs

President	Rick Jones
Vice-President	Ken Filippini
Secretary	David Ray
Treasurer	Mike Strebler
Sergeant-at-Arms	Larry Everett

Acquisitions Committee	Lynn Welker, Chairman
Archives Committee	Mark A. Nye, Archivist
Budget & Finance Committee	Mike Strebler, Chairman
By-Laws Committee	Alex Citron, Chairman
Crystal Ball	Alex Citron, Executive Editor
Endowment Committee	Rick Jones, Chairman
Facilities Committee	Carl Beynon, Chairman Joe Miller
Grants & Fundraising Committee	Sharon Miller, Chairman
Long-Range Planning Committee	(vacant)
Membership Committee	Linda Adkins, Chairwoman Freeman Moore, Development Chairman
Museum Committee	Cindy Arent, Chairwoman
Nominating Committee	Ken Filippini, Chairman
November Program Committee	David Ray, Chairman
Projects Committee	Bill Hagerty, Chairman
Publications Committee	Mark A. Nye, Chairman
Publicity Committee	Lorraine Weinman, Chairwoman
Study Groups	Judy Rhoads, Advisor
Technology	David Adams, Webmaster Alex Citron, ebay Store
Auction Committee	Dorothy Rieker Squeek Rieker Lynn Welker
Convention Committee	Shelley Cole, Chairwoman
Glass Show & Sale	Mary Beth Hackett, Co-chairwoman Joy McFadden, Co-chairwoman
Glass Dash	Larry Everett, Co-chairman Susan Everett, Co-chairwoman
Books & Merchandise Fulfillment	Linda Adkins

National Museum of Cambridge Glass



Located at 136 S. 9th Street in
downtown Cambridge, OH

Wed-Sat 9am - 4pm · Sun Noon - 4pm

Admission: \$3, Seniors & AAA members \$2
NCC Members & children under 12 FREE

Contacts

NCC Museum [open April thru October only]

(phone) (740) 432-4245

(fax) (740) 439-9223

Rick Jones, President e-mail: Caprice0@aol.com

David Ray, Secretary e-mail: westervillesh@hotmail.com

Alex Citron, Crystal Ball Editor ... e-mail: apcpenguin@adelphia.net



President's Message

Clearing Some Confusion

First off, no that is not Ken Filippini's picture up there. It's me, Rick Jones. Ken and I have flip-flopped positions for the 2006-2007 NCC "season." Our friend Ken has some nagging health items he wants to attend to and felt it might compromise the time he has to devote to Club business. And, if you know Ken, he wants to be 100% focused and on the ball to help lead club activities.

I'm personally very proud about how Ken has helped transition the club through to the next stage of our life – a thriving national organization with a sensational heart and soul and a first class museum in Cambridge. He will remain very active as his time permits in his role as Vice President. He and Jane will continue to play a big role in major activities like membership development, endowment and the continued implementation of our Symphony model for membership.

That brings me to the next point of confusion that was aired out productively both at our highly successful 2006 Convention (...aside to Shelley Cole – you did an awesome job!) and in our Board Meeting that weekend. The addition of "membership as a benefit" to the Century Club participation raised some questions:

- Ø Do I get a plaque on the wall?
- Ø What do I need to contribute to get two plaques?
- Ø Can't I just buy two Century memberships (\$100/each) rather than have to join at the Mardi Gras (\$250) level?

Since the "plaques on the wall" of the museum are important to many donors, we needed to clarify our policy. Also, it made no sense having two master members at \$100 each getting a Crystal Ball – not a smart redundancy. So we have done the following:

- Ø Moved the Mardi Gras level from \$250 to \$200 – each household will get one Crystal Ball and two plaques on the wall (master member, family or partner or spouse)
- Ø At the Century level (\$100) the master member will get one plaque
- Ø For the Japonica (\$500) and President's Circle (\$1000), they will still only receive two plaques on the wall should they wish them
- Ø In the President's Circle, you also receive two free convention registrations and one free copy of each book we publish.

It's very pleasing to announce that we now have five members of the President's Circle – the Reikers, Streblers, Finleys and now Bob and Margaret Downing of Texas (in addition to Cindy and me).

I ask all of you as you evaluate your personal choices, to consider NCC to be one of the top three-five charities you

support. We are making major strides as a preservation organization and your support helps make these initiatives possible.

And finally, there's a new dog in town. I know you have all loved hearing the tales of wisdom and fundom from my buddy, Cooper – the Filippini's pooch, but there's a new sweetheart of the Triangle C – Samantha Jones. Many of you had a chance to meet Samantha, then 10 weeks old, at Convention as we picked her up from a Reading, PA breeder.

For those of you (notably The Ellis') who asked for a travelogue of Sam's journey back to Colorado, she was an angel. All Sunday we would not let her nap. We kept playing with her. Kids kept playing with her, so, by the time she hopped the United flight from Columbus to Denver, she snoozed the whole way! She then met her new sisters Grace (now four) and BeBe Basketball Jones (soon to be ten) and they are getting along well.

I promise to keep you posted on the Jones Girls and our buddy Cooper, as I know he built quite a following. And personally, I am happy to be back in such an important role of service to the Club. We have an excellent team, a deep bench and I am surrounded by professionals with a passion for Cambridge Glass. Makes my job easier!

Rick

The Crystal Ball

PO Box 416 Cambridge, Oh 43725
e-mail: NCCCrystalBall@aol.com

Staff

Executive Editor	Alex Citron
Research Editor	Les Hansen
ebay Report	John Peterson
Advertising Manager	Jeannie Moore
Circulation	Sharon & Joe Miller
.....	

Editorial Policy

Research materials submitted are subject to review by the Research Editor or other experts. All submissions are subject to editing for length, accuracy and conformity to norms of style, spelling, punctuation and grammar. No advertising will be accepted on behalf of candidates for NCC or other elected office, nor for or against any legislative matter before the NCC Board or membership.

An electronic version of this newsletter is available via e-mail. Just contact us at NCCCrystalBall@aol.com to start your free subscription. You will continue to receive the paper version as well.

Dealer Directory is \$24 for 12-months, size limited by box (see page 19). Includes listing on NCC website.

Artwork must be submitted in electronic (jpeg, tiff or bmp) format, unless special arrangements have been made in advance with the editor. Photos must be minimum 300 dpi.

Advertising Rates

1/8 page \$15	1/4 page \$20
1/2 page \$30	Full page \$50
(plus \$5 per photograph)	

Classified Ads: 10 cents/word, with a \$2.00 minimum.

Electronic submissions should be e-mailed to NCCCrystalBall@aol.com. Use Word, PageMaker or Adobe PDF. Mailed submissions and all payments should go to PO Box 416 Cambridge OH 43725. Deadline is 10th of preceding month. Ads must be paid in advance. Show listings are FREE; send info to PO Box or e-mail address 60 days before event.

David Ray, Mike Strebler, Lorriane Weinman Elected to NCC Board of Directors

At the Annual Convention Banquet on June 23rd, Nominating Committee Chair Rick Jones announced the results of the 2006 election of Directors.

The slate of candidates included incumbent Board members Mike Strebler, Lorriane Weinman and Frank Wollenhaupt; plus David Ray. Over two-hundred thirty ballots were cast and Ray, Strebler and Weinman were elected to the Board of Directors.

Frank Wollenhaupt, as fourth-place finisher, was named First Alternate, and will assume a seat on the board if a vacancy occurs during the coming year.

Mike Strebler, who has been Chairman of Budget & Finance, has served on the Board for four years. Lorriane Weinman, Chair of Publicity, and former Editor of the Crystal Ball, has been on the board since 1998. David Ray, who is Chair of The Program

NCC BOARD SELECTS NEW OFFICERS

At their meeting on Sunday, June 25th, the NCC Board of Directors elected officers for the 2006-2007 operating year.

Chosen as President was former President Rick Jones, of Windsor, Colorado. 2004-2006 President, Ken Filippini (Midland Park, NJ), was elected Vice-President.

Mike Strebler of Hudson, Ohio, was elected Treasurer. Mike has served as Chairman of the Budget & Finance Committee for the past four years.

Newly elected Board member, David Ray of Columbus, Ohio, was chosen as Secretary. Larry Everett will serve as Sergeant-at-Arms.

Committee, was elected to the Board for the first time. Frank Wollenhaupt served for two years, having joined the Board upon the resignation of Charles Upton.

All three Board members elected this year are residents of Ohio, which makes the Board's current geographical composition as follows:

Ohio (8): Linda Adkins, Cindy Arent, Larry Everett, Sharon Miller, David Ray, Mike Strebler, Lorriane Weinman, Lynn Welker

Colorado (1): Rick Jones

Michigan (1): Mark Nye

New Jersey (1): Ken Filippini

Virginia (1): Shelley Cole

Members of the Board of Directors are elected for terms of four years, with three members elected each year. Next year's election will be for the seats currently held by Cindy Arent,

Larry Everett and Lynn Welker. Nominating Committee Chair, Ken Filippini, will announce the slate of candidates at the March 2007 Quarterly Meeting.

August Quarterly Meeting at Theo's

NCC's next Quarterly Membership Meeting will be held on Saturday, August 19th at Theo's Restaurant on Wheeling Avenue in downtown Cambridge.

Lunch from the Theo's menu will be available at noon, and the meeting will follow. Reservations are not necessary.

The August Quarterly Meeting is the least attended of the four, but is always an enjoyable afternoon for those who attend. We hope to see you there.



Former workers of The Cambridge Glass Co. met on Sunday, June 25th, at The National Museum of Cambridge Glass for their annual reunion sponsored by The Cambridge Cordials.

Those in attendance were: (front row, left to right) Clara Valentine, Julia Froment Burris, Minnie Johns, Margaret Sowinski, Alice M. Howell, Dorothy Golden, Evelyn Klass, Mary Holliday, Laverne "Whitie" Klass.

(second row, l. to r.) Margaret Davis Oliver, Mary F. Wigginton, Shirley Barnett, Jeannie Selock, Marjorie Headley Gardner, Betty Frontz, Vera Holliday, Sis Cantor, Faye Bonnell Culbertson, Mary Ellen Pattison, Jean Turner Cunningham. (back row, l. to r.) Gracie Endly Stevens, Bill Boyd, Jack Jones, Dave Dugan, Bob Selock, Raymond Slifko, Harold Conrath, Donald Frontz, Ed Lehotay, Raymond Cunningham.

NCC CONVENTION 2006

continued from page 1

The action began with Lynn Welker auctioning an empty wine bottle, traditionally sold annually by Willard Kolb as a fundraiser. This year, the bottle was claimed by Fleur de Lis Healy (Orlando, FL) for a generous bid of \$1,500. Buoyed by his success, Lynne then auctioned off a half-full water carafe, netting \$1,480 from a syndicate of anonymous members.

The sale of twenty-six lots of glass followed, raising another \$3,200 for the NCC. The auction featured a number of first-rate pieces, including a Portia-etched Nude Claret.

The Annual Membership Meeting followed the dinner and mini-auction.

Saturday began at 7:00 am, with the Glass Dash. Several educational programs were held during the day, including Diane Gary's outstanding presentation of Chantilly. A version of her program is scheduled for inclusion in the Crystal Ball in the coming months.

Mike Strebler premiered a new program called "Tell Me About It." During this lively hour, several members of NCC told their glass-collecting stories to room full of other collectors. The new program was a rousing success, and is almost sure to be repeated in 2007.

Saturday's dinner was a Mexican Fiesta, catered by Classic Fare. Some ninety members attended. Following the burritos and enchiladas, local Cam-



Judy Momirov, Joe Andrejcek and Cindy Arent at the Mexican Fiesta

bridge historian, David Adair, presented a slide show titled, "The End of the Factory." The program consisted of a photographic record of the demolition of the Cambridge Glass factory in 1983. The packed room found it fascinating, but also rather sad. Many members expressed regret that the building had not been preserved as an historical site.

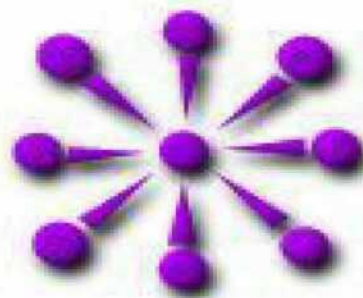
As conventioners left the Civic Center Saturday night, there was apparent unanimity: Convention 2006 was a particularly good one, and a grand time was had by all.



This slide, part of David Adair's presentation, "The End of the Factory," shows the Cambridge plant just before its demolition.

1949-53 Cambridge Catalog AVAILABLE AGAIN

Out of print for over a year, this vital research guide is once again available through the NCC website and ebay stores
\$19.95 (\$17.95 for members)
See page 17 to order



Work Day at the Museum



Above: Kay Marchant plants while Lynn Welker power washes.

At Right: Mike Strebler & Carl Beynon do their part to spruce things up.

Jeannie Moore Receives Volunteer Award Joy McFadden Named Lifetime Member

Jeannie Moore, of Flower Mound, TX, was named the recipient of the Phyllis Smith Award for 2006. NCC President, Ken Filippini, made the announcement during the annual banquet at the Convention.

Jeannie, along with her husband, Freeman, mans book and membership tables at a number of regional glass shows each year. She has been instrumental in increasing NCC's visibility throughout Texas and the Southwest. She also serves as Advertising Manager for The Crystal Ball.

The award, named after long-time NCC member and Crystal Ball editor Phyllis Smith, recognizes outstanding volunteer service by someone not on the NCC Board of Directors. Previous winners include Carl beynon, Jeff Ross and Alex Citron.

Also announced at the banquet was a Lifetime Membership bestowed on Joy McFadden. Joy is a former NCC President and current Glass Show co-chair. She has also worked on the annual Auction for many years. Joy is one of only five NCC members to have attended every NCC Convention.



In Memoriam Irma Griffin

It is with a very sad heart that I wanted to let the club know that a wonderful friend, long time club member, and fellow glass lover and collector, Irma Griffin, of Ansonia CT, passed away on June 9th, 2006. Irma had fought a valiant fight for years with a devastating disease, and through it all, she never lost her spirit, her humor, or her excitement and love for life, her friends, and her passions, which included Cambridge Glass. Irma had been a dealer for years at the annual convention, and everyone who met her was touched by her caring personality, and immediately knew what a special person she was. She will be missed terribly by the club and all her friends who loved her.

--submitted by Barbara Wyrick

In Memoriam Lawrence A. Powers

NCC member, Lawrence A. "Larry" Powers passed away unexpectedly on May 31st. Services were held June 3rd in Kansas City, where Larry and wife "Mimi" had moved in Dec. 2005, after 45 years in the Chicago area.

Larry was a longtime member of NCC, a member of the Cambridge Nudes Study Group in Chicago, and a frequent

visitor to the museum. Larry was known to many as "The Shot Glass Man." He was an avid collector of whiskey-related glass, and ran "The Shot Glass Exchange," a nationwide mail-in auction for many years. He also published "Antiquing Trip Planner," and "Professional Antique Mall Owner/Manager."

On behalf of the members of NCC, The Crystal Ball offers condolences to Larry's wife and family.

Lifetime Collection of Cambridge Glass

AUCTION

Saturday, October 14th @ Noon
Adventureland Inn Grand Ballroom
3200 Adventureland Drive, Altoona, Iowa

We will be selling the Cambridge glass collection of Mary Ann & Forrest Johnson of Fort Dodge, Iowa

Mardi Gras 6" vase; Bluebell & Gold Kystol 8" turkeys; Coral "Flying Nude"; Windsor Blue compotes; Rose Du Barry flower center w/ Draped Lady; Rubina 11 1/2" basket; Light Emerald Keg Set; experimental blue plate Ivy Ball vases (ebony, royal blue, amber, crown tuscan, amethyst, forest green, crystal)
Swans (crown tuscan, ebony, carmen, light emerald, peach blo, mandarin gold, crystal)
Nude stem Compotes (amethyst, dark emerald, crown tuscan w/ gold, carmen)
Nude stemware (royal blue, ebony, forest green; amethyst, amber, crystal, mandarin bowl w/ tuscan stem)
Figural flower centers to include: Draped Lady (peach blow, light emerald, satin, crystal), Bashful Charlotte (cinnamon), Mandolin Lady (light emerald), Two Kid (light emerald, peach blo), Rose Lady (amber)
Console sets (jade, azurite w/ gold, ebony, helio, amber)
Baskets (amber, peach blo, forest green, amethyst, ebony, smoke, gold krystol, dark emerald, pistachio)
Decanter sets w/ glasses; children's dishes
Vases - assorted sizes (pearl mist, cinnamon, forest green, amber, carmen, royal blue, crown tuscan, helio, ivory, primrose, crystal)
Candlesticks - pairs & singles (ritz blue, jade, primrose, rubina mulberry, amber, helio, ebony)
Perfume Bottles & Dresser Boxes (amethyst, cobalt, amber, mocha, azurite, royal blue, light emerald, peach blo, azurite, jade, primrose)
Misc: Ashtray w/ cockatoo; Ashtray w/ lighthouse; nice assortment of Crown Tuscan pieces; Rubina bowls & compotes; crystal candlecenters w/ nappies & vases; Heatherbloom ball jug, creamer & sugar, cup & saucer; milk glass rolling pin; Mulberry "Guest Set"; Azurite perfume lamp; Azurite bowls, candy dishes, vases; crystal Desicator; Carnival green berry bowls; Carnival green cracker jar; "Yardley" jars; crystal bells; Decanter sets (amber, amethyst); etchings on pieces include: Rosepoint, Blossomtime, Wildflower, Elaine, Chantilly, Hunt Scene, Cleo, etc.)

Over 400 lots of quality Cambridge items!

Watch our web site for upcoming catalog with photos.

Adventureland Inn will be providing a block of rooms available to those attending the auction at a special reduced rate. These rooms will be available for reservation after September 14th, just mention "Mauk Antique Auction" to receive this special rate.

Sale conducted by:
Mauk Auctions & Sales
Marty Mauk, Auctioneer, 515-263-9396
Adam Curl, Auctioneer, 515-771-4434
www.maukauctions.com

Study Group Reports

The NCC has several study groups; these are the groups currently active and holding regular meetings. Listed below is contact information for these study groups.

If there is no study group in your area and you are interested in starting or joining a new study group, please contact NCC Study Group Advisor, Judy Rhoads at kjrhoads@aol.com.

#13 - Miami Valley Study Group
Miami Valley area, Ohio
Larry Everett
db0098@dragonbbs.com
(937) 675-6491

#14 - The Cambridge Cordials
Cambridge, Ohio
Lorraine Weinman
blweinman@hotmail.com
(330) 966-9376

#15 - North Texas Cambridge Study Group
Dallas area, Texas
Scott Pierce
scottpierce1@msn.com
(817) 427-9510

#16 - Elegant Glass Collectors
PA & NJ
Bill Dufft
billnvon@aol.com

#17 - The Columbus Wildflowers
Columbus, Ohio
Barbara Wyrick
bwyr@ee.net
(614) 291-0361

#20 - South Florida Study Group
Miami, FL
Linda Gilbert
rosepointbabe@aol.com

North Texas

On April 30th, members of the North Texas Cambridge Study Group met at Diane and Dan Shimer's for our April meeting. As you noticed, we rotate our meetings among member's homes. This helps rotate the hosting responsibilities, while varying the amount that people have to drive for a meeting. Sometimes the meetings will be close to home, and other times, it could be on the other side of the Dallas/Fort Worth area. Of course, it also gives the members a chance to see other collections.

Several people attended the San Antonio show in February, but we did not have a meeting there. The Dallas Metroplex glass show was held in March, with several people enjoying a good meal of Texas BBQ while discussing their finds from the show.

The topic for the April meeting was provided by the Miami Valley Study Group. We thank them for recording their two programs on "Tumblers" and making them available on DVD. We used Webster's Definition: "A glass with a flat bottom but no handle or stem; originally had a round bottom." We had over 40 unique tumblers on display to augment the program. One unanswered topic was the terminology of "footed tumbler" – something we will pursue later.

We concluded with "Show and Tell." The finds included: caprice brochure, both Cambridge and Summit Caprice tumblers, Caprice #310 blown tumbler, light emerald Martha individual cream and sugar with tray, Corinth oval 12" bowl, and #3035 amber stem with gold krystal bowl etched Apple Blossom.

The May meeting will be held jointly with the Fostoria Glass Society of North Texas to prepare for the July NDGA show. The summer will be busy with several events so everyone can find special things and be ready for the September meeting.

Submitted by Freeman Moore



Our meeting of May 21st was held at the home of Donna and Bert Kennedy in Mesquite TX. This was a combined meeting with the Fostoria Glass Society of North Texas. Our two clubs are co-hosting the National Depression Glass Association (NDGA) annual show and convention this July. Everyone was asked to come early for the hot-dog and hamburger cookout before the meeting. Surprisingly enough, everyone arrived before time for the food before the meeting.

We took care of the Fostoria club business first and then finalized details regarding the club booth at NDGA.

Under Cambridge business, Scott Pierce had received an email asking about yellow everglade. We didn't know the answer during the meeting. Thanks to material from the NCC 2001 convention, we emailed back the information that topaz everglade was made.

Donna Kennedy had prepared a program on Cambridge Azurite. She had numerous pieces with gold borders as well as some plain pieces. She pointed out the age of pieces as well as the variations in the border etchings. Thanks for a very informative program!

We concluded with "Show and Tell." The finds included: mandarin gold 1066 goblet with cutting, Mount Vernon heatherbloom compote, crystal Caprice #310 5 oz tumbler, Willow Blue Decagon #867 creamer & sugar possibly with Commodore cutting, Light Emerald Plainware #134 creamer & sugar possibly with #4079 or #4050 cutting, Crystal 6 pc (2 with lids) Child's Toy Set, 2 signed Near Cut, and a Fostoria Century cream and sugar set.

We're ready for NDGA!

Submitted by Freeman Moore



Q&A



Ken Nicol, NCC member from Columbus, sent in these photos of a lovely decanter, and writes...

I know Cambridge & Paden City made a similar samovar in the 20's & at one time I thought they also made this similar decanter or am I mistaken? The etching looks a bit like Martha or Wild Grape & is far different from the Paden City etch. Thanks for any information.

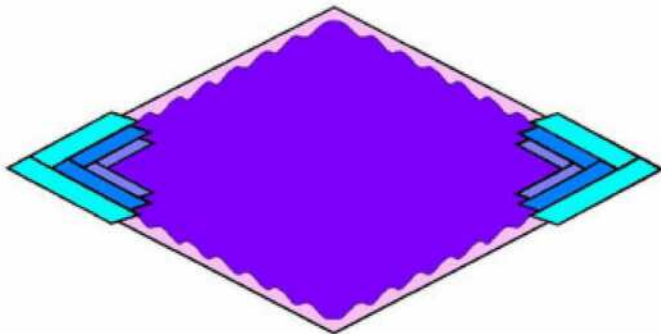
Les Hansen responds:

I believe Lynn Welker has given the Cambridge "blessing" to items with this blank and the Grape etching.

I also checked with Frank Wollenhaupt, and he told me, "I do believe that these are Cambridge. I think if you look up the grape etching you should be able to find it in the etching book. The person who has a collection of these and could probably answer it would be Rick Jones."

So, I suggest you check with Rick on this. He might have done all the necessary research to verify that this decanter was indeed made by Cambridge. I'm pretty confident that it is, but I'm not an expert on these.

Rick Jones adds:
Definitely Cambridge!



Bostwick Auctions

ANTIQUUE ESTATES AUCTION

Sunday, September 3rd @ 9:30 am
1121 Route 96 • Candor, NY 13743

Over 1,200 individual lots of furniture, smalls (including a collection of Cambridge Glass), toys, lighting, china and accessories

Partial List of Cambridge Glass: Swan Punch Bowl Set; 13" Ebony, Peach Blo & Crystal Swans; (2) 10" Pearl Mist Swans - types I & III; 8.5" Willow Blue Swan; many more Swans; several Lamps; Amethyst Keg Set; Gadroon 12" Urn; Etched & Decorated Console Sets; 6 pc. Cigarette Set; plates, tumblers, stemware, Rosepoint; Caprice; Perfumes; Flower Blocks; Creamers & Sugars; Candleabra; Cambridge Books; Crystal Ball back issues; etc.

To see hundreds of photos, and for daily information, go to www.bostwickauctions.com

2 Auctioneers at once, so bring a friend!

Delivery Available • Families welcome • Preview at 8:00 am

If you cannot attend in person, call us for absentee bid information • Shipping is available

TERMS: Cash, check, credit card • NO BUYER'S PREMIUM

Auctioneer: Laurie Bostwick
(607) 659-4842

NUDES

- May 25th witnessed the sale of a gorgeous #3011 nude-stemmed crystal cupped comport with Minerva etching. Absolutely stunning. It sold for \$875.
- A flying nude lady bowl in crystal satin sold for \$676 on 6/10. It had a clear crystal foot and the inside of the bowl was also clear, not satinized. Gorgeous.



- On June 27th, a beautiful #3011 nude-stemmed cocktail in Crown Tuscan with a Royal Blue Bowl sold for \$450.
- AND, on 7/2, another #3011 nude-stemmed cocktail in Crown Tuscan but this time with an amethyst bowl, sold for \$400.
- Remarkably, also on 7/2 yet another fabulous #3011 nude-stemmed cocktail in Crown Tuscan and this time with a Forest Green bowl, sold for \$350.
- A fabulous #3011/29 nude-stemmed mint dish in amber sold for \$647. Very elusive.

CAPRICE

- Sadly, on June 9, a rare amethyst Caprice Doulton jug did not sell. It started at an opening bid of \$500 with the reserve not met. It wasn't the elegant, high-handled version of the Doulton jug like that which is seen in the crystal and Moonlight Blue versions.
- On 7/13 a beautiful 12" Caprice #26 plate in Pistachio sold for \$66. There was a small chip on one of the feet.
- July 3rd saw a fabulous sale of a #201 Moonlight Blue Caprice ice bucket and bail for \$185.



FLOWER FROGS

- On July 12th, a beautiful 8" draped lady flower frog in pink sold for \$250.
- A beautiful amber rose lady flower frog sold on July 3rd for \$138. Bargain!

SWANS

- May 19th saw the sale of what appeared to be a 6" swan in Ebony with heavy silver overlay on most of the swan save for an area on each wing, the back and inside as well as the underside. It sold for a stunning \$629.
- On June 4th, a very rare 10" Crown Tuscan swan sold for \$885. It had a small flake on one foot.
- On 7/12 a beautiful 10" amber swan sold for \$482.

ROSEPOINT

- On 7/11 a stunning pair of #1305 Crown Tuscan and gold-encrusted Rosepoint keyhole vases sold for \$703. There appeared to be nearly total gold loss on the top rims of each vase.
- On 7/4, a beautiful #119 basket etched Rosepoint did not meet reserve at \$356.
- July 3rd saw the sale of a set of 6 Rosepoint #3500 cordials for \$360.
- A #3400/96 Rosepoint 3-piece oil & vinegar set sold for \$332. A gorgeous set with the little keyhole stoppers.

OTHER ETCHINGS

- On 7/5, a most magnificent #3400/38 ball jug as 6 matching ball tumblers with Wildflower etching and gold trim sold for \$480.
- Also on 7/5, an extremely rare #3400/4 Ebony bowl with gold-encrusted Gloria sold for \$556.



- A fabulous #3400/92 ball decanter in amber with gold-encrusted Diane and a crystal stopper sold on 5/16 for \$304.
- A fabulous pair of #1402 Tally-ho clarets with Royal Blue bowls and elusive Yukon etching sold on 7/13 for \$100 each. These were on separate auctions by the same seller. Gorgeous.
- An absolutely stunning #3400/38 ball jug in crystal with gold-encrusted Portia etching sold on 7/13 for \$294.
- Jaw-dropping is the only description for the most beautiful vase that was sold on 7/11 (pictured at right). It was a #1309 Crown Tuscan vase with gold-encrusted Candlelight etching. Selling for \$203.

- July 12th saw the sale of a fabulous rarely seen #3143/26 gyro-optic flip vase in Rose Du Barry with gold-encrusted Imperial Hunt Scene for \$202. Gorgeous.



MISCELLANEOUS

- On July 6th, a pair of #648 multi-sided one-light keyhole candleholders in Royal Blue with gold trim and gold silk-screened blossom design sold for \$204. Gorgeous.



- A marvelous #9403 flat-bottomed tumbler in crystal with the red and black enameled decoration of 3 canny scots sold for \$153. on 7/12. Too fabulous.



Speaking of Stems!

by Georgia G. Otten

What? Another convention is now, as they say, "history!" Hard to believe we wait all year for the event and now Convention 2006 is part of our Cambridge memories. It was a wonderful convention and moved along quite smoothly. All events seemed to be well attended.

One event, which is not on the official convention schedule, is the "Goblet Check." This event occurs the night of the banquet when a volunteer table-hops with pen and paper in hand, to list the goblets brought in by attendees. As has been the custom for many years, these goblets are used for beverage of choice for the evening. There is always a grand assortment of stems. This year was no exception as there were 58 stems on the table.....not the *same* table of course.

It is a fun event for the 'goblet-checker,' who this year decided to impose a penalty if a person could not identify his or her own stem! "Pretty," "Elegant," "Wonderful," and "Gorgeous," did not qualify as a valid Cambridge stem ID.....even though those are synonymous with Cambridge glass. Nice try! Let's see, what would be a fair consequence? Confiscate the stem? Refuse that person the right to their beverage? That not only brought giggles from the goblet-holders but also a concerted effort at the table to help with the ID for those who did not know. No stems were confiscated and no one lost their drinking privilege. The 'checker' moved to the next table.

While going from table to table, the Goblet-Checker made a mental note of the person who brought in a goblet that would most definitely qualify for the "Most Beverage for the Buck Award," if one were to be given, that is! You know who you are, as only one person brought in a rather impressive EIGHTEEN OUNCE Tally-Ho goblet.....cheers!

I am hopeful that one of you will accept the position of "Goblet-Checker" a the next convention. It is a great opportunity for some fun as you go around the room meeting new people and learning more about Cambridge stems. Remember next year, whether you are the goblet-holder or the goblet-checker...

...bring in that stem
...come prepared
...know your stem!



Georgia Otten's Banquet Stem #3035, Amethyst w/ Crystal Stem and Foot

QTY	Number	Item
1	1	Pristine Goblet with Gold edge
1	9	Caprice 10 oz. Ftd Tumbler Moonlight
2	26	Pristine 12 oz. Ftd Ice tea with Firenze etching
1	300	Caprice 10 oz. Ftd Tumbler Moonlight
1	1066	11 oz. Goblet with Royal Blue bowl
2	1402	Goblet Royal Blue, frosted with a lines etching perhaps, Yukon?
2	1402	Goblet Carmen bowl with gold D/1007
1	1402	Goblet Carmen bowl
1	1402	18 oz. Goblet Forest Green
2	3011	Table Goblet with Carmen bowl
2	3025	10 oz. Ftd tumbler etched Gloria
1	3035	9 oz. Goblet with Amethyst bowl
2	3035	10 oz. Footed tumbler etched Elaine
1	3035	9 oz. Goblet Heatherbloom bowl and Apple Blossom etching
1	3075	9 oz. Goblet Peach-blo bowl with Lt. Emerald stem; Hunt Scene
1	3077	12 oz. Ftd. Tumbler Blue Bell
1	3077	9 oz. Goblet Light Emerald
1	3085	1 1/2 oz. Cocktail Light emerald with Hunt Scene etching
1	3095	Goblet all Peach-blo with etching #520
1	3115	9 oz. Goblet Lt. Emerald bowl with Rosalie etching
2	3116	10 oz. Goblet cut Lucia
1	3121	10 oz. Goblet etched Portia
4	3121	10 oz. Goblet etched Rose Point
1	3122	9 oz. Goblet Amber bowl with Diane etching
1	3123	9 oz. Goblet Aero Optic with Rosalie etching
1	3125	Deauville Goblet with Gold Krystal bowl and Deauville etching
2	3130	10 oz. Footed tumbler, crystal with ebony foot. Etched Gloria
1	3130	9 oz. Goblet all Gold Krystal with Apple Blossom etching
1	3132	10 oz. Goblet with Neo-Classic cutting
2	3134	10 oz. Goblet cut Mansard
1	3138	9 oz. Goblet with cutting
2	3500	10 oz. Goblet short bowl Cut Croesus
2	3500	10 oz Goblet cut Achilles
1	3500	3 oz. Cocktail with Royal Blue bowl
1	3500	10 oz. Goblet short bowl Rose Point with gold edge D/1041
1	3750	10 oz. Goblet with Harvest cutting
1	3777	7 oz. Tall Sherbet cut Melody
1	3778	10 oz. Goblet cut Larchmont
1	3779	9 oz. Low goblet etched Daffodil
2	7606	10 oz. Goblet etched Marjorie
1	7967	Melody low goblet
2	Unknown	10 oz. Goblets with Tangerine color bowl
58		TOTAL

CONVENTION 2006 IN PICTURES



Les Hansen, Mike Nielsen and Deen Warren at the poolside picnic.



Convention Chair, Shelley Cole serving cookies to Greg Vass, Doug Ingraham and Jeannie Moore.



The Pool Party kicks off Convention 2006

The Annual Banquet; 130 NCC members selected Chicken or Salmon while catching up with friends! It was a lovely meal, catered by Classic Fare of New Concord, OH.





Finalists in the first Cambridge Glass Art Competition; students from grades five and six at Brook Elementary School created artworks inspired by Cambridge Glass. The Collectors' Trophy was awarded to fifth-grader Kyle Dolan of Cambridge (at right end of back row).



Bob & Karen Gallagher's granddaughter, Jordyan, was the star of the 2006 Convention, making friends with nearly every one of the over 170 attendees. The newest Cambridge collector, Jordyan acquired three Light Emerald stems.



Jeannie Moore (Flower Mound, TX) was named the winner of the 2006 Phyllis Smith Award, for outstanding volunteerism.



Former NCC President and current Glass Show Co-Chair, Joy McFadden, was honored with a Lifetime Membership. Joy has attended ALL 33 NCC Conventions! Above, NCC President Ken Filippini presents Joy with her award.



A sea of Elegant Glass greeted the show attendees. The Berry/Russell family of Flint, Michigan, were once again first in line, but there was plenty of beautiful glass even for those further back in the pack!



Conventioners ready to "Dash Thru The Past" at the museum. The educational program, originally developed for local students, was a tremendous hit in its Convention debut.



The Mini Auction, revived this year in memory of Willard Kolb, raised over \$6,000 for the NCC. Alex Citron (r), was Auctioneer, aided by runners Ralph Warne (pictured), Ron Pfouts and Shelley Cole.



Mac and Georgia Otten (Dayton, OH) celebrate at the Annual Banquet.

Cambridge Glass For Sale

Davie Lou Solka

501 Bermuda Pl.

Corpus Christi, TX 78411

361-852-5815

fax: 361-852-5211

Bexley Cordial (4) each set of 2	50.00
Candlelight 7 ¼" plate (7)	all for 90.00
Candlelight 3900/54 10" ftd. Bowl.....	75.00
Caprice sugar & cream, clear	set 40.00
Chantilly 3600 2 ½ oz cocktail (3)	all for 60.00
Chantilly 3779 water (2)	both for 50.00
Chantilly cream (2)	each 20.50
Chantilly 7 ½" plate (12)	6 for 100.00
Chantilly 3900/1177 salt with lid.....	20.00
Corinth cup & saucer (20)	4 sets @ 60.00
Daffodil Double candlestick (1)	50.00
Granada 3 oz. Cocktail (6).....	all for 60.00
Laurel Wreath 3139 sherbet (2)	both for 25.00
Laurel Wreath 3139 claret (2)	both for 45.00
Laurel Wreath Double Candlestick	pair 75.00
Radiant Rose 7 ¼" plate (6).....	all for 45.00
Rosepoint 3500 8" plate (8).....	all for 95.00
Rosepoint 3900 8" plate (14).....	each 15.00
Rosepoint 3900/41 sugar	20.00
Rosepoint 3900/40 cream	20.00
Rosepoint 3500/15 ind. cream & sugar	set 40.00
Rosepoint 3500/15 ind. sugar	20.00
Rosepoint 3500 sugar & cream.....	set 45.00
Rosepoint 3500 sugar (2).....	each 20.00
Wildflower 7 ½" plate (7).....	all for 75.00
Wildflower 8" plate (10).....	all for 100.00

Original Cambridge individual illustrated price sheets:

Bexley • Bijou • Caprice • Corinth • Harvest

Laurel Wreath • Lynbrook • Magnolia

Mix & match, minimum of 5..... each 0.25

Original 1950's Cambridge Catalogue

pages for 3-ring binder
 50.00 |

Original 1958 Cambridge Price list book
 25.00 |

Original Cambridge Price list book 3/15/56
 25.00 |

••• shipping additional •••

The Calendar

NCC Events

August Quarterly Meeting
Saturday, Aug. 19
12:00 Noon at Theo's

November Quarterly Meeting
& Educational Program
Saturday, November 4

If you know about any upcoming glass shows or other glass events, please pass the word on to us at least six to eight weeks before the show dates. These listings are free of charge.



The Latest Merchandise

Logo Patch



This attractive, embroidered Cambridge Logo Patch is now available from the Elegant Study Group. It measures 2" by 3.5" and can be ironed or sewn onto almost any fabric. Proceeds benefit the NCC.

\$5 each ●

**See Page 16
to Order
by Mail**

Upcoming Glass Shows & Other Glass Events

August 5-6:
Chicagoland DG Show & Sale
Wheaton, IL
Call: (618) 259-5059

August 12-13:
White Plains DG & China Show
--- CANCELLED ---

August 19-20:
Houston Festival of Glass
Rosenberg, TX
Call: (281) 342-4876
www.houstonglassclub.org

August 25-27:
Milwaukee DG Show
Milwaukee, WI
Call: (414) 573-7550

September 2-3:
Hoosierland DG Show
Noblesville, IN
Call: (618) 259-5059
E-mail: tuckant@charter.net

September 15-17:
Sanlando D.E. Glass Show
Sanford, FL
Call: (407) 298-3355
E-mail: milliesglass@webtv.net

September 16-17:
Rochester Glass Show
Rochester, NY
Call: (585)-544-3315
www.dgcrochester.org

September 23-24:
Pikes Peak DG Club Show
Colorado Springs, CO
www.ppdgc.com

October 6-7:
Heart of America Glass Show
Independence, MO
Call: (816) 561-4439
E-mail: dishbizz@aol.com

Collectors of Carnival Glass

Mark your calendars now!

Tampa Bay Carnival Glass 25th Convention

January 31 - February 3, 2007
Lakeland, Florida

For information, call
Janet Knechtel at (705) 377-4814
or (863) 993-2387 [winter months]
or e-mail janetkn@amtelecom.net

**"Primrose"
Prism Sign**
2006 Convention Favor

\$15 each ●



Educational DVD's by the Miami Valley Study Group



• **Cambridge Glass & All That Jazz**
Presented at the 2004 NCC Convention;
it covers Cambridge Glass patented, introduced or featured in the years 1925 thru 1930. Runs 26 minutes. **\$13.00 ●**

• **Cambridge Glass: Ladies and All**
Presented at the 2006 NCC Convention;
covers the years 1931 and 1932. Runs 38 minutes. **\$18.00 ●**

• **Special: Both DVD's for one low price**
\$29.00 ●

Book and Merchandise Sales thru the NCC Website are back on-line. To order, just click on the blue dot by each item, or on the name of each book.

NCC Merchandise

Scotty Dog Bookends



\$112/pair
Cobalt Blue ● or
Emerald Green ●
 includes shipping

Cat's Meow Collectible



\$20 each ●

Vaseline Prism Sign

2005 Convention Favor



\$15 each ●

Salt & Pepper Tops

Polycarbonate plastic will fit most Cambridge shakers, such as Rosepoint footed and flat-bottom shakers. They also fit Heisey Rose, Saturn, Plantation, Crystalite and some Orchid. Fit some Anchor-Hocking and Candlewick.



\$6/pair ●

Order 10 pair (or more) and pay only \$5 per pair. to order 10 pair.....●

NCC Logo Pin



\$5 each ●

Comemmorative Tape Measure

Issued for the Grand Opening of the National Museum of Cambridge Glass



Special...\$1 each ●

Factory Map and Elevation

Reproduced from the original, which hangs in the NCC Museum



\$12.50 each ●

NCC Videos "The Crystal Lady"

Copy of an original Cambridge Glass promotional film; shows the manufacture of a goblet. ●

"The Grand Opening"

A quality video record of the opening of the National Museum of Cambridge Glass in 2002. ●

\$15 each

NCC Merchandise is available thru the NCC website, where you may use your credit card. Just click on the blue dots.

Send orders to:
 NCC • PO Box 416 • Cambridge, OH 43725

OHIO RESIDENTS PLEASE ADD 7% SALES TAX

Please include your name, complete mailing address and your phone number or e-mail address. Payments by check or Money Order only, payable to NCC

How to Order by Mail

SHIPPING/HANDLING:

All items (including books) **except** Scottys:

Total order up to \$6	\$1.50
\$6.01 to \$25.00	\$4.50
\$25.01 to \$50.00	\$5.50
\$50.01 to \$75.00	\$6.50
Over \$75.00	\$8.50

Books for Sale

Published by NCC • Members receive a 10% discount • CLICK ON BOOK TITLE TO ORDER THRU NCC WEBSITE

TITLE		REGULAR PRICE	MEMBER PRICE
1910 NearCut Catalog Reprint	108 pages, paperback with 2004 price guide	\$14.95	\$13.45
NearCut Value Guide	(when purchased separately)	\$3.00	\$2.70
1930-34 Catalog Reprint	250 pages, paperback with 1997 price guide	\$14.95	\$13.45
1930-34 Catalog Index		\$2.00	\$1.80
1949-53 Catalog Reprint	JUST RE-ISSUED	\$19.95	\$17.95
1956-58 Catalog Reprint	160 pages, paperback, no price guide	\$12.95	\$11.65
Caprice	200 pages, paperback with 2003 price guide	\$19.95	\$17.95
Caprice Value Guide	(when purchased separately)	\$5.00	\$4.50
Decorates	136 pages, paperback, no price guide	\$14.95	\$13.45
Etchings	OUT OF PRINT • NEW EDITION TO BE PUBLISHED SOON		
Etchings, Non-Catalogued	70 pages, paperback, no price guide	\$12.95	\$11.65
Etchings: Blossomtime	26 pages, paperback, no price guide	\$7.95	\$7.15
Etchings: Candlelight	30 pages, paperback, no price guide	\$7.95	\$7.15
Etchings: Chantilly	44 pages, paperback, no price guide	\$7.95	\$7.15
Etchings: Diane	53 pages, paperback, no price guide	\$7.95	\$7.15
Etchings: Elaine	64 pages, paperback, no price guide	\$9.95	\$8.95
Etchings: Portia	57 pages, paperback, no price guide	\$7.95	\$7.15
Etchings: Wildflower	42 pages, paperback, no price guide	\$7.95	\$7.15
Rock Crystal Engravings	119 pages, paperback, no price guide	\$17.95	\$16.15
Rock Crystal Engravings (Listings)	(Companion to above; lists all pieces in all patterns)	\$9.95	\$8.95
Rock Crystal 1940 Price List		\$14.95	\$13.45
Rosepoint	94 pages, paperback with 2004 price guide	\$14.95	\$13.45
Rosepoint Value Guide	(when purchased separately)	\$5.00	\$4.50

Other Publications • No discounts:

TITLE	REGULAR PRICE
Glass Candlesticks: Volume I - Akro Agate thru Fenton	\$24.95
Glass Candlesticks: Volume II - Fostoria thru Jefferson	\$24.95
Glass Candlesticks: Volume III - Kanawha thru Wright.....	\$29.95
Charleton Decorations	\$29.95
1903 Cambridge Catalog Reprint	\$6.00
1927-29 Cambridge Catalog Reprint (with 1996 Price Guide)	\$9.95
1927-29 Value Guide (when purchased separately)	\$3.00
1940 Cambridge Catalog Reprint (unbound, on 3-hole paper).....	\$25.00
Binder for 1940 Catalog	\$5.00
Reflections: A History of Guernsey County Glass Production	\$5.00
Cambridge Stemware by Mark Nye.....	\$19.95
Welker's Volume II (color plates showing pieces from private collection)	\$5.95
The Art of Making Fine Glassware.....	\$4.00
Glass Animals (2nd Edition)	\$24.95
Kitchen Glassware of the Depression Era (6th Edition) by Gene Florence.....	\$24.95
Collectible Glassware from the 40's, 50's & 60's (7th Edition) by Gene Florence	\$24.95
Treasures of Very Rare Depression-Era Glass by Gene Florence.....	\$39.95
Elegant Glassware of the Depression Era (11th edition) by Gene Florence	\$24.95

How to Order by Mail

<p>Send orders to: NCC • PO Box 416 • Cambridge, OH 43725</p> <p>OHIO RESIDENTS PLEASE ADD 7% SALES TAX</p> <p>Please include your name, complete mailing address and your phone number or e-mail address.</p> <p>Payments by check or Money Order only, payable to NCC</p>	<p style="text-align: center;">SHIPPING/HANDLING RATES ON PAGE 16</p> <p><i>Books may also be purchased on the NCC website, in the Members-Only Section. Major Credit Cards are accepted only on web purchases.</i></p> <p><i>See page 2 for address, user name and password.</i></p>
---	---



Stems Without Thorns

As the world's largest supplier of old & new china, crystal, silver and collectibles, Replacements, Ltd. has more than 700 different patterns of Cambridge crystal.

And however much we enjoy selling pieces that were once thought irreplaceable, we love buying them as well. Thanks to people like you, our crystal inventory currently numbers in the hundreds of thousands, and the numbers keep growing every year.

So, if you've been unsuccessfully searching for that elusive piece of Cambridge - or any other type of fine crystal - call us for a free list of pieces available in your pattern. And, if you're looking to sell pieces you currently have, we can help you there, too.

REPLACEMENTS, LTD.

China, Crystal & Silver • Old & New

1-800-REPLACE
(1-800-737-5223)

1089 Knox Road
PO Box 26029, Dept. CB
Greensboro, NC 27420
www.replacements.com



CLASSIFIED ADS

FOR SALE... Cambridge Rosepoint dessert plates, cups and saucers. Call (320) 679-3164

BUY, SELL, FILL OUT A SET...
your ad can run here for as little as \$2. Reach over 1,000 avid collectors of Cambridge Glass. See page 3 for details.

or e-mail NCCCrystalBall@aol.com

DEALER DIRECTORY

THE DEGENHART PAPERWEIGHT AND GLASS MUSEUM, INC.

P.O. Box 186
Cambridge, OH 43725-0186
Intersection of US 22 & I-77
Phone 740-432-2626

Cherished Collectibles

Shopping 24 hours in our online store
Glassware, Figurines, Collectors' Plates
www.tias.com/stores/chercoll/
cher@cherished-collectibles.com
Elegant and Depression Era Glass

Dee and Tony Mondloch
Phone: 850-747-8290 glass01@knology.net
1609 Clay Ave. Panama City, FL 32405

Precious & Few

Tiffin and Duncan & Miller Glassware,
Other Elegant Glass, Antiques, Collectibles
Shop: www.apreciousfew.com

YOUR AD COULD BE HERE
REACH THOUSANDS OF COLLECTORS
ONLY \$24 PER YEAR
SEE PAGE 3

GREEN ACRES FARM

2678 Hazelton Etna Rd.
Pataskala, OH 43062
(State Route 310 North)

Sat & Sun 1-7 pm 740-927-1882
Antiques, Crystal Glass & Collectibles

THE GLASS URN

456 West Main Street, suite G
Mesa, AZ 85201 480-833-2702
480-838-5936

Mail Order Open Shop

CAMBRIDGE, FOSTORIA, HEISEY, etc.

Fostoria Glass Society of America
Traveling Ambassadors
Ralph & Joyce Rider

For info: 817-545-5856
E-mail: r.rider@sbcglobal.net

John **Burlingame** Betty
Visit our booth (B-6) in
DELILAH'S

301 1st Street Sanford, FL 32771
Antiques, glass, pottery, collectibles, etc.
cell 386-212-7121 tel 407-330-2272

YOUR AD COULD BE HERE
REACH THOUSANDS OF COLLECTORS
ONLY \$24 PER YEAR
SEE PAGE 3

VIRTUALATTIC AT THE GLASS CHALET

SPECIALIZING IN ELEGANT DEPRESSION ERA GLASS

PO Box 3448
Clebume TX 76033-3448
Sandra L. Bridwell-Walker
William P. Walker
Phone: 817-202-0840
Sandy's Cell: 817-559-0328
Bill's Cell: 817-357-7084
www.virtualattic.com
virtualattic@sbcglobal.net
theglasschalet@sbcglobal.net



John & Peggy Scott
Scotland Ridge Farm
PO Box 1001
Aurora, MO 65605

SCOTTY'S ANTIQUES

Elegant Glassware of the Depression Era
Maidly Cambridge and Florence Ceramics
Retirement. Selling all inventory
at reduced prices

(417) 678-0624
scottjagg@aol.com

Remember...

When writing to these dealers,
please include a self-
addressed, stamped envelope.

DEALER DIRECTORY

When writing to these dealers, please enclose SASE

CLICK ON ANY BLUE DEALER AD TO BE TAKEN DIRECTLY TO THAT DEALER'S E-MAIL OR WEBSITE

DAUGHERTY'S ANTIQUES
Jerry and Shirley
Antiques and Collectibles • Mostly Glass
www.daughertys-antiques.com
e-mail: sdaugh2515@daughertys-antiques.com
Shows & Mail Orders 2515 Cheshire North
(402) 423-7426 evenings Lincoln NE 68512

Milbra's Crystal Buy & Sell
Replacement and Matching
Milbra Long (817) 645-6066
Emily Seate (817) 294-9837
PO Box 784
Cleburne TX 76033
E-mail: longseat@sbcglobal.net
www.fostoriacrystal.com
Specializing in Cambridge, Fostoria, Heisey and others

BARNESVILLE ANTIQUE MALL
open 7 days, 8 - 5
Nancy and Brian Mayhugh
Owners
202 N. Chestnut St. 740-425-2435
Barnesville, Ohio 43713 3 floors
EXIT 202 OFF I-70 • always buying & selling antiques

ALADDIN LAMP BOOKS
Free History of Aladdin Lamps
Figurine Lamps Wanted
Bill & Treva Courter
brtknight@aol.com
3935 Kelley Rd. Phone 270-488-2116
Kevil, KY 42053 FAX 270-488-2116

Max Miller
Elegant Glassware • Books • Fiesta
...and more
THE MARKET PLACE
(713) 467-0450 - BUS 10910 OLD KATY RD.
(713) 461-1708 - RES HOUSTON TX 77043
MMXGLASS@aol.com

B&H ANTIQUE MARKETPLACE
3739 Highway 29 North
Danville, VA 24540
(434) 836-4636
www.bhantiqueauctions.com
Cambridge • Heisey • Duncan • Fostoria
Open Thur - Sat 11:00 to 5:00 (seasonal hours apply)

Glass Menagerie Antiques
Your Website for quality Glass from
the 20's, 30's, 40's & 50's.
www.glasstresurechest.com

BAKER FAMILY MUSEUM
805 CUMBERLAND ST.
CALDWELL, OHIO 43724
740- 732-6410
bakermuseumnellbaker@msn.com
Wed & Thurs 9-4; Fri - Sat 9-5

CRYSTALLINE COLORS
Cambridge • Fostoria • Elegant Glass
Riverfront Antique Mall
New Phialdelphia, OH (I-77, exit 81)
Booth #'s 626 and 616
Lynne R. Franks 216-661-7382

CRYSTAL LADY
Thurs. - Sat. 11-5
1817 Vinton St. Omaha, NE 68108
Bill, Joann and Marcie Hagerty
Shop 402-341-0643 Home 402-391-6730
Specializing in Elegant Glass & Collectibles
www.crystalladyantiques.com

Storck's Antiques
Rick & Joyce
Antiques & Collectibles • Glass & Pottery
Specializing in Fenton, Imperial & Cambridge
Shows & Mail Orders • Storck1@aol.com
Greenfield, MN 55373 • (763) 477-6415

 **Mother Drucker's**
Penny Drucker
Specializing in Elegant Glassware
Shows & Mail Order
PO Box 50261 (949) 551-5529
Irvine, CA 29619 (888) MDRUCKER
www.motherdruckers.com

Deborah Maggard, Antiques
Specializing in Cambridge Glass,
American Hand-Made Glass & Victorian Art Glass
We buy one piece or entire collections.
Please contact me at 440-247-5632
debbie@deborahmaggardantiques.com
P.O. Box 211 • Chagrin Falls, OH 44022

GLASS FROM THE PAST
Maureen Gillis

www.glassfromthepast.com
email: maureen@glassfromthepast.com

JUDY'S ANTIQUES
Judy Bennett
422 S. Ninth Street (corner of Jefferson)
Cambridge, Ohio 43725
Business (740) 432-5855
Residence (740) 432-3045
CAMBRIDGE GLASS MY SPECIALTY

BRIDGES THRU TIME
Antiques & Elegant Glassware & Collectibles
Member of Greater Houston BBB
Located at Olde Carriage Shoppe
810 2nd Street • Rosenberg, TX 77471
For Web-Storefront and Auctions
Website: <http://www.bridgesthruetime.com>
E-mail: imwolf@sbcglobal.net

Mon. thru Sat. 10 - 5:30 • Sunday 12 - 5:30
Bogarts' Antiques
BUY • SELL • APPRIASE • REFINISH • CANE & REED CHAIRS
CLOCK REPAIR
Jack & Sharon Bogart ST. RT. 40
740-872-3514 shop 7527 EAST PIKE
740-826-7439 home NORWICH, OHIO 43767
BOGARTSANTIQUES@CORE.COM

 **Mary Jane's Antiques**
Early American Pattern Glass
Depression Era Items
2653 Burgener Drive (217) 422-5453
Decatur, IL 62521 mjhumes@aol.com

THE GLASS HOUSE ANTIQUE MALL
Furniture, Pottery, Glass
Antiques and Collectibles
I-70 Exit 146, East on SR 40
8825 E. Pike
Norwich OH 43767 TEL 740-872-3799

GATEWAY ANTIQUE MALL, INC.
JUST NW OF MINNEAPOLIS-ST. PAUL, MN
Next to Super 8 in Rogers, MN
(I-94/101 intersection)
Multi-Dealer
7 days; 10am - 6pm • 763-428-8286
ELAINE STORCK, OWNER/DIRECTOR

ISAACS ANTIQUES
(740) 826-4015
See our booths in Penny Court Mall in
Cambridge and at White Pillars Antique Mall
(Route 40, one mile west of
I-70 Norwich, OH • Exit #164)

PENNY COURT MALL
637 Wheeling Avenue
Cambridge, Ohio
100 Booths 15,000 sq ft
HOURS: Daily 10-6 Sunday Noon-5
Closed: Easter, Thanksgiving, Christmas
Call for other holiday hours 740-432-4369

MARGARET LANE ANTIQUES
2 E. Main St. New Concord, OH 43762
Lynn Welker (740) 826-7414
Cambridge Glass Matching Service
Hours: Mon-Fri 10-12 AM, 1-5 PM
or by appointment

 **Our House Antiques**
Linda & David Adams
Las Vegas, NV
702-838-1341 or
800-357-7169
Web: www.OurHouseAntiques.com
E-mail: David@OurHouseAntiques.com

Glass Exhibition Coming to Ohio Museum

NCC Board Member Lorraine Weinman sent in a flyer for what looks to be a fascinating and worthwhile exhibition of pottery and glass, just a short drive from Cambridge.

The Keller Gallery, located at the William McKinley Presidential Library and Museum in Canton, OH, will be displaying highlights from their vast glass and china collections. The exhibition runs from August 26 thru January 14.

Included in the exhibition are spectacular pieces of Depression and Elegant Glass, Majolica, Fenton, Delft, Roseville, Spatterware and many other beautiful pieces of china and glassware.

Additional educational displays will focus on 17th Century Chinese Export porcelain, how to read makers' marks, pattern ID techniques and tips on storing and displaying ones own glass and china collection.

The exhibition will kick off with a free reception on Friday, August 25, for which reservations are required.

The William McKinley Presidential Library and Museum is located at 800 McKinley Monument Drive, NW in Canton, Ohio. More information and driving directions may be found on their website at :

www.mckinleymuseum.org



President William McKinley

Websites

- NCC WEBSITE
www.CambridgeGlass.org
- NCC WEBSITE - MEMBERS ONLY SECTION
www.CambridgeGlass.org/NCCmembers
(User Name: NCC • Password: Nearcut)
- MIAMI VALLEY STUDY GROUP WEBSITE
www.mvsg.org

3 pages of Additional Convention Pictures (only in the Electronic Crystal Ball)





