



Cambridge Crystal Ball

Published by the National Cambridge Collectors, Inc. as a resource which informs, invites and inspires the continued preservation of the glass produced by the Cambridge Glass Company of Cambridge, Ohio for future generations.

Issue No. 423

November/December 2008

Museum Holiday Schedule – A Season to Remember & You're Invited

Cindy Arent

The 2008 Holiday Season at the museum promises to be the best yet. The museum will be decorated for the season and will feature a six foot tree decorated with Cambridge Glass. Something new this year in our sales area will be jewelry made from Cambridge Glass and ornaments for your tree. Also available will be the gold swans being sold by the Elegant Glass Collectors' Study Group. There will be something for everyone on your shopping list!

Saturday, November 29th will be the Museum Holiday Open House from noon to four. That evening is the Annual Cambridge Holiday Parade. The theme of the parade is "A Season to Remember" and NCC will again have an entry. If you would like to participate and walk with the float, please meet at the museum by 5:00 p.m. that day. Following the parade, you are invited to return to the museum for soup and sandwiches and we might even sing some carols!

We have many holiday tour groups booked for November and December and could use your assistance. If you could help with any of the following groups, please call the museum at 740-432-4245 or email Cindy at ctuscan@roadrunner.com. We need at least six volunteers to cover each tour group. Following is the schedule as of the writing of this article. Please remember to contact us if you plan to come because I'm sure there will be additions, cancellations or time changes to the list.

Tuesday, November 11 at 1:00	Buckeye Beeline Travel
Saturday, November 15 at 10:00	Star Tours of Ohio
Thursday, November 20 at 11:00	US Tours/Vagabond Tours
Saturday, November 29	Open House and Parade
Tuesday, December 2 at 11:30	Lenzner Tours
Tuesday, December 2 at 4:00	Lakefront Lines
Thursday, December 4 at 2:30	US Tours
Friday, December 5 at 11:00	US Tours
Friday, December 5 at 4:00	AAA Cleveland
Saturday, December 6 at 9:00	Galaxy Travel
Saturday, December 6 at 11:30	Leisureway Tours
Saturday, December 6 at 1:00	EZ Journeys
Saturday, December 6 at 4:00	Brecksville Road Transit
Sunday, December 7 at 1:30	Perkiomen Tours
Saturday, December 13 at 10:00	Barnesville Seniors
Sunday, December 14 at 5:00	Fidelity Tours

These groups are all looking forward to learning about Cambridge Glass, dressing as glassworkers and shopping at our annual A.J. Bennett Christmas Bazaar! You do not have to lead a tour to help. We need volunteers to circulate throughout the museum, answer questions, restock the sales area and just be there smiling.

The museum hours we will be open in addition to group tour times are:

November 29 and 30 Noon to 4
December 6 and 7 Noon to 4
December 13 and 14 Noon to 4

Why not make it "A Season to Remember" and visit your museum for the Holidays. You could then tour the Dickens Victorian Village in downtown Cambridge and see the 144 mannequins lining the street, including the Glass Blower vignette sponsored by NCC. We have named him "August" in honor of August "Auggie" Heyman who was a master glass blower at The Cambridge Glass Company for over 32 years and featured in National Geographic in April, 1955.

All the best from your museum staff and volunteers and we hope to greet you during the holidays. Let's make it our best year yet!



August "Auggie" Heyman, master glass blower at The Cambridge Glass Company



PRESIDENT'S MESSAGE

Insecure Times

Hands down this is going to be the hardest Presidents message I have ever written. Considering the last few months, it would be pretentious of me to ignore what is going on around us and pretend it will have a zero effect on NCC in the near future. I would love to be able to convince myself that NCC lives in a bubble, insulated from all outside forces, but that would be an extremely naive position for me to advocate. When you consider that we have just come through another destructive, as well as costly hurricane season, along with the continued draining effect caused by two wars that the USA is actively involved in. Add to that the unfortunate collapse of the housing market coupled with the stomach churning precipitous drop of the stock market, wrapped up in a neat package of mistrust, fear and stress on all of us. Finally you add to all of that the insecurity of one of the most important Presidential elections of our lives, and it is clear that we have to be conservative in all phases of our everyday actions. Therefore, unless you have just gotten back from a vacation on Mars, it is transparently clear that money is tight. Fear, tight budgets, insecurity, and uncertain conditions are certainly not usually endemic to the healthy success of organizations that survive through the generous donations of its membership.

In view of the current failing global economies, it would be natural to hunker down and reconsider large expensive purchases. Do we really need that new car this year? Should we hold off on planned upgrades to our home? Maybe we better not take that costly vacation at this time! I mean after all, we have to make sure that the really important things are taken care of, things like family, children, parents, home and health. Things that help us in our everyday lives, both physically and mentally. Hopefully, you will agree, that one of those important things is NCC. Now, I can only speak for myself, when I say that I look upon NCC as one of those important things in my life that I must include in obligations that I want to take care of. Actually, I really don't look at it as an obligation, because when you love something and derive so much pleasure and satisfaction it becomes something much more intrinsic in your everyday life. Something that just simply makes you feel good!

Now, don't get me wrong, just because I'm acting like "Chicken Little" claiming the sky is falling, spreading doom and gloom as I go. I really don't believe it's the end of the world and I certainly don't wish to convey in any way that NCC is in any trouble today. Quite the opposite, thanks to the past generosity of all of you. In fact, I believe that if those in power, in Government and on Wall Street, would have kept their houses in order as we have done with our NCC, the country wouldn't be in the position it is in today. Over the last decade, the Board of Directors in concurrence with the membership has guided us through the current storms to much welcomed calmer seas. However, we need to be vigilant and careful in order to keep ahead of any future downpours. The Board will most assuredly do its part to be fiscally responsible, while we as members must continue to fulfill our responsibility of stewardship. I actually have quite an optimistic opinion when it comes to NCC's growth and ability to stay strong. As a group, with shared goals, we undoubtedly will succeed.

Earlier I mentioned that one of the things we might save on is that ridiculously expensive vacation we sometimes take, and that's a good idea. Now, I'm not advocating that we should stay home and stew. Not at all! In fact getting out and doing things, going places is quite a good idea. So why not consider a less expensive trip, like perhaps visiting Cambridge for the NCC Auction or the Cambridge Convention? In fact, why not both? These are really enjoyable events, shared by likeminded people, and can be had for a fraction of what it cost to go to many other places. Auction for Jane and I, is that long weekend away from the real world, the weekend that goes so fast, filled with so much fun and really is quite inexpensive. Convention, we turn into one of those weeks we consider a true vacation, which flies by way too fast. Again filled with excitement, renewed friendships, as well as a period where we just get away from all the mundane life decisions. Basically we just have fun. In today's trying times just having some fun is a necessary pursuit and when it can be had for a reasonable amount – all the better.

So in closing, I hope that you agree that NCC is as important to you as it is to me and in trying times it is one of those bright spots in your life worth supporting. Thanks for being there; it feels good to know that we are not alone. Don't forget to make plans to join us in Cambridge this year. I am positive you will have fun too!

Ken

Between Friends.....

What is that sound....that loud sucking sound.....?

This is a statement and/or question I have been asking over the last twelve months or so. It is the statement that I use every time the stock market takes one of its wild downward swings. We have all heard it...that loud sucking sound as the market takes away more of that hard earned money in our retirement or mutual funds, 401Ks and so on. The economic woes have hit everyone. Maybe this is also a good time to reflect on what we used to do that gave us enjoyment in the "good old days" and fulfilled our collecting obsession.

Think back to when you first discovered the collecting bug. I can remember when we would travel thousands of miles each year to go to antique shows – some sprang up on farmland miles from anywhere, while others were well planned and organized, held in fairgrounds and community centers. In between we would visit our local antique shops and malls and often we would return home with a treasure to add to our collection. It was exciting!

Then along came the Internet. Whether you consider Ebay a good or bad influence on the antique world, it arrived and was/is a major influence in how we manage our collections. Many items that were considered "Rare" before Ebay are no longer "Rare". Have you ever looked at Ebay and conducted a search for "Rare" items. Recently I did just that. ...over 14,700 items in Glass and Pottery were described as "Rare"! Simply amazing.

We no longer have to travel thousands of miles in search of items to add to our collection, they are right there at our fingertips. A computer and money and we are off and running. Ah...money...that loud

sucking sound rears its ugly head again. As gas prices are now considerably higher than in the "good old days", that is if you can find gas, it may be time to think "local". What if we decided to once again visit our local antique shops and malls – if we purchased an item the money we spent may be helping the local community and we just might find it more enjoyable to get out and look at the trees changing color and get a spring in our step with the cooler air (living in the South, cooler air sounds inviting). Recently I have noticed that more glass is appearing in the local antique shops and malls – maybe a sign of the times.

As the holiday season approaches give some consideration to wandering through your local antique malls – maybe there is a treasure there that will put a smile on someone's face. Share your collection with a friend – educate them on your glass passion and just maybe you will create a new Friend of Cambridge.

Make this holiday season even more special by including Cambridge glass in your decorations and remember to send me a photo of the occasion, at ncccystalball@charter.net, so that I can share your festivities with everyone in a future Crystal Ball.

Thank you so much to the Friends who have contributed with articles and photos during 2008 – there have been many and you are all greatly appreciated. Your contributions are vital to the continuing growth of our organization in 2009 and beyond. Have a wonderful holiday season and I will see you all again in 2009.

Helen K.



A toast to you for a "Joyous Holiday Season and a Happy and Healthy New Year", from your museum staff.
Kneeling L-R: Lynn Welker, Rich Bennett
Standing L-R: Carl Beynon, Betty Sivard, Lindy Thaxton,
Lisa Neilson, Sandi Rohrbough, Sharon Miller and Cindy Arent.



ONLY QUESTIONS - NO ANSWERS

By Frank Wollenhaupt

OK, I give. What's it going to take to get you to the computer and to send me an email? It would be different if you had to write it out longhand, address an envelope, lick the stamp and put it in a real mail box. All you have to do is go to the computer and send me an email. Address it to: fewvic303@sbcglobal.net.

Mine is the only column that is designed for your participation. I know nothing. I only have questions. It's your job to send the answers to me and I will then let everyone else know.

In the most recent column about the nude candlestick, I want to thank Larry, Squeek and Helen. WOW, can you believe that I got three responses from our 1,000 members. That number is so low; I can't even figure the percentage.

On the column about the Mardi gras. That story was suggested by a member who thought it would be interesting to know how many pieces of Mardi gras are out in collections and what they are. I put the story together and again heard from three people. Would you believe the person that suggested the story didn't even take the time to send me any information about what was in his collection?

I think it is time we all take a step back and ask ourselves just how much this club, museum and newsletter means to us. Have you ever thought about the hours and hours that our local club members put into keeping the museum open? Have you ever thought of how all the glass gets cleaned and how the displays keep changing from year to year? What about Helen and all she goes through to get the newsletter to us. Not just get the newsletter to us but a top quality publication. We all need to step up and be counted. We need to take a more active roll in helping.

To answer the nude candlestick question; yes there are sticks with two-lock. There is a set of Windsor sticks in Jamestown, Ohio with two locks. We hear about a pair with Royal Blue tops with two-lock in Columbus and we find two pair of Crown Tuscan with two-lock in South Carolina. The owners of the Crown sticks also have sets with gold decorations and those have four-lock. So looks like plain Crown are two-lock while gold decorated have four-lock.

No-one has reported a Gold Krystol flying lady bowl. If one turns up, Helen tells me she has dibbs on it - (but I have the sticks).

Time to change focus. We have had several programs at the conventions on the Cambridge swan. We can tell that is a style (type) 1, 2 or 3. We know what feather detail means. We can tell if it is a Boyd or a Mosser repro but can we tell why Cambridge never made a larger Royal blue swan? Why did they make the 3 1/2" in Royal Blue only? Where are all the Smoke swans? I know of one and it has a broken neck. Where are the small sizes of the Moonlight Blue swans? We have seen a story in an issue of "China, Glass & Lamps" that leads you to believe that Cambridge Glass Co. sent along some smaller blue swans with their display signs when a Cambridge Glass display was set up. Why are we missing several sizes of the Amber swan?

These are just a few of the swan questions that I have. Does anyone have an answer? Does anyone have a larger Royal Blue swan, not one that Summit made. I would love to see a real 3 1/2" Moonlight Blue one.

Till next time, keep the letters and cards coming.

Frank



Bits & Pieces From 1934

By Mark Nye

The following "bits & pieces" first appeared in "Crockery and Glass Journal" during 1934.

"Those seeking to add pieces of interest to their post-Repeal glassware should see the Cambridge Glass Company line. Pressed crystal bottles for the liquid diet are made in a variety of sizes in two types of shapes, a rounded and a squared form, while the stoppers of both are in keeping with the types of bottles.

Another group of interest is their Nautilus line. This has a cordial, a wine, a whiskey bottle, and an iced tea jug with tumblers and glasses in keeping with each of these types. All of these bottles are rounded, reminding one of the Nautilus with its circular ribbings for both the body and stopper. The spout is drawn directly from the body, while the handles are placed in a rather squared effect at the top. The cordial glasses are fairly tall stemmed while the other glasses are footed tumblers in varying sizes, depending on the bottle of the set to be made up. In this same line we have sugar, creamer, and pepper and salt shakers with chromium tops that carry out the idea of the larger pieces.

In the stemware they are showing a blown bowl with a squared stem in a variety of cuttings and etchings that range from the simple classic to the modern Neo-classic. Swirl cuts and swag effects vie with pineapple and simple-line cuttings. They are also showing several Val St Lambert and Waterford types of cuttings in a full range of stemware." February 1934

"Quite a number of new glass items are to be seen at the Cambridge Glass Co. Square decanters plain, etched or with heavy cuttings, also labeled with Scotch, Rye or Gin labels. Decanters and bottles of all types and shapes either decorated or plain that leaves you plenty of choice, no matter what the tastes of your clientele be. For home serving, and the coming seasons promise much more than what has been done in the past, they have an array of relish dishes in three, four, five and six compartments. There are plenty of shapes and an array of decorations which adds much to the sales values. Besides this they have marmalade dishes and mustard dishes, all to help in setting up for home entertaining. They have also brought out a line of buffet plates in the Everglade, Mount Vernon and Martha Washington patterns.

They have a modern line with a square stem and a Bubble etching called 'Vichy' made up in stemware and flatware. It is really a grand line and the etching adds much that is desirable to the simple severe shape.

For liqueur service, they have a handled cordial set...colored glasses and a crystal tray that makes an excellent retailer.

Their Gadroon line adds a variety of bowls in different shapes and numerous odd service pieces in colors just as we found in the original lineup. The Nautilus line, that we described a few months ago, has taken to tricky cuttings and etchings that greatly enhance the elegant shapes." April 1934

"The popular shape, No. 7966, at the Cambridge Glass Co., is now being offered with a cut stem in a complete line of stemware. Undecorated, these will retail for around \$10.00 the dozen for the goblet. This is really just the beginnings of the possibilities which this line offers, for the shape is a simple bell shape tapering down to the cut stem and permits many decorations. These will be presently on the market shortly." July 1934

"Spun Glass Dress in Marshall Field's Glassware Department - Passing through the glass department of Marshall Field & Company customers wondered why an old fashioned dress should be displayed in the glass department.

But when they examined it their wonder turned to astonishment for the sigh told them that this dress was made of spun glass, was the only one in the United States, and probably the only one in existence.

This glass dress, which is the property of the Cambridge Glass Company, is made of glass threads many times finer than silk threads. It was made in America in 1902. At that time Maxine Elliott was the leading stage favorite and a great beauty. The dress was made on a figure representing Miss Elliott. She posed many times for the modeler making the wax figure and also for the artists making the dress. This dress was not only a show piece, but could be used, for Miss Elliott wore it during one of her performances in New York. The durability of spun glass is shown by the fact that Miss Elliott wore it in 1902. It was on display at the Buffalo Exposition on a model of Miss Elliott, and was again worn on the stage by an actress in 1927.

The Cambridge Glass Company loaned this to Marshall Field & Company as an exhibit which would be of great interest to the thousands of Century of Progress visitors who visited Field's store this summer." August 1934. Editor's Note - Nothing is known about the dress today, even to whether it still exists or has been destroyed.

"The honey box - a square dish with a cover in the Gadroon pattern - has been especially designed to fit a box of honey. A ridge around the top of the dish holds the box, while a knife run around inside loosens the comb and it drops into the dish. The ridge makes it impossible for the box to slide into the dish, and the height of the dish fits the honey square so that the honey is kept in the comb.

They are also showing a dish for strained honey. This is round, with a cover, and is slotted to admit a ladle. This dish may also be used as a marmalade jar.

An early morning scene, with mallard ducks flying over a background of the sun rising over a blue lake, edged with rushes and cattails, painted in soft colors, decorates a new liquor set by Cambridge. All of the liquor glasses are included, i.e., cocktail shaker, bitters bottle, cigarette box and ash tray. This set is very beautiful as well as very unusual." September 1934

Bits & Pieces From 1934 - continued

All of the preceding were taken from features and columns appearing in "CROCKERY AND GLASS JOURNAL" and were not taken from paid Cambridge advertisements. The writers would visit the Cambridge showrooms (and those of other companies) and then write these feature articles or columns from which these items were taken. Often lines and pieces were described in general terms and without giving specific item and line numbers, leaving researchers today to speculate on specific decoration, etching, cutting or item being discussed. Many of the specific items and lines mentioned in this article are to be found in the 1930-34 Cambridge Catalog as reprinted by NCC.

We Get Letters

9-21-08

Dear Volunteers of the National Museum of Cambridge Glass,

We wish to thank you for going the extra mile for members of the Guernsey County Genealogical Society by welcoming us on Monday evening and delivering a very interesting presentation and tour.

Your knowledge and photos, along with the video showing actual citizens of our County working in The Cambridge Glass Company were exceptional. We especially enjoyed seeing the Family Tree of Mr. Bennett!

We are privileged to be associated with you in the "Crossroads of Culture".

Sincerely,
Sheila Cochran, Trustee
Guernsey County Genealogical Society

Tributes to our Friends

Each year the Annual Fund includes a special section for tributes to Friends of Cambridge whose lives include a love of Cambridge Glass and also touch the lives of others. As a tribute to these Friends, the Annual Fund receives gifts in the name of the person honored. We all share in paying tribute to those Friends of Cambridge included below and those who made their inclusion in the **2008 Annual Fund** such an honor.

Pamela Dawn Kuczewski	<i>Daniel Kuczewski</i>	Century
Dave Mitchell	<i>Janet Lee Mitchell</i>	Century
J.D. Hanes	<i>Tarzan Deel</i>	Century
Georgia Otten	<i>Mike and Lisa Strebler</i>	Century
Virginia Houston	<i>Mike and Lisa Strebler</i>	Century
Sally Gray	<i>James Herston</i>	Century
Mary Welker	<i>Squeek and Dorothy Rieker</i>	Century
	<i>Mike and Lisa Strebler</i>	Century
	<i>Carolyn Kriner</i>	Century
	<i>Melissa Treier</i>	Century
	<i>Arlene Matchett</i>	Patron
	<i>Ralph and Linda Warne</i>	Patron
	<i>Neil and Eddie Unger</i>	Patron
	<i>Historical Glass Club of Pittsburgh</i>	Patron
	<i>Tom and Noreen Kullman</i>	Patron
	<i>Mildred Willey</i>	Patron
	<i>David, Aloma, and Brigitte Chorey</i>	Patron
	<i>Melissa Treier</i>	Patron
Dennis Snyder	<i>Mike Strebler</i>	Patron

**Coming to Chicagoland,
The Largest-36th Annual Elegant
& Depression Glass Show,
See all the Colors & Patterns,
Own a Piece of American History!**

March
28th & 29th
2009

Sponsored by
The 20-30-40 Glass Society of Illinois
P.O. Box 856, La Grange Illinois 60525
Website: WWW.20-30-40society.org

March 28th & 29th 2009	
Saturday 9 am - 5 pm	Sunday 10 am - 4 pm
Concord Plaza	Midwest Conference Center
401 West Lake St.	Northlake, Illinois 60164

Admission \$8.00 Per Person
\$7.00 with this card - Limit 2
Free Parking with shuttle bus to front door
Crystal Repair; Glass Identification; Reference Library; Door Prizes.
All attendees will be processed as associate members for this event.



This report is provided to keep members up with what's happening on the world's largest Internet Auction site. It is not meant as an educational tool, nor as a pricing guide, and we cannot guarantee the accuracy of listings herein.

Greetings from eBay land! Thanks to the readers who sent me items. If you would like to help, please send the eBay auction number to me at the following email address: heartlamps@sbcglobal.net.

Rose Point

Leading off this month is a 3500/91 square tray in that sold on September 17th for only \$99. This little beauty has two handles and can be used in a variety of ways. On September 29th a stunning 1066 Gold Encrusted cigarette holder with ashtray foot sold for \$210. A nice six piece relish set (with 4 removable sections and center cup) sold for \$197.50 on October 7th. Perhaps you eBay wizards can explain why the same item with Elaine etching only brought a paltry \$12.50 on September 18th? There are still bargains out there.

Nudes

A Royal Blue statuesque ashtray, 6 3/8" tall brought \$225 on September 14th. Also that same day a hard to find statuesque claret with Heatherbloom bowl brought \$237.50.

Spectacular!

On October 8th a rarely seen Ivory Draped Lady flower holder with the early Style I base in almost pristine condition brought \$1235. October 5th saw a beautiful 1242 royal blue 10 3/4" vase with Sterling swans and grape décor bring \$1916. I'm happy to say one of our members won the bid! On Sep 8th a matched pair of Winsor Blue statuesque candlesticks sold for \$1275, spectacular!

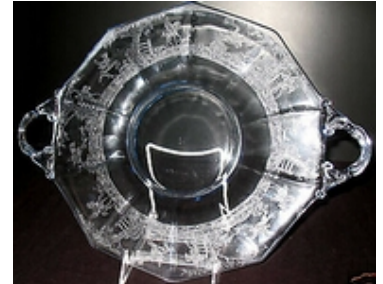
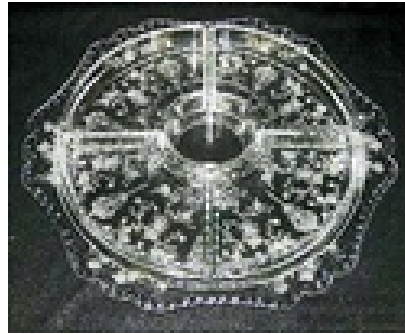
Other Etchings

On September 21st a 405 Aero Optic footed bowl in Willow Blue with Majestic etching (#732) sold for \$150. If you'd like to pull out your 27-29 catalog it's there, I've never seen one before. As Frank would say, what kind of collector are you? Also in Willow Blue a 15 inch two handled plate with Imperial Hunt Scene etching sold for \$199.99, also a rarity.

Miscellaneous

An Amberina 5" pitcher with spectacular color sold on September 11th for \$189.50. On September 19th a three piece console set in Avocado color brought \$154.26. A 1337 crown Tuscan cigarette holder with ebony foot brought \$262.77 on September 22nd. I hope you have started your Christmas shopping early, remember you can't go wrong with a gift of Cambridge glass!

Until next time, happy shopping!



Study Group Reports

Study Group #17

The Columbus Wildflowers

On Saturday, September 13, 2008, the Wildflowers had no idea that the very next day the remnants of Hurricane Ike would blow through central Ohio, leaving many of us without electricity for from three days up to a week.

Luckily, that was all in the future, and Saturday was all about glass and fun when we met at the home of Bill and JoAnne Lyle at 3:00 pm for our annual End-of-Summer Picnic / Potluck. It is always so much fun to see each other after our long summer break, and also to see what great pieces everyone has managed to find.

After some catching up and great conversation, Bill lighted the grill and donned his apron to grill burgers and shish ka-bobs, and everyone brought a wonderful assortment of side dishes and desserts. It was a true feast.



Masterchef, Bill Lyle, at work with the grill

Our first meeting of the season was then called to order by Linda Roberts, and we discussed club news and ways to help with fundraising. David told us of the idea of postcards of various groupings of glass to be sold by the museum, and we brainstormed about layouts we could photograph using our own pieces of glass.

Next, we set our meeting schedule for the coming year.

The Wildflowers will meet on:

October 2nd - at Linda Roberts' where we will have a photo session with our various colors and pieces to send to Helen for possible postcards.

November - no meeting due to the Quarterly meeting in Cambridge.

December 4th - annual Christmas party at the home of Rose MacConkey

January 8th - at David Ray's - topic "the Reopen Period"

February 5th - at Barbara Wyrick's - topic - any Cambridge items starting with A, B, C or D

March - no meeting due to the March auction

April 2nd - open host- topic to move on to letters E, F, G, H

May 7th - at Kevin & Heidi Coughlin's - letters I, J, K and L
And next September - annual picnic at the Lyle's

Finally, it was time to get to our glass excitement with Show and Tell. The fabulous array of summer finds included: a #3900 Crystal Satin Ball Jug with optic (satin both inside and out) with a lovely silver overlay pattern; which we compared to a #3400 half Crystal, half Satin Ball Jug with water and swan silver overlay by DePasse Pearsall. (The 3900 still had the 3400 swags on the sides, but differences included the shape of the spout, the handle having more of a curve, and the 3900 was slightly taller - a very interesting comparison.) We also had a Crystal Doulton Pitcher with a possible Hawkes cutting and silver overlay. We moved on to a Crystal Turkey with unusual Charleton Blackberry design; an extra-large Carmen Vase with

Crystal foot; a gorgeous Black and Gold Perfume with acorn top and DeVilbiss fitting; a Crown Tuscan Nude Candlestick with pristine Charleton Roses; an Ivory Bowl and Candlestick Console Set with brilliant Chrysanthemums, hand painted at the Cambridge factory; a Caprice #65 Crystal Oval Bowl; a

Crystal with green tint Glass Head (unfortunately not a Cambridge one); a Crystal Cordial Decanter with Carmen handle and foot; a Crystal Archfoot Daisy Basket; a Tally Ho Royal Blue handled Mug with silver overlay Diamond design; a Carmen Nude stem Champagne, Cordial AND Banquet Goblet; a Carmen Ashtray with Crystal foot; a #1066 Carmen Brandy with Crystal foot; a pair of Carmen Rams Head Candlesticks made by Fenton (recognizable by the finish itself and the color being slightly off); a Rubina Sweet Pea Vase and matching Candlesticks; a Smoke Cylinder Vase from the very late period with a Gold Encrusted "Moon" etch; a Light Emerald Vase with Hollyhock; a large Ivory Plate with intricate design of Gold and Blue Enamel

Baskets with Flowers; and a large Jade Bowl with Gold and Enamel Baskets and Flowers.

After our day of glass and fun, our get-together adjourned at 7:30 pm.

New members in the Columbus, Ohio area are always welcome and can contact either Linda Roberts at

lrobert2@columbus.rr.com or Barbara Wyrick at bwyr@ee.net

—respectfully submitted by Barbara Wyrick, Secretary



Study Group Reports-continued

Study Group #16

Elegant Glass Collectors

The ELEGANT GLASS Study Group met on September 20th, 2008 at the home of Paul and Gail Duchamp in Morristown, New Jersey. The meeting started at 2:30 p.m. with the following in attendance:

Ken & Jane Filippini, Millie & Roger Loucks, Walter Lee, Alex Wolex, Myrle Scott, Bob & Karen Arnold, Loretta Weeks, Bill & Von Dufft, Craig Kratochovil and the hosts Paul & Gail Duchamp.

We started the meeting with the treasurer's report and went on to discuss our fund raiser, old business, new business and the dates for the following meetings. Loretta Weeks will host our next meeting/Christmas Party in Pennsylvania.

We continued along with our informative show and tell consisting of the following items:

Alex brought a beautiful Mt. Vernon ball jug, Weatherford tumbler and 3 footed pink covered candy along with an Amber comport. Also displayed were a Heisey Sahara oval flower frog and a very unusual Samovar of white glass with floral design and six cups.

Walter had a great Duncan Miller bowl with etch, another magnificent find of a Viking crystal bowl, and a Heisey Rose etch on a Waverly blank platter.

Craig's find was a pair of Caprice 2 lite Crystal Candlesticks with Mt. Vernon knobs. Included were all the bobeches with prisms.

Loretta traveled with her companion, an Ivory Tall Draped Lady Flower Frog, all the way from Pa. She also had an optic green mayo with spoon and a Cambridge Square Decanter. What wonderful pieces!

Ken and Jane awed us all with their simply exquisite and Rare #794 10" x 14" Aquarium in Bluebell with #736 etch. Wow, what a beauty! Also their #1542 20 oz. Lifesaver Decanter Crystal with Cutting, Carmen Gold encrusted Lamp-gorgeous, and a Farber Gold Mosaic Cordial Bottle in Amber 3400/119 12 oz.

Bob and Karen had a Crystal Nautilus vase with Cleo etch, Black with silver overlay bud vase (unknown), Dresden Rose bud vase, a beautiful New Martinsville modernistic

pink vase with Peony etch, Cambridge #678 vase Bird/ Butterfly etch in blue, and a European frosted flower frog (2 piece).

Bill and Von had with them their treasures of a Lexington shaker in Crystal, many different Cambridge hats in Opal, Amber, Crystal and Turquoise; Crown Tuscan Candlesticks 4" style, Helio Candlesticks 7" Style, Crown Tuscan Dolphin Candlesticks, Azurite decorated Square base Candlestick, black glass decorated tall vase and a pair of lovely Crown Tuscan Nautilus lamps.

The meeting continued with a great film from a Cambridge quarterly meeting that David Ray gave on Cambridge Flower Frogs. Very informative and an excellent presentation from him.

When we all had our fill of a tasty dinner we ate our way through dessert and wonderful conversation.

It was a great day had by all and as usual a great gathering of our Cambridge Study group friends.

Respectfully submitted,
Gail Duchamp, Secretary



LYNN WELKER

2 East Main Street

New Concord, OH 43762

Phone: (740)826-7414

Evenings and weekends: (740)705-1099

Prices each, UPS extra

CAMBRIDGE SQUARE

#3797 Goblets (tumbler) (8)	12.
#3797 Sherbets (8)	9.
#3797 Cocktails (8)	10.
#3797 Cordials (8)	15.
#3797/67 Candlesticks (pr.)	25.
#3797/80 8" Vase	25.
#3797/54 6" Comport	25.
#3797/125 8" 3-part relish	20.
#3797/48 oval bowl	30.

MUCH MORE CAMB. SQUARE - CALL

CAPRICE, CRYSTAL

#24 9.5" Dinner Plates (6)	25.
#310 10 oz. Tumblers (4)	20.
#1 Goblets (5)	15.
#300 12 oz. Iced Teas (8)	15.
#183 80 oz. Ball Jug Pitcher	75.
#300 Sherbets (8)	10.
#188 2 oz. Tumblers (3)	20.
#18 Shallow Fruits (2)	25.
#23 7.5" Plates (6)	5.

MUCH MORE INCLUDING

RARITIES, BLOWN AND PRESSED STEMWARE - CALL.

CAPRICE, BLUE

#184 12 oz. Tumblers (8)	40.
#183 80 oz. Ball Jug Pitcher	250.
#67 2.5" Candlesticks (pr.)	50.
#95 2" 4 ftd. Almonds (2)	35.
#300 Wines (7)	50.
#310 12 oz. Tumblers (6)	60.
#180 5 oz. Tumblers (5)	40.
#16 Fingerbowl	60.
#89 8" 4 ftd. Salad Bowl	100.

MUCH MORE PLUS ALPINE - CALL

CAMBRIDGE ARMS, CANDLE PARTS

#1536 5" Peg Nappies (6)	10.
#1633 5" Peg Vases (6)	20.
#1563 Candle Arms (4)	18.
#628 Candle Bases (2)	14.
P431 13" Bowl	40.
#1537-8 5" Nappy w/candlewell (4)	15.
#2355 7" Ruffled Vases (3)	25.
#19-1 Bobeches with Prisms (6)	35.
#1562 Vase Arms (2)	18.

MORE PARTS, CANDELABRA CALL

CRYSTAL

#1137 Bluejay Flower Frog	85.
#1119 Eagle Bookend (1)	50.
#1128 Scottie Bookend (1)	60.
#3011 Nude Champagne, Optic	135.
Wheat Sheaf Childs Punchset 7 pce.	65.
Swan Punch Cups (8)	40.

CARMEN

#1066 Sherbets (6)	20.
Martha Washington Goblets (2)	30.
#1236 Ivyball	75.
#3400/90 6" Relish	30.
3" Swan, Style III	85.
Nude Cupped Comport	250.

AMBER

#3400/38 80 oz. Ball Jug	50.
#1211 ftd. Ashtray	45.
3" Swan, Style II, signed	75.
9.5" Dolphin Candlesticks (pr.)	165.

RUBINA

9.5" Candlestick (1)	85.
----------------------	-----

HEATHERBLOOM

Mt. Vernon Cup/saucer	40.
-----------------------	-----

CROWN TUSCAN

#1236 Ivyball	50.
#1300 8" Vase	40.
3" Swan, Gold Trim	45.

HELIO

12" Cylinder Vase, Trimmed	85.
6" 3 ftd. Sweetmeat, Rare	55.

IVORY

Doric Candlesticks (pr.)	125.
--------------------------	------

ROYAL BLUE

Tally-Ho Cups/Saucers (6)	22.
#119 10.5" Tall Basket	100.

EBONY

Calla Lily Candlestick (1)	35.
4.5" Swan, Style I, signed	60.
#616 Cigarette box, gold trim	40.

EMERALD

#3900/117 Gyro 20 oz. Jug	40.
8" Oval Shell, Charleton Roses	85.
3" Swan, Style III	35.

MOCHA

#3011 Nude Cocktail	100.
8.5" Draped Lady Flower Frog	175.
Pencil Dog (Bridgehound)	30.

AMETHYST

#3011 Nude Cocktail	90.
Pencil Dog (Bridgehound)	35.

WINDSOR BLUE

2.75" 3-toed Shell	45.
Same With Snuffer Center	45.

LIGHT EMERALD

4.5" Swan, Style I, Signed	55.
#3400/30 80 oz. Ball Jug	100.
8.5" Draped Lady Flower Frog	150.
3" Swan, Style I	35.

MANDARIN

Cascade Sugar/Creamer (pr.)	30.
3" Swan, Style III	30.

ROSEPOINT

#3500/78 Rams Head Candy Box	200.
#1402 Tally-Ho Ice Bucket	175.
#3400/52 Butter and Cover	100.
#3400/1240 12" Oval 4-toed Bowl	100.
#3500/94 Rams Head 2-Lite Candlesticks (pr.)	200.
#151 Mustard and Cover	125.
#3500/67 12" 6pce Lazy Susan Set	200.
#3500 ind. Sugar and Creamer (pr.)	40.
#968 2 pce. Shrimp Icers (2)	60.
M495 2-lite Candlesticks (pr.)	85.
#993 12.5" 4-toed Bowl	85.
#3400/38 12 oz. Tumblers (2)	60.
#3121-#3500 Stemware - CALL	



CAMBRIDGE MOTEL INFORMATION

NCC Auction – Saturday, March 7, 2009

All of these motels are located in Cambridge at Exit 178, Ohio route 209 off Interstate 70.

BAYMONT INN CAMBRIDGE
 State Route 209 South
 (740)439-1505 or 1-877-BAYMONT
www.baymontinns.com

BEST WESTERN CAMBRIDGE
 1945 Southgate Parkway
 (740)439-3581 or 1-800-WESTERN
www.bestwesterncambridge.com


HAMPTON INN CAMBRIDGE
 8775 Georgetown Rd
 (740)439-0600 or 1-800-HAMPTON
www.cambridge.hamptoninn.com

RAMADA CAMBRIDGE
 2248 Southgate Parkway
 (740)432-7313
www.ramada.com

COMFORT INN CAMBRIDGE
 2327 Southgate Parkway
 (740)435-3200 or 1-800-228-5150
www.choicehotels.com

DAYS INN CAMBRIDGE
 2328 Southgate Parkway
 (740)432-5691 or 1-800-432-5691
www.daysinncambridge.com



Sparkling Clearwater Depression Glass Club 

30th Annual Show & Sale

DEPRESSION ERA

GLASS, CHINA & POTTERY

Sat, February 14, 2009 9:00AM - 5:00PM

Sun, February 15, 2009 10:00AM - 4:00PM

The Harborview Center
 300 Cleveland St
 Downtown Clearwater

Complimentary Admission
 Admit one person

GLASS REPAIR FREE ID FREE PARKING **HOURLY DOOR PRIZE PICKLES PLUS CAFÉ GLASS DISPLAY**

BEST SHOW ON FLORIDA'S WEST COAST

For information 727-725-2069
 or on the web at ClearwaterDepressionGlassClub.com

Portion of profits benefit Pinellas County Libraries

Dates to Remember

NCC Events

November Quarterly Meeting & Educational Program

November 8, 2008

Cambridge Country Club

Program Entitled "Cambridge Arms"



2009 NCC Auction

Saturday, March 7, 2009

2009 Convention

June 24-28, 2009

Glass Shows

November 1-2, 2008
 Gateway Depressioners Glass Show
 St. Charles, MO
 Call: (636)257-0567 or (314)894-3359
 Email: firesidant@aol.com

November 8-9, 2008
 Tulsa DG Show
 Tulsa, OK
 Call: (918)747-4164 or (918)744-8020
 Email: Haveglass@aol.com

November 14-15, 2008
 North Jersey DG Show
 Allendale, NJ
 Call: Paul Duchamp (973)267-7511 or
 Walter Lee (973)838-2419

January 23-25, 2009
 Sanlando DG Show
 Sanford, FL
 Call: (407)298-3355/(407)855-5502
 E-mail: milliesglass@webtv.net

February 14-15, 2009
 Washburns San Antonio Show
 Live Oak, TX
 Call: (210)599-0635
 E-mail: washburnk@aol.com

February 20-22, 2009
 Houston Depression Glass Show
 Rosenberg, TX
 Call: (713)410-4780/(214)734-7216
 E-mail: mmxglass@aol.com

February 28, 2009
 Green River Glass show & Sale
 Kent, WA
 Call: (253)852-5250
 E-mail: kayswede@msn.com

NCC Books for Sale

Published by NCC • Members receive a 10% discount

TITLE		REGULAR PRICE	MEMBER PRICE
1910 NearCut Catalog Reprint	108 pages, paperback with 2004 price guide	\$14.95	\$13.45
2007 NearCut Value Guide	(when purchased separately)	\$3.00	\$2.70
1930-34 Catalog Reprint	250 pages, paperback with 1997 price guide	\$14.95	\$13.45
1930-34 Catalog Index	Index for above	\$2.00	\$1.80
1949-53 Catalog Reprint	300 pages, paperback, no price guide	\$19.95	\$17.95
1956-58 Catalog Reprint	160 pages, paperback, no price guide	\$12.95	\$11.65
Cambridge Colors II (New)	Hardcover with price guide	\$19.99	\$17.99
Caprice	200 pages, paperback with 2003 price guide	\$19.95	\$17.95
Caprice Value Guide	(when purchased separately)	\$5.00	\$4.50
Decorates	136 pages, paperback, no price guide	\$14.95	\$13.45
Etchings (2nd Edition)	102 pages, paperback, no price guide	\$17.95	\$16.15
Etchings, Non-Catalogued	70 pages, paperback, no price guide	\$12.95	\$11.65
Etchings: Blossomtime	26 pages, paperback, no price guide	\$7.95	\$7.15
Etchings: Candlelight	30 pages, paperback, no price guide	\$7.95	\$7.15
Etchings: Chantilly	44 pages, paperback, no price guide	\$7.95	\$7.15
Etchings: Diane	53 pages, paperback, no price guide	\$7.95	\$7.15
Etchings: Elaine	64 pages, paperback, no price guide	\$9.95	\$8.95
Etchings: Portia	57 pages, paperback, no price guide	\$7.95	\$7.15
Etchings: Wildflower	42 pages, paperback, no price guide	\$7.95	\$7.15
Rock Crystal Engravings	119 pages, paperback, no price guide	\$17.95	\$16.15
Rock Crystal Engravings (Listings)	Companion to above; lists all pieces in all patterns	\$9.95	\$8.95
Rock Crystal 1940 Illustrated Catalog & Price List		\$14.95	\$13.45
Rose Point - Second Edition	146 pages, paperback with 2007 price guide	\$19.95	\$17.95
Rose Point Value Guide	(when purchased separately)	\$5.00	\$4.50

How to Order by Mail or from the NCC Website

Send orders to:
 NCC • PO Box 416 • Cambridge, OH 43725

OHIO RESIDENTS PLEASE ADD 7% SALES TAX

Please include your name, complete mailing address and your phone number or e-mail address.

Payments by check or Money Order only, payable to NCC.

Books may also be purchased on the NCC website, www.cambridgeglass.org in the Members-Only Section, User Name: NCC, Password: CarmeN (case sensitive). *Major Credit Cards are only accepted for web purchases.*

SHIPPING/HANDLING:

All items (including books) except Scottys:	
Total order up to \$6	\$3.50
\$6.01 to \$25.00	\$6.50
\$25.01 to \$50.00	\$7.50
\$50.01 to \$75.00	\$8.50
Over \$75.00	\$11.50



The Elegant Glass Collectors' study group introduces a new fundraiser in support of the NCC. Inspired by the beautiful Cambridge glass swans, this high quality hand-crafted 22KT gold-plated swan is manufactured by the same domestic company responsible for the popular Baldwin brass Christmas ornaments. This is a beautiful ornament to adorn your holiday tree or mantle, a classy wedding or party favor for your special guests, and a great accent piece to your Cambridge swan collection. Each ornament is carefully packed in its own golden gift box- ready for gift giving or use.

\$25.00 each (+ \$5.00 shipping & handling); quantities are available. To order, please contact Bill Dufft at (610) 777-3869 or billnvon@aol.com.

**Classified Ads - Reach over 1,000
avid collectors of Cambridge Glass**

Advertising Rates:

1/8 page \$15 1/4 page \$20
1/2 page \$30 Full page \$50
(plus \$5 per photograph)

Electronic submissions should be emailed to ncccrystalball@charter.net. Use Word or PageMaker. Mailed submissions and all payments should go to PO Box 416, Cambridge, OH 43725. Deadline is 10th of preceding month. Ads must be paid in advance. *Show listings are FREE; send info to PO Box or e-mail address 60 days before event.*



Dealer Directory - \$24 for 12-months, size limited by box (see below). Includes listing on NCC website.

Remember...

When writing to these dealers, please include a self-addressed, stamped envelope.



DEALER DIRECTORY



THE DEGENHART PAPERWEIGHT
AND GLASS MUSEUM, INC.

P.O. Box 186
Cambridge, OH 43725-0186

Intersection of US 22 & I-77
Phone 740-432-2626

Dee and Tony Mondloch
Phone: 850-747-8290 glass01@knology.net
1609 Clay Ave. Panama City, FL 32405

Precious & Few

Tiffin and Duncan & Miller Glassware,
Other Elegant Glass, Antiques, Collectibles

Shop: www.apreciousfew.com



**YOUR AD COULD BE HERE
REACH THOUSANDS OF
COLLECTORS
ONLY \$24 PER YEAR**



Deborah Maggard, Antiques

Specializing in Cambridge Glass,
American Hand-Made Glass & Victorian Art Glass

We buy one piece or entire collections.
Please contact me at 440-247-5632
debbie@deborahmaggardantiques.com

P.O. Box 211 • Chagrin Falls, OH 44022



John & Peggy Scott
Scotland Ridge Farm
PO Box 1001
Aurora, MO 65605

SCOTTY'S ANTIQUES

Elegant Glassware of the Depression Era
Mainly Cambridge and Florence Ceramics
Retirement: Selling all inventory
at reduced prices

(417) 678-0624
scottjnp@aol.com



John **Burlingame** Betty

Visit our booth (B-6) in
DELILAH'S

301 1st Street Sanford, FL 32771
Antiques, glass, pottery, collectibles, etc.
cell 386-212-7121 tel 407-330-2272

Max Miller

Elegant Glassware • Books • Fiesta
...and more

THE MARKET PLACE
(713) 467-0450 - BUS 10910 OLD KATY RD.
(713) 461-1708 - RES HOUSTON TX 77043
MMXGLASS@aol.com





DEALER DIRECTORY



When writing to these dealers, please enclose SASE

Daugherty's Antiques
Jerry and Shirley
Antiques & Collectibles-Mostly Glass

www.daughertys-antiques.com
 email: sdaugh2515@daughertys-antiques.com

Shows & Mail Orders 2515 Cheshire North
402-423-7426 (evenings) Lincoln, NE 68512

Milbra's Crystal Buy & Sell

Replacement and Matching
 Milbra Long (817) 645-6066
 Emily Seate (817) 294-9837
 PO Box 784
 Cleburne TX 76033

E-mail: longseat@sbcglobal.net
www.fostoriacrystal.com

*Specializing in
 Cambridge,
 Fostoria, Heisey
 and others*

THE GLASS URN

456 West Main Street, suite G
 Mesa, AZ 85201 480-833-2702
 480-838-5936
 602-524-1109

Mail Order Open Shop

CAMBRIDGE, FOSTORIA, HEISEY, etc.

ALADDIN LAMP BOOKS

Kerosene Lamps 1884-1940
 New book 2007
 Bill & Treva Courter
 brtknight@aol.com

3935 Kelley Rd. Phone 270-488-2116
 Kevil, KY 42053 FAX 270-488-2119

Fostoria Glass Society of America
 Traveling Ambassadors
Ralph & Joyce Rider

For info: 817-545-5856
 E-mail: r.rider@sbcglobal.net

B&H ANTIQUE MARKETPLACE
 3739 Highway 29 North
 Danville, VA 24540
 (434) 836-4636

Cambridge • Heisey • Duncan • Fostoria
 Open Thur-Sat 11:00 to 5:00 (Seasonal hours apply)

Glass Menagerie Antiques
 Your Website for quality Glass from
 the 20's, 30's, 40's & 50's.
www.glasstresurechest.com

BAKER FAMILY MUSEUM
 805 CUMBERLAND ST.
 CALDWELL, OHIO 43724
 740-732-6410

bakermuseumnellbaker@msn.com

Wed & Thurs 9-4; Fri - Sat 9-5



CRYSTAL LADY

1817 Vinton St. Omaha, NE 68108
Bill, Joann and Marcie Hagerty
 Shop 402-341-0643 Home 402-391-6730

Specializing in Elegant Glass & Collectibles
www.crystalladyantiques.com

Storck's Antiques
Rick & Joyce
 Antiques & Collectibles
 Fenton, Imperial, Heisey & Cambridge
 Storck1@aol.com (763-477-6415)
 Booth 11 & 12 in the Antique Mall
 12820 Main Street, Rogers, MN

 **Mother Drucker's**
Penny Drucker
 Specializing in Elegant Glassware
 Shows & Mail Order

PO Box 18087 (775) 851-7539
 Reno, NV 89511 (888) MDRUCKER
www.motherdruckers.com

CRYSTALLINE COLORS
 Cambridge • Fostoria • Elegant Glass

Riverfront Antique Mall
 New Philadelphia, OH (I-77, exit 81)
 Booth #'s 626 and 616

Lynne R. Franks 216-661-7382

GLASS FROM THE PAST
 Maureen Gillis



www.glassfromthepast1.com
 email: maureen@glassfromthepast1.com

Cherished Collectibles

Shopping 24 hours in our online store
 Glassware, Figurines, Collectors' Plates

www.cherished-collectibles.com
 Elegant and Depression Era Glass

Old Morgantown Glass Collectors Guild
 Glass Museum
 709 Beechurst Ave.
 Morgantown, WV 26505
www.oldmorgantown.org
 Wed - Sat 10-3 Sun noon - 5:00
 For more info: (412)217-2083

VIRTUALATTIC AT THE GLASS CHALET
 SPECIALIZING IN ELEGANT DEPRESSION ERA GLASS

Sandra L. Bridwell-Walker PO Box 3448
 William P. Walker Cleburne TX 76033-3448
 Phone: 817-202-0940
 Sandy's Cell: 817-559-0328 www.virtualattic.com
 virtualattic@sbcglobal.net
 Bill's Cell: 817-357-7084 theglasschalet@sbcglobal.net

GREEN ACRES FARM
 2678 Hazelton Etna Rd.
 Pataskala, OH 43062
 (State Route 310 North)

Sat & Sun 1-7 pm 740-927-1882
 Antiques, Crystal Glass & Collectibles

THE GLASS HOUSE ANTIQUE MALL
 Furniture, Pottery, Glass
 Antiques and Collectibles
 I-70 Exit 146, East on SR 40

8825 E. Pike
 Norwich OH 43767 TEL 740-872-3799

GATEWAY ANTIQUE MALL, INC.
 JUST NW OF MINNEAPOLIS-ST.PAUL, MN
 Next to Super 8 in Rogers, MN
 (I-94/101 intersection)
 Multi-Dealer
 7 days; 10am - 6pm • 763-428-8286
 Tera & Jim Marsh, Owners
www.gatewayantiquemall1.vpweb.com

ISAACS ANTIQUES
 (740) 826-4015

See our booths in Penny Court Mall in
 Cambridge and at White Pillars Antique Mall
 (Route 40, one mile west of
 I-70 Norwich, OH • Exit #164)

PENNY COURT MALL
 637 Wheeling Avenue
 Cambridge, Ohio
 100 Booths 15,000 sq ft

HOURS: Daily 10-6 Sunday Noon-5
 Closed: Easter, Thanksgiving, Christmas

Call for other holiday hours 740-432-4369

MARGARET LANE ANTIQUES

2 E. Main St. New Concord, OH 43762
 Lynn Welker (740) 826-7414

Cambridge Glass Matching Service
 Hours: Mon-Fri 10-12 AM, 1-5 PM
 or by appointment

Our House Antiques

 Linda and David Adams
 Las Vegas, NV
 1-800-357-7169 

www.OurHouseAntiques.com
 email: David@OurHouseAntiques.com

National Cambridge Collectors, Inc.
PO Box 416
Cambridge OH 43725

website: www.cambridgeglass.org
e-mail: ncccrystalball@charter.net
(not for address changes, please)

Scotty Dog Bookends

Frosted Cobalt



**\$110/pair
Plus \$12 shipping &
handling; sales tax if
applicable.**

Cobalt



**\$100/pair
Plus \$12 shipping &
handling; sales tax if
applicable.**

Crystal Opalescent



**\$100/pair
Plus \$12 shipping &
handling; sales tax
if applicable.**

Send orders to:

NCC • PO Box 416 • Cambridge, OH 43725

OHIO RESIDENTS PLEASE ADD 7% SALES TAX

**Please include your name, complete mailing address
and your phone number or e-mail address.**

Payments by check or Money Order only, payable to NCC.