



# Cambridge Crystal Ball

Published by the National Cambridge Collectors, Inc. as a resource which informs, invites and inspires the continued preservation of the glass produced by the Cambridge Glass Company of Cambridge, Ohio for future generations.

Issue No. 439

June/July 2010

## THE 2010 CONVENTION IS JUST AROUND THE CORNER!

Sharon Miller, Convention Chairman

Now is the time to look closely at the Schedule of Events so you can plan your Convention activities. The Wednesday evening picnic is always a great time to visit with “Old Friends” and meet new ones. We are making a return trip to the Colonel Taylor Mansion this year for light supper fare with some popcorn and peanuts as well. The mansion is a delightful Victorian structure located in the north side residential area and very close to where AJ Bennett lived.

Thursday morning activities will be held at our wonderful museum. I hope you join the first time convention attendees for “Coffee With Cambridge” as they will be given a detailed as well as humorous orientation to the activities and events on the convention schedule. The dynamic duo of Freeman and Jeannie Moore will be in charge. Several years ago a Mentor program was established by Ken and Judy Rhodes to help first time attendees to the convention feel welcomed and informed about the schedule and activities available to them. Those of us who have been Mentors for this program have gained some wonderful, lasting friendships.

The remainder of Thursday will be available for conventioners to pursue activities that may be interesting to them. There are several Glass Pass Museums that are only an hour away or closer. Shopping at several of the antique malls in the area may interest some convention goers. There are also a wide variety of area attractions that are not glass related, but are definitely worth pursuing. Information about these venues will be available in your convention packets. There are also some wonderful golf courses within a 30 mile radius. If you play cribbage, Mac Otten is organizing a cribbage tournament at the Pritchard Laughlin Civic Center on Thursday afternoon. See Mac’s related advertisement in this issue. Who knows this could become a new activity and tradition at the Convention. What ever you decide to do on Thursday, please be at the Pritchard Laughlin Civic Center at 6:00 pm for Les Hansen’s educational program “A Circus of Cambridge Colors”.

Friday morning features the Miami Valley Study Club and their presentation of the Virtual Everglades Tour. This program will give convention attendees an opportunity to see first hand the work that the study group has done that allows any of us with a portable internet device to have instant research available through the web. After a quick lunch, it is time for the opening of the Glass Show and Sale. Of course, you will have picked up your entry number at 8:00 am that morning to be one of the first to enter the show. While waiting in the Galleria at the Pritchard Laughlin, the three display cases will feature circus themes and color, color, color. A preview of Alex Wolk’s educational program will be featured in one of the cases. Alex’s program is appropriately named “The Class Act of Farber” and will be presented on Saturday afternoon.

In addition to Alex’s program, Saturday morning gets an early start with the Glass Dash at St. Benedict’s gymnasium. This event is fun and great pieces of Cambridge can be found by the Early Birds who are willing to pay a little extra to be there for the unpacking by the exhibitors. At 1:00 pm on Saturday the Former Glass Workers have been invited to come to the Pritchard Laughlin for their annual reunion sponsored by the Cambridge Cordials Study Group. This year, Greg Vass and Mark Nye are going to assist the Cordials with this event. Moving the reunion to Saturday at the Pritchard Laughlin will allow convention attendees as well as dealers a convenient place and time to visit with these former workers.

I have covered the highlights of the convention schedule, but the meals and fellowship will add so much more to the four-day event. If you have questions, want to host a table or have a special piece of glass to donate to the silent action, let me know at [s.miller@cebridge.net](mailto:s.miller@cebridge.net). Otherwise, I will see you soon!!!

# National Cambridge Collectors, Inc.

PO Box 416 Cambridge, OH 43725-0416

## Friends of Cambridge – Annual Fund

NCC exists through member giving using an Annual Fund system to raise operating funds and to ensure the preservation of Cambridge glass for future enthusiasts. The Annual Fund uses a common member "renewal" date and NCC sends out Annual Fund materials to everyone once a year during March/April. There are no monthly reminders or monthly renewal dates. The Annual Fund is NCC's primary means of support and all Annual Fund gift recognition levels are per household and include membership for all adults within the household. Additionally, each household will receive a subscription to the Crystal Ball newsletter, unlimited admissions to the museum, and rights to vote in elections for the Board of Directors. Multiple households at the same address are welcomed. NCC is a 501C(3) organization and Annual Fund gifts are allowed as a tax deduction under Section 170 of the Internal Revenue Code.

### Levels of Membership

<b>Patron</b>	<b>\$35</b>
<b>Benefactor - Century</b>	<b>\$100</b>
<b>Benefactor - Mardi Gras</b>	<b>\$200</b>
<b>Benefactor - Japonica</b>	<b>\$500</b>
<b>President's Circle</b>	<b>\$1,000</b>

President's Circle includes Convention registration for two members in the household and one copy of any new NCC publications.

### National Museum of Cambridge Glass Open April thru October only



Located at 136 S. 9th Street in downtown Cambridge, OH  
 Wed-Sat 9 a.m. - 4 p.m. - Sunday Noon - 4 p.m.  
 General Admission \$4 - Seniors & AAA members \$3  
 NCC Members and children under 12 FREE

#### Contacts

NCC Museum [open April thru October only]  
 (phone)..... (740) 432-4245  
 (fax)..... (740) 439-9223

Rick Jones, President.....e-mail: [Caprice0@aol.com](mailto:Caprice0@aol.com)  
 Freeman Moore, Secretary.....e-mail: [freemanmoore@verizon.net](mailto:freemanmoore@verizon.net)  
 Helen Klemko, Crystal Ball Editor.e-mail: [ncccrystalball@charter.net](mailto:ncccrystalball@charter.net)

#### Address Changes

Please send address changes to:  
**Membership - NCC**  
**PO Box 416**  
**Cambridge, OH 43725**  
 or by e-mail to:  
[tarzandeel@verizon.net](mailto:tarzandeel@verizon.net)

#### Websites

- **NCC WEBSITE**  
[www.CambridgeGlass.org](http://www.CambridgeGlass.org)
- **MIAMI VALLEY STUDY GROUP WEBSITE**  
[www.mvsg.org](http://www.mvsg.org)

### Officers & Committee Chairs

President	Rick Jones
Vice-President	David Ray
Secretary	Freeman Moore
Treasurer	Mike Strebler
Sergeant-at-Arms	Larry Everett
Acquisitions	Lynn Welker
Archivist	Mark A. Nye
Auction	Jack and Elaine Thompson <a href="mailto:jack1746@roadrunner.com">jack1746@roadrunner.com</a>
Budget & Finance	Lynn Welker
By-Laws	Mike Strebler
Convention	Alex Citron
Crystal Ball	Sharon Miller <a href="mailto:s.miller@cebridge.net">s.miller@cebridge.net</a>
Endowment	Helen Klemko, Executive Editor
Facilities	Larry Everett
Glass Dash	Carl Beynon
Glass Show & Sale	Larry & Susan Everett
Membership	Mary Beth Hackett & Joy McFadden
Museum	Tarzan Deel, Database Administrator
Nominating	Cindy Arent
Program	Tarzan Deel
Projects	David Ray
Publications	Carl Beynon
Publicity	Mark A. Nye
Study Group Advisory	Lorraine Weinman <a href="mailto:Ncc_lw@yahoo.com">Ncc_lw@yahoo.com</a>
Technology	Jeannie & Freeman Moore David Adams, Webmaster

### Board of Directors

Cindy Arent	Larry Everett	Ken Filippini
Rick Jones	Helen Klemko	Sharon Miller
Freeman Moore	Mark Nye	David Ray
Mike Strebler	Lorraine Weinman	LynnWelker



# PRESIDENT'S MESSAGE

## *See Glass, Buy Glass, Donate Glass*

It is approaching the first of June and if you haven't made plans to join us for the 2010 National Cambridge Collectors Annual Convention, why not?

Think impulsively, come on up to Cambridge. Find a few days. Be prepared to have a good time. Make new friends. See fabulous glass displays. Hear from some of the greatest experts on Cambridge Glass in the country. Enjoy a glass of wine and dinner with some of the most passionate Cambridge collectors you will ever meet.

Sharon Miller has coordinated a terrific convention this year with the fun theme of "**Under the Big Top**". You can learn from leading expert Les Hansen about the Circus of Cambridge Colors. Meet the enthusiastic group from our Miami Valley Study Group who will give you a virtual tour of the Everglades line. Then, go visit the Everglades display at our world class National Museum of Cambridge Glass. Also, be dazzled by Alex Wolk's talk on Farberware items.

It's not too late to register and don't you need some time away? I know I do! Last year, we missed our first convention in over twenty years and we were incredibly disappointed. Hopefully we never have to miss another one.

Plus, you will get to hear first hand about the inner workings of YOUR preservation organization. You can interact with our committee chairpersons, our Board members and club officers. Attend the annual meeting of NCC and hear not only what we've accomplished this year, but where we see things going in the future.

Speaking of the future, the long-term preservation of our museum is a key priority. We are helping in that mission by focusing resources on our Endowment Fund. Not only are we building cash assets in the Fund, but we are also boosting our Permanent Collection of Cambridge Glass.

Building our glass collection is facilitated through donations from our members and friends. This month, we'd like to tell you about the family of long-time member, Morrie Oldham.

Mr. Oldham is 97 years old and now in a skilled nursing facility in Annapolis, Maryland. He and his first wife were active Cambridge collectors. She passed in the late 80's and Morrie soon remarried. His new wife fell in love with Cambridge too and they continued to collect and attend conventions through the 1990's.

His family, two daughters and one son, decided collectively to donate Dad's collection to NCC. One of his kids discovered our Museum and then his daughter Kathi Beauchesne reached out to us through our website. Webmaster David Adams immediately forwarded it to Museum Director Cindy Arent and me.

I was able to quickly connect with Kathi (who was delightful) and make needed arrangements to identify, appraise and then pack the collection for delivery to Cambridge. A couple of weeks later, Ken and Jane Filippini and Tarzan Deel met me in Towson MD at Kathi's house to begin the process. It went very smoothly. Morrie's daughter Judy then delivered the collection to Cindy at the museum on Sunday May 9th, Mother's Day. It is a Loan to Donate that we so gratefully appreciate

There is one more collection that looks to be coming our way – more on this soon.. Again, many of our members have agreed to work on this collection. We are very grateful for such generous volunteers and donors. Donating glass to NCC – whether for our gift shop or our Permanent Collection is a wonderful way to help.

And finally, June brings two outstanding ways to BUY GLASS. The fourth weekend of June at Convention time brings our annual Glass Show and Sale that is open Friday and Saturday and our fun Glass Dash – a concentrated few hours to buy in a flea market like setting early Saturday morning.

Even if you can't commit the time for the whole Convention weekend, please help support our show. In particular, if you live within 150 miles of the Cambridge area, please come to our Glass Show. And, BRING FRIENDS. This show needs your support and is a great way to introduce pals to the beauty of Cambridge Glass.

If you do come to the show, please leave your name and contact information so we can thank you for coming and send you a reminder next year on show dates. Please visit our Club table at the show and say hello..

That's one of the ways I got introduced to NCC and I can say it changed my life. It has given me countless hours of fun and introduced me to some of the greatest friends I could ever have known. Lucky me.

Rick Jones  
[Caprice0@aol.com](mailto:Caprice0@aol.com)

# “UNDER THE BIG TOP”

## SCHEDULE OF EVENTS

### *Wednesday, June 23, 2010*

2:00 p.m.	Registration Opens	National Museum of Cambridge Glass
6:30 p.m.	Picnic	Colonel Taylor Mansion in Cambridge

### *Thursday, June 24, 2010*

9:30 a.m.	“Coffee With Cambridge” First Time Conventioneers, Mentors and Friends	National Museum of Cambridge Glass
10:30 a.m.	Visit the Rotating Display Rooms at the Museum to interact with the collectors who have put together the displays for 2010. Take a Field Trip to one of the Glass Pass Museums or enjoy some free time to shop, or visit local attractions	
Time TBA	Cribbage Tournament	Pritchard Laughlin Civic Center
4:00 p.m.	Museum and Registration Close	
6:00 p.m.	Program “A Circus of Cambridge Colors” <b>Presented by Les Hansen</b>	Pritchard Laughlin Conference Room

### *Friday, June 25, 2010*

8:00 a.m.	Registration Opens Pick up numbers for entry into the Glass Show	Pritchard Laughlin Galleria
10:00 a.m.	Drop off Silent Auction glass items and begin ticket sales	
11:00 a.m.	Program – “Virtual Tour of the Everglades Line” <b>Presented by The Miami Valley Study Group</b>	Pritchard Laughlin Conference Room
12:00 noon	Silent Auction begins and continues until dinner is served	
1:00 p.m.	Opening of Glass Show and Sale	Pritchard Laughlin Exhibit Hall
5:00 p.m.	Closing of Glass Show and Sale	
6:00 p.m.	President’s Reception	Pritchard Laughlin Galleria
6:30 p.m.	Banquet and ending of Silent Auction Recognition of Volunteers & Awards Presentations	Pritchard Laughlin Galleria
8:00 p.m.	Bring and Brag/Glass ID	Pritchard Laughlin Galleria

### *Saturday, June 26, 2010*

7:00 a.m.	Glass Dash, Early Bird Admission	St. Benedict’s Gymnasium
8:30 a.m.	Glass Dash, General Admission	St. Benedict’s Gymnasium
11:00 a.m.	Closing of Glass Dash	
11:00 a.m.	Opening of Glass Show and Sale	Pritchard Laughlin Exhibit Hall
1:00 p.m.	Cambridge Glass Worker Reunion	Pritchard Laughlin Galleria
2:30 p.m.	Program – “The Class Act of Farber” <b>Presented by Alex Wolk</b>	Pritchard Laughlin Conference Room
4:00 p.m.	Closing of Show & Show	
7:00 p.m.	Cocktail Reception	Pritchard Laughlin Galleria
7:30 p.m.	Classic Buffet Supper	Pritchard Laughlin Galleria
8:30 p.m.	Annual Meeting	Pritchard Laughlin Galleria

### *Sunday, June 27, 2010*

8:00 a.m.	NCC Board Meeting	National Museum of Cambridge Glass
-----------	-------------------	------------------------------------





# ONLY QUESTIONS - NO ANSWERS

By Frank Wollenhaupt ([fewvic303@sbcglobal.net](mailto:fewvic303@sbcglobal.net))

How and what I write about each month is as much a mystery to me as it is to you the reader. I start with an idea and let it fester for several weeks before I put any words to paper. I will sometimes run an idea or two past my wife to get her take on it. We don't see eye to eye a lot of times on what I should say or not say. Everyone needs a Vicki to keep them in check.

This month I had my topic and was ready to run with it until I read the May issue of the Crystal Ball. There was a story in this issue that got me thinking and that is dangerous. The story "Silk Purse from a Sow's Ear" was from Lyle Stemen who has been cleaning some of the photos for the MVSG website. It was a very interesting article because I know "The Rest of The Story".

When Lyle and his wife came to their first convention three years ago, the "Moldy Brothers" (Larry, Ron and Frank) were doing their "Mold" presentation at the storage building. Later in the convention Lyle, his wife and two friends were sitting with us at the Banquet dinner. In talking with Lyle, we found out that he wasn't really interested in glass collecting. It was all his wife's interest. He just came to party to have some fun with his friends.

From that first convention, I think we have made Lyle a "Cambridge" believer. He came back to last year's convention and even attended the auction this year. Lyle has really done a great job in cleaning up some of the photos for us.

A lot of you are saying "so what"! What does that have to do with me and the convention?

What got me thinking was just how many people come to the convention to be entertained. They look at it as a vacation and everyone is there to take care of them. Have you ever thought what goes into making the convention great? I know I have. I have never missed a convention and would do almost anything to make sure that I don't.

In the first years it was really flying by the seat of our pants. The Holiday Inn forgot we were having a morning breakfast with them. I think that year, I was serving fruit juices.

We all need to look around while we are at this year's convention and see what we can do to help. Don't sit on your hands and wait to be taken care of. This is your convention, not a cruise ship, so if you see something that needs to be done, pitch in and get it done. Cindy, Sharon, Carl, Richie and Lynn should be able to relax and enjoy the convention just like you and me.

If you attend this years convention and have a story idea, look me up and let's talk about it. As you can see, I don't need much to get going.

One thing I do need from you. If you had a chance to purchase a limited edition item made from a real Cambridge Glass mold what would it be? This is not an official request or anything approved by the Board but it is something I have been thinking about for some time.

Over the years our club has produced two Caprice luncheon plates with the club logo in the center and several of the Cambridge bookends. I know it is a bad time to be talking about purchasing anything you don't really need but the time might be right to have it produced for us. Also depending on the item, the factory that could make it for us might not be around much longer.

So put on your thinking caps and send me an email with what that item might be. If I get some replies I will share them with you in the next month or so.

So remember, this is your convention, also – "many hands make light work".

## Announcing a new event to be held during Convention A Cribbage tournament organized by Mac Otten

*Do you think you know how to play cribbage? Mac certainly knows how to play cribbage - he has been playing for 75 years. If you think you can win, well good luck. Please email Mac at [mgotten@sbcglobal.net](mailto:mgotten@sbcglobal.net) if you are interested in playing in this very competitive tournament. We would like to have an idea how many would like to play so that the tournament setup can be established. The only requirement is to bring a deck of cards and your cribbage board. It should be great fun and there will be strong local competition for the coveted title of "Cribbage King or Queen". The tournament will be played on Thursday afternoon of Convention week at the Pritchard Laughlin Center. The exact time will be revealed when you register for the Convention.*



douglas137s fotosearch.com

## *Some scoop on our Convention speakers*

### **“A Circus of Cambridge Colors”**

**Les Hansen** will serve as an educational speaker once again for the 2010 convention. His topic, “A Circus of Cambridge Colors”, has captured Les’ curiosity and investigation for many years. The program will briefly review the raw materials to produce the specific Cambridge colors, as well as the ease/difficulty to produce the individual colors. Furthermore, Les will provide explanations for the varied coloration of items produced in Peachblo, Carmen, and Crown Tuscan. Dr. Hansen is a researcher and teacher at the University of Minnesota, and he enjoys applying his research and educational skills to Cambridge glass.

### **“Virtual Tour of the Everglades Line”**

If you thought the only Everglade was in Florida, you need to visit the beautiful display at the NCC museum and join the program during this year’s convention. The **Miami Valley Study Group** will be doing a PowerPoint presentation on the various lines that comprise the “Everglade” line plus discussion of the MVSG web site and how it can assist in Cambridge glass identification and study. Are you familiar with the Leaf line, Springtime line and La Fleur treatment? If not, you should be sure to attend the MVSG “Virtual Tour of the Everglade Line.”

Also during the convention the MVSG will be setting up a photo booth for anyone that would like to share their Cambridge glass through our website. The item could be something you brought from home and want to share it or it could be something you just found on the showroom floor. Some day we would like to have a real photo for everything we have a catalogue photo of. We hope to have the time and place in the convention packet.

### **“The Class Act of Farber”**

Come one come all and join me, **Alex Wolk**, for a presentation of beautiful Cambridge Glass dressed in gleaming chrome and other metal finishes. Many of you may have seen me walking around at glass shows, flea markets and most probably at previous Cambridge Conventions with a set of plastic pails with covers that double for seats. Here is your chance to see what was in those pails. Together with my buckets, I was able to put together a very comprehensive collection of Farber Brothers-Krome Kraft. These items were truly unique in their day. They had a flare all their own, and today they attract collectors of various depression glass patterns, Art Deco metal wares and of course Cambridge Glass. The Cambridge Glass Company had a very close working relationship with Farber Brothers and produced by far the lions share of glass inserts and parts used by Farber Brothers to create their production items.

In previous discussions and lectures that I had the honor of giving, I tried to represent all of the glass and china manufacturers that contributed to Farber Brothers creations equally. For this coming Cambridge Convention, I have prepared a presentation on only Cambridge Glass made for Farber Brothers. Where as this somewhat limits my showing you what Farber Brothers created in their 50 years in existence, it will allow me to discuss in greater depth those items that were manufactured by Cambridge. After all, with only a few exceptions, all of Farber Brothers glassware items (stems and tumblers) were made by Cambridge. The same holds true for their decanters and pitchers.

I am sure that you will be familiar with many of the items that you will see, but then I am equally as sure that there will be many surprises for you for you to learn about. After all, what are these Cambridge Glass Conventions that we all go to all about? Of course we all have the opportunity to build our collections through all of the wonderful items that are for sale, and this is a most enjoyable part of it all. Then aside from this, there exists a great opportunity for us to learn about Cambridge Glass. We all have the chance to discuss our favorite things with others that share our interests. Give me a chance to convey to you some of the knowledge I have amassed on my favorite collectible, and I’m sure that you won’t be disappointed. I am eagerly looking forward to seeing all of you at this years convention and hope that many of you will have the time to let me share my passion for Farber Brothers-Krome Kraft with you.

# The Corbett's Annual Ohio Trip 2010

By Kathy Corbett

Each year we anticipate our once a year trip to Ohio, and what wonderful treasures are waiting for us. We anticipate, with excitement, our visit to Cambridge, and the regular various haunts that always find more glass to fuel our passion for that one missing item in our collection. Our week long stay took us over 1400 miles of treasure hunting, and was a good week with the exception of a 24 hour flu bug that grounded us in the hotel. With each year, this being our tenth year anniversary trip, we never know what to expect and always hope for one rare piece to jump out at us, and boy was this a **GREAT YEAR!** In the over 17 years of collecting there are always those pieces that you just don't think you will ever see or find. Now jump to Wednesday of our Monday through Sunday trip. We were told of a two monkeys lamp that MIGHT be available but we would have to wait because there was someone ahead of us that would have first chance. We kept hoping, but weren't expecting what would happen next. Our last day in Ohio, before flying home the next morning, was Saturday and we headed back to the Heart of Ohio for one last walk in our favorite antique store. We did find a few pieces, including a stone carved dachshund that looks like one of our canine family members, and the store made arrangements for shipping them back to California for us. Finally back in Columbus, that evening, we treated ourselves to a nice dinner out and planned a very quiet evening getting ready for our flight home early Sunday morning.

It was 5:30 Saturday evening when the call came in. The two monkeys lamp is available but you will have to come and get it tonight because not a one of us felt comfortable shipping it. **"WHAT...YES...OKAY, WE'LL BE RIGHT THERE!"** RIGHT, we will be right there; we were asking ourselves after the call. Both of us were feeling the aching in our legs from the crazy week running through antique stores at store opening to closing. We didn't let that stop us, and we were running around getting ourselves dressed again and into go go mode. We were out of the hotel by 5:36 with an hour drive ahead of us. We just couldn't believe it the whole hour long drive just seemed like forever. (We could feel the anticipation growing, of finally adding a two monkeys lamp...) But when we got there.....**WOW**, even more exciting!

Now our trip back to the hotel was an ongoing conversation about what we could put them in for the ride back home that we could carry on and put under our seat on the plane. We were taking no chances, and headed straight to a Penny's Outlet store for some kind of a container that would be small enough and provide the best protection. Surprising enough, we found the perfect thing...a carry on pet carrier just the right size. Back at the hotel, great care was taken to fill cavities and wrap the lamp for a safe flight home. (Sounds pretty normal

right?) Well this is where the story gets exciting. For those of you that fly well know about the security inspection. It can be a quick process, or kind of a pain, but let me just say that the one thing you **NEVER** do is put a Two Monkeys lamp in a pet carrier and think it won't get flagged. When the image came up on the x-ray machine, of these two poor monkeys hugging themselves, we were immediately pulled aside for a bag inspection. Now thinking back about our experience, we know what they must have been thinking. These two animal abusers have bubble wrapped, shrink wrapped and placed these two scared monkeys into a box and then placed them in their carrier. The poor monkeys are so scared that they are hugging and huddling together, frozen with fear. Meanwhile the two monkeys lamp was hurriedly unpacked and we were finally released as not being smugglers, or abusers, of these poor little creatures. (Funny now, not so great then.) Well we packed them back best we could and returned them to the pet carrier and thank goodness they sit proudly in our family room to remind us of the wonderful trips that fill our lives. We can tell you that you just never know what you'll find, so keep up the search.

Hey, on a similar note, did we ever tell you about the Cambridge commode, or potty, that we purchased from a lady that was using it for special occasions to serve fruit salad? Well, I guess that's a story for another time, though we will say that she wasn't too thrilled to learn what it was actually used for prior to her acquiring it...







by Larry Everett

This report is provided to keep members up with what's happening on the world's largest Internet Auction site. It is not meant as an educational tool, nor as a pricing guide, and we cannot guarantee the accuracy of listings herein.

Greetings from eBay land! Hope to see you all at convention! Please forward interesting news to me at: [heartlamps@sbcglobal.net](mailto:heartlamps@sbcglobal.net).

**Rose Point**

A 12 5/8" flat rimmed bowl (looks like a flat rimmed soup only bigger) sold on April 28<sup>th</sup> for \$226.65. A Carmen 3500 10 oz water goblet GE with gold trim (gold badly worn on top rim) ended at \$560 on April 28<sup>th</sup>. A gorgeous #1359 bowl with Wallace sterling pierced Rose Point edge ended at \$221.07 on April 27<sup>th</sup>. On April 12<sup>th</sup> a rare #1372 decanter (wine bottle shape) soared to \$966.55.



**Statuesque**

An Amber 3011/29 mint found a new home for \$400 on April 14<sup>th</sup>. An awesome signed GE Diane Crown Tuscan cigarette box and cover sold for \$595.

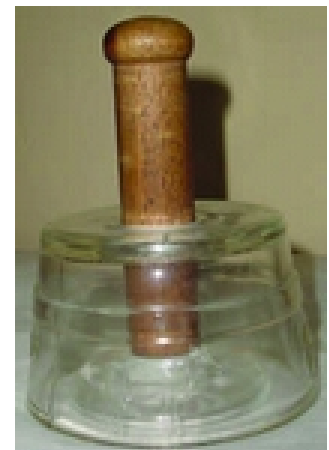


**Other Etchings**

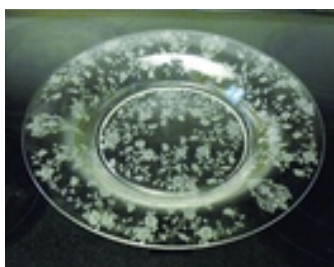
A stunning Ebony GE Wildflower 3400/647 two lite candlestick disappeared for \$150. On April 28<sup>th</sup> a Diane Heatherbloom footed 1066 ashtray was hammered down at \$206.01. Also in Heatherbloom was a magnificent pillow vase (#1228) with Apple Blossom etching. It sold on May 1<sup>st</sup> for \$678.98. In the "I can't believe it's not Butter" department, a really, really rare Candlelight 3400/52 butter sold on April 5<sup>th</sup> for \$525.

**Miscellaneous**

Speaking of butters, an early Butter Mold with an impressed "cow" design sold for \$33.50 on April 21<sup>st</sup>. The description said "The curator at the Cambridge Glass Museum told me that these were made at the Cambridge Glass Company circa late 1800's early 1900's". I wonder who the mythical "curator" is that this person talked to? A really unusual 12" Carmen Tally Ho vase sold for \$178 on April 23<sup>rd</sup>. A complete Emerald Green Keg Decanter Set with 6 tumblers and Ebony tray ended at \$228.40 on April 25<sup>th</sup>. On April 28<sup>th</sup> a hard to find pair of Cinnamon 3 lite keyhole candlesticks sold for a mere \$84. A rare Mardi Gras 10" vase (chip on inner top edge) managed \$766.97 on May 2<sup>nd</sup>. Remember that Mystic Draped Lady oval base flower frog that didn't sell "Buy it Now" last month for \$895? Guess what? It sold this month for \$935, go figure! Lastly, a jaw droppingly, absolutely drop dead gorgeous, killer Jade perfume lamp shade with Black enamel Dragon decorate made me cry when it sold for \$660. No, I didn't get it.



Happy hunting!





# Study Group Reports

## Study Group #16

### The Elegant Glass Collectors

The Elegant Study group met on March 20<sup>th</sup>, 2010.

It was held at Ken and Jane Filippini's house with Ken and Jane Filippini, Gail and Paul Duchamp, Rick and Cindy Jones, Roger and Millie Loucks, Myrle Scott, Loretta Weeks, Bill and Von Dufft, Karen and Bob Arnold, Wendy and David Loss, Laura and Drew Kozdemba and Walter Lee in attendance.

We would like to welcome to our Elegant Study Group, Rick and Cindy Jones. It is our pleasure.

We also had guests to the group David and Wendy Loss who enjoyed the meeting so much they volunteered for the future program involving the Crystal Ball and became members as well. Welcome to David and Wendy Loss.

The meeting started at 3:00 P.M. First on the agenda was the discussion of fundraisers. We then moved on to new business and talked about the educational purpose of programs and how informative they are. Rick brought old Crystal Balls and he thought it might be a good idea to inventory what happened in a specific year from a glass standpoint as well as the Crystal Ball standpoint, pricing, what sold at auctions, ect. Everyone took two years, from the 70's to the 90's. Our future program will be most interesting.

Our Bring and Brag consisted of New Martinsville Man in the Moon Candlesticks, Gold encrusted Wildflower cheese and cracker, Rockwell silver overlay cigarette box, Amber Everglades crimped bowl, Alex brought his slightly "violated" (from the sun) Near Cut Inverted Strawberry basket and a Near Cut Daisy basket, Bretoone deep etch on gold krystal cheese platter, Bill & Von had a 8" flip vase with Manner cutting, Goldenrod marmalade/sugar with gold Willow border, Elaine etch on Amethyst bowl, Tally Ho frosted "Just a Swallow" cup silver decorated, Ken and Jane presented a Carmen ball pitcher with gold encrusted Rosepoint, 10" Primrose opaque with Dragon decoration, Bob and Karen Arnold brought #1336 floor vase etch Diane, #278 vase #405 etch Border Betty, #402 vase Moonlight Blue etch 741, #1335 Aero Optic LaRosa vase etch Magestic #742 with Betty rim, 2 "Plastic" Prism signs, one red with gold lettering and Crown Tuscan pink with gold lettering, Rick and Cindy had a magnificent 12" Madri Gras



vase and a Crystal Tally Ho pitcher etched Hunt scene and Elaine, and a 3142/12 10" Gyro Optic flat bowl with gold encrusted Chintz #1 etching. A myriad of other wonderful pieces were also shown.

We settled down to a luscious lunch, scrumptious desserts, lots of chatter and great entertainment. We are all looking forward to our next meeting before Convention. Respectfully, Secretary, Gail Duchamp

## Study Group #17

### The Columbus Wildflowers

On Thursday, April 1, 2010, the Wildflowers met at the home of Linda and Bryan Roberts at 7:00 pm. Our special guests for the evening were Jack and Elaine Thompson, and it was great to have them at our meeting. We had some wonderful refreshments and conducted a very short business meeting, then jumped right into our program.

Linda has been asked to conduct a roundtable discussion at her upcoming IPBA perfume convention, and gave us the honor of previewing her presentation on Perfumes and Boudoir Items. She will also be submitting an article on this topic to the Crystal Ball in an upcoming issue, so everyone can look forward to that, because it was a phenomenal presentation. We talked about the companies producing perfumes and buying blanks for their hardware, the items that were produced, how to tell who made your bottle, and many of the etchings and decorations found on perfumes, while looking at fabulous examples in Linda's collection.

We ended the evening with dessert (and "Azurite" Peeps for Easter) and Show and Tell which included a 3400/97 - 2 oz Perfume etched Elaine with a mint stopper; a #531 Puff Box and #198 - 2 perfume set in Blue 2 with Silver Overlay; a 3400 small Puff Box etched Diane; a Carrera Community Pomade; an Alpine Caprice Puff Box with upper satinized rim and metal lid with Rose emblem for which no mold record could be found; and 4 triangular Caprice individual Ashtrays.

We always enjoy our time together, and our meeting adjourned at 10:15 pm. The Wildflowers next meeting will be May 6th at the home of Bill and JoAnne Lyle, with our final alphabet letter theme of U-V-W-X-Y-Z.

New members in the Columbus, Ohio area are always welcome and can contact either Linda Roberts at [lrobert2@columbus.rr.com](mailto:lrobert2@columbus.rr.com) or Barbara Wyrick at [bwyr@ee.net](mailto:bwyr@ee.net)

--respectfully submitted by Barbara Wyrick, Secretary

National Depression Glass Association, Inc.  
36th Annual Convention  
**Glass Show & Sale**

Hosted by the Wichita Glass Gazers

Sat, July 10, 2010  
10am - 5pm

Sun, July 11, 2010  
11am - 4pm



Follow the Yellow Brick Road to the Emerald City where  
"Glass is Ozzz-some"!!!

CENTURY II EXHIBITION HALL  
Downtown WICHITA, KANSAS  
US HWY 54 - Central Business Exit

\$8 General Admission (good both days)  
\$20 Early Bird Admission Saturday, July 10, 8am - 10am

Glass Displays

Educational Seminars

Guest Authors



Information: [www.NDGA.net](http://www.NDGA.net) 316.524.1553 [baglassgazer@aol.com](mailto:baglassgazer@aol.com)



## In Memorium Joyce Dawson

**Longtime NCC member Joyce Dawson passed away on April 7, 2010 at the age of 75. She is survived by her husband WT and many children, grandchildren and great grandchildren. She had four children – one daughter and three boys - one of whom, Dr. Randy Dawson preceded her in death.**

**Joyce was member #650 and resided in Roseburg, Oregon. She was born in Atoka, Oklahoma. Joyce was passionate about local sports, the Oregon State "Beavs" and the Dallas Cowboys. She was also an avid card player, reaching Life Master status in bridge. She was active in her local church as a teacher and helped develop a learning center there. According to her family, Joyce's full life included time spent fishing, singing and enjoying country music.**

**Her most enjoyable hobby/obsession was her antique glass collection. She was a very knowledgeable and respected glass dealer and certified appraiser. Her friends in NCC will miss her and send their sincerest condolences to WT and family.**

## Inside Edge

### NCC Events

## 2010 Convention

## June 23-27, 2010

*If you know about any upcoming glass shows or other glass events, please pass the word on to us at least six to eight weeks before the show dates. These listings are free of charge.*

### Glass Shows

#### June 10-12, 2010

National Imperial Glass Collectors' Society  
Annual Convention  
Bellaire, OH  
[www.imperialglass.org](http://www.imperialglass.org)  
E-mail: [info@imperialglass.org](mailto:info@imperialglass.org)

#### June 12-13, 2010

Belleville Antique American Glass Show & Sale  
Belleville, Ill  
Call: (618)972-5049  
E-mail: [tuckant@gmail.com](mailto:tuckant@gmail.com)

#### July 24-25, 2010

Peach State DG Show & Sale  
Marietta, GA  
Call: (770)579-9225 or (770)426-1458  
More Info: [www.psdgc.com](http://www.psdgc.com)

#### July 31 - August 1, 2010

Chicagoland Antique American Glass & Dinnerware Show & Sale  
Wheaton, IL  
More Info: [www.midwestglassandpottery.com](http://www.midwestglassandpottery.com)

#### August 7-8, 2010

Pensacola Looking Glass Show  
Pensacola, FL  
Call: (972)672-6213  
More Info: [www.meyerlookingglass@hotmail.com](mailto:www.meyerlookingglass@hotmail.com)

#### August 14-15, 2010

Slidell Looking Glass Show  
Slidell, LA  
Call: (972)672-6213  
More Info: [www.meyerlookingglass@hotmail.com](mailto:www.meyerlookingglass@hotmail.com)

#### August 20-22, 2010

Houston Glass Club Show  
Rosenberg, TX  
Call: (281)240-0382  
More Info: [www.houstonglassclub.org](http://www.houstonglassclub.org)

#### October 1-2, 2010

Heart of America DG & Pottery Show  
Independence, MO  
Call: (816)308-7495  
More Info: [www.hoagc.org](http://www.hoagc.org)

# DEALER DIRECTORY

**Dealer Directory - \$24 for 12-months, size limited by box (see below). Includes listing on NCC website.**

## Advertising Rates:

1/8 page \$15    1/4 page \$20  
1/2 page \$30    Full page \$50  
(plus \$5 per photograph)

Electronic submissions should be emailed to:

[ncccrystalball@charter.net](mailto:ncccrystalball@charter.net).

Use Word. Mailed submissions and all payments should go to PO Box 416, Cambridge, OH 43725. Deadline is 10th of preceding month. Ads must be paid in advance. Show listings are FREE; send info to PO Box or e-mail address 60 days before event.

### ALADDIN LAMP BOOKS

Kerosene Lamps 1884-1940  
New book 2007

Bill & Treva Courter  
brtknight@aol.com

3935 Kelley Rd. Phone 270-488-2116  
Kevil, KY 42053 FAX 270-488-2119

### Max Miller

Elegant Glassware • Books • Fiesta  
...and more

THE MARKET PLACE

(713) 467-0450 - BUS 10910 OLD KATY RD.  
(713) 461-1708 - RES HOUSTON TX 77043  
MMXGLASS@aol.com

### Cheshire Cat Antiques

Specializing in elegant depression to mid-century era glass and vintage kitchen glass.

Francee Boches > 305-884-0335  
fboches@cheshirecatantiques.com

Pull up a Mouse!  
Shop 24 hrs a day at  
[cheshirecatantiques.com](http://cheshirecatantiques.com)



### BAKER FAMILY MUSEUM

805 CUMBERLAND ST.  
CALDWELL, OHIO 43724  
740-732-6410

[bakermuseumnellbaker@msn.com](mailto:bakermuseumnellbaker@msn.com)

Wed & Thurs 9-4; Fri - Sat 9-5

## Classified Ads - Reach over 1,000 avid collectors of Cambridge Glass

### CRYSTAL LADY

1817 Vinton St. Omaha, NE 68108  
Bill, Joann and Marcie Hagerty  
Shop 402-341-0643 Home 402-391-6730

Specializing in Elegant Glass & Collectibles  
[www.crystalladyantiques.com](http://www.crystalladyantiques.com)



### Mother Drucker's Penny Drucker

Specializing in Elegant Glassware  
Shows & Mail Order

PO Box 18087 (775) 851-7539  
Reno, NV 89511 (888) MDRUCKER  
[www.motherdruckers.com](http://www.motherdruckers.com)

### CRYSTALLINE COLORS

Cambridge • Fostoria • Elegant Glass  
Penny Court Mall, Cambridge - 2 booths  
Riverfront Antique Mall  
New Philadelphia, OH (I-77, exit 81)  
Booth #'s 626 and 616

Lynne R. Franks 216-661-7382

### GLASS FROM THE PAST

Maureen Gillis



[www.glassfromthepast1.com](http://www.glassfromthepast1.com)

email: [maureen@glassfromthepast1.com](mailto:maureen@glassfromthepast1.com)

### Cherished Collectibles

Shopping 24 hours in our online store  
Glassware, Figurines, Collectors' Plates

[www.cherishedcollectibles.com](http://www.cherishedcollectibles.com)  
Elegant and Depression Era Glass



### VIRTUALATTIC AT THE GLASS CHALET

SPECIALIZING IN ELEGANT DEPRESSION ERA GLASS  
Sandra L. Bridwell-Walker PO Box 3448  
William P. Walker Cleburne TX 76033-3448  
Phone: 817-202-0940 [www.virtualattic.com](http://www.virtualattic.com)  
Sandy's Cell: 817-559-0328 [virtualattic@sbcglobal.net](mailto:virtualattic@sbcglobal.net)  
theglasschalet@sbcglobal.net  
Bill's Cell: 817-357-7084

### Daugherty's Antiques

Jerry and Shirley  
Antiques & Collectibles-Mostly Glass

[www.daughertys-antiques.com](http://www.daughertys-antiques.com)  
email: [sdaugh2515@daughertys-antiques.com](mailto:sdaugh2515@daughertys-antiques.com)

Shows & Mail Orders 2515 Cheshire North  
402-423-7426 (evenings) Lincoln, NE 68512

### THE GLASS HOUSE ANTIQUE MALL

Furniture, Pottery, Glass  
Antiques and Collectibles  
I-70 Exit 146, East on SR 40

8825 E. Pike  
Norwich OH 43767 TEL 740-872-3799

### Milbra's Crystal

Replacement and Matching  
Milbra Long (817) 645-6066  
Emily Seate (817) 294-9837  
PO Box 784  
Cleburne TX 76033

Buy & Sell  
*Specializing in  
Cambridge  
Fostoria, Heisey  
and others*

E-mail: [longseat@sbcglobal.net](mailto:longseat@sbcglobal.net)  
[www.fostoriacrystal.com](http://www.fostoriacrystal.com)

### ISAACS ANTIQUES

(740) 826-4015

See our booths in Penny Court Mall in  
Cambridge and at White Pillars Antique Mall  
(Route 40, one mile west of  
I-70 Norwich, OH • Exit #164)

### The American Bell Association International, Inc.

7210 Bellbrook Drive  
San Antonio, TX 78227-1002  
[www.americanbell.org](http://www.americanbell.org)



### MARGARET LANE ANTIQUES

2 E. Main St. New Concord, OH 43762  
Lynn Welker (740) 826-7414

Cambridge Glass Matching Service  
Hours: Mon-Fri 10-12 AM, 1-5 PM  
or by appointment

### Our House Antiques



Linda and David Adams  
Las Vegas, NV  
1-800-357-7169

[www.OurHouseAntiques.com](http://www.OurHouseAntiques.com)  
email: [David@OurHouseAntiques.com](mailto:David@OurHouseAntiques.com)



National Cambridge Collectors, Inc.  
PO Box 416  
Cambridge OH 43725

website: [www.cambridgeglass.org](http://www.cambridgeglass.org)  
e-mail: [ncccrystalball@charter.net](mailto:ncccrystalball@charter.net)

## Friends of Cambridge – Annual Fund

NCC exists through member giving using an Annual Fund system to raise operating funds and to ensure the preservation of Cambridge glass for future enthusiasts. The Annual Fund uses a common member "renewal" date and NCC sends out Annual Fund materials to everyone once a year during March/April. There are no monthly reminders or monthly renewal dates. The Annual Fund is NCC's primary means of support and all Annual Fund gift recognition levels are per household and include membership for all adults within the household. Additionally, each household will receive a subscription to the Crystal Ball newsletter, unlimited admissions to the museum, and rights to vote in elections for the Board of Directors. Multiple households at the same address are welcomed. NCC is a 501C(3) organization and Annual Fund gifts are allowed as a tax deduction under Section 170 of the Internal Revenue Code.

### Levels of Membership

Patron	\$35
Benefactor - Century	\$100
Benefactor - Mardi Gras	\$200
Benefactor - Japonica	\$500
President's Circle	\$1,000

President's Circle includes Convention registration for two members in the household and one copy of any new NCC publications.

## ***National Museum of Cambridge Glass*** Open April thru October only

Located at 136 S. 9th Street in  
downtown Cambridge, OH  
Wed-Sat 9 a.m. - 4 p.m.  
Sunday Noon - 4 p.m.  
General Admission \$4

Seniors & AAA members \$3

NCC Members and children under 12

**FREE**

