



# Cambridge Crystal Ball

Published by the National Cambridge Collectors, Inc. as a resource which informs, invites and inspires the continued preservation of the glass produced by the Cambridge Glass Company of Cambridge, Ohio for future generations.

Issue No. 447

April 2011

## *Observations by a Tour Guide* by Larry Everett

Susan and I had the opportunity to serve as tour guides during several bus tours of the museum. I thought it might interest others to learn what our visitors see and do.

This year we had a total of 42 bus tours, many occurred on the weekends and on one Saturday there were four buses on the same day. Before the tours begin, sidewalks are swept or shoveled; rest rooms cleaned, floors vacuumed and the gift shop is restocked. All the museum staff and volunteers are attired in period dress. It takes a minimum of eight volunteers for each tour. The tour bus reserved sign is placed by the curb outside the entrance door to allow visitors to walk straight into the museum. The buses are provided with a Dickens volunteer who serves as their personal guide during their stay in Cambridge.

Once the bus arrives, Cindy goes onboard to welcome our guests and provide instructions. Because of the large numbers (most buses have 44 – 50 guests) the first 18 guests are guided to the display cases to the left of the entrance doors, the next 18 are guided to the auditorium and the remaining guests are guided back to the research room area. I will describe each group's activities separately, so hopefully, it will make more sense to you.

The 18 guests in the glass display area are divided into two groups. We found that if the group is any larger, guests cannot hear or see what the tour guide is talking about. The first group of nine learns about the factory opening, the Near Cut era and follows the cases around the museum following the normal timeline of Cambridge glass from 1902 to 1958. The second group of nine goes to the special display room to learn about the Everglade line, then to the "Over the Top" display in the sample room and lastly to the Dining Room display. Once this group is done looking at the dining room, we move to the Near Cut area and start the tour with the normal timeline sequence. Normally Rich, Gary, and I led these groups.

The group in the auditorium is welcomed and then they view the eight minute video "The Crystal Lady". Cindy and Sandi tell the visitors about the factory and glass making process and answer any questions from the video presentation. Five of the

guests are "volunteered" to serve and be dressed as a "gatherer", "presser", "glass blower", "finisher", and "etching lady." Photos abound during this session, especially if a man ends up as the etching lady.

The group that is guided to the back is also divided into two groups. The first half moves to the research library with Carl and the remaining guests move to the back room with Betty. Carl describes the etching process and how we make jewelry out of Cambridge glass. Guests then have the opportunity to use the etching plates to do a design transfer that they can take with them. This is always a very popular activity. Betty explains the cutting process, shows the moulds and completes the tour of the packing area and the remaining display cases in this area.

Perhaps the most important member of the team is the timer. Sally performed this function flawlessly. She let us all know at a five minute warning and a final warning on time. This was so essential because all three groups have to move at the same time to the next area. So, as you can see, for one bus our volunteers provide the same information three times.

At the end of the presentations time is given for questions and shopping in the gift shop. Marybelle and others man the checkout counter during this mad rush. Visitors always left with a smile and thanked us for a great experience. I always asked my groups if there were any glass collectors in the group. I had only two people that indicated that they did collect glass. Interestingly, they did buy a great amount of glass and jewelry at the end of the tours. Since the guests were mostly retirement age, most were not interested in buying large items, but did want a memento of their visit. I even had two ladies ask me for the key to the sample room because they wanted to buy some of the items in Rich's collection, but don't we all?

One comment that really stuck with me was, "We've traveled all over the world, but we have never been treated better than here in Cambridge, Ohio." If you are in Cambridge during the Dickens event, stop by the museum and witness all of the activities first hand, or better yet, volunteer, you will be glad you did!



# PRESIDENT'S MESSAGE

## Traveling for Glass, and More

With the help of a couple NCC members and few touring glass dealers, last fall I sketched out a tentative schedule for attending one glass show per month from January through June. My purpose was two-fold. The primary intention was to identify glass dealers who would enhance the overall quality of our Glass Show and to personally invite them to participate in our Glass Show. Secondly, I wanted to add some cool pieces of Cambridge glass to my collection. Having been given a personal invitation by NCC member, Fleur de Lys Healey, I scheduled my first stop at the Sanlando Depression Glass Show in Florida on January 29. While shopping the glass show, I had the opportunity to speak with fellow NCC members as well as glass dealers from around the country. NCC member, Greg Vass, volunteered to join me on this journey and we both had a great time. Florida is a great place to visit in January. On the return flight to Columbus, I thought about my February adventure.

The next three weeks passed quickly, and then I was off to Houston, TX on February 18. Multiple communications with NCC members, Jeannie and Freeman Moore, were required to answer some logistics concerns, but everything worked out great. I was very excited about having the opportunity to attend the show. The Houston Glass Show is actually located in Rosenberg, TX, which is located about 30 miles southwest of Houston. It was great to personally meet some NCC members who have been unable to attend our Annual Convention. The glass shopping and buying was excellent, so I hope to return in the future.

Last fall, when I started creating my travel schedule, I discovered there are glass shows scheduled in some of America's greatest cities. With a little bit of planning, people can easily attend one of these glass shows. Scheduling flights, booking hotels, renting cars, locating restaurants, and obtaining driving directions is simple through travel agencies and online websites. If you are looking for a warm place to travel during the months of January and February, then please consider attending one or more of the many glass shows offered in Georgia, Florida, Arkansas, and Texas. You will not regret it.

Annual Fund Chairpersons, Ken and Jane Filippini, have written an article which appears in this issue of the Crystal Ball

explaining the importance of listing the names of all household members wishing to be members of NCC. Anyone within a household can be a member of NCC. If you have not received the Annual Fund mailing, you will be receiving it within the next couple weeks. Please take time to thoughtfully consider your participation in the Annual Fund and the election of your board members. Through your generosity, a long and bright future for NCC and the National Museum of Cambridge Glass can be assured. I want to thank you for your past generosity, and I sincerely hope you will continue your relationship with the National Cambridge Collectors.

Finally, I want to thank Sharon Miller for serving as a board member of NCC for the past 12 years. Sharon has decided not to run for a fourth term as board member, but plans to continue serving NCC in other capacities. Sharon's involvement over the past 12 years includes being Secretary of the Board, Chairperson of Grants & Fundraising, and Chairperson of Annual Convention. Although Sharon's commitment as a member of the Board of Directors officially ends in June, she plans to continue promoting the National Museum of Cambridge Glass at the Heartland Travel Show, to serve as the Chairperson of the Standards Committee, assist with NCC's participation in the annual Christmas parade, lead bus tours at the museum during the busy Christmas season, and continue as an active member of the Cambridge Cordials study group. Thank you, Sharon, for your past and continuing dedication to NCC and for helping us become the premier glass collecting club in the country.

*David*

David Ray  
[westervillesh@hotmail.com](mailto:westervillesh@hotmail.com)

# ***“UNDER THE SEA”***

**National Cambridge Collectors, Inc.  
38<sup>th</sup> Annual Convention**

**Wednesday, June 22<sup>nd</sup> through Sunday, June 26<sup>th</sup>, 2011**

## *Advance Registration Form*

*Please complete the Registration Form and return it no later than June 1, 2011. (Registrations post-marked after June 1, 2011 will incur a late fee. See below for cancellation policy.) Send your check payable to National Cambridge Collectors, Inc. along with this completed registration form to:*

**National Cambridge Collectors, Inc.  
Convention Registration  
P. O. Box 416  
Cambridge, Ohio 43725-0416**

*Do not enclose this registration with your election ballot. Ballots are opened during convention so your registration will not be processed before the convention starts. That means we do not know you are coming until you arrive.*

*Each person registering for the convention must pay the \$25.00 registration fee regardless of which events will be attended. The registration fee includes admission to the NCC Glass Show and Sale, all other scheduled events and a convention packet. Please register for all events you plan to attend, including those offered at no charge. For children under ten years of age, there is no registration fee; however, they will not receive a convention packet and must pay for any meals they attend.*

*Show dealers and President Circle members – there will be no registration fee; however, there will be a limit of two free registrations per Show Dealer.*

*Please list each person registering separately. Names should be given as you wish them to appear on your name badge. Please provide your NCC, Inc. membership number on the registration form. If registering for more than four persons, please list additional members on a separate sheet.*

*If you would like to receive an email confirmation receipt of this registration form, please list your email address and/or a telephone contact number. **This is the only way we can provide confirmation of your registration.***

### **Cancellation Policy**

*Written Cancellation up to 30 days before first convention event – full refund.*

*Written Cancellation up to 15 day before first convention event – full refund less \$10 handling fee.*

*Written Cancellation up to 5 days before first convention event – refund meals only.*

*Written Cancellation less than 5 days before first convention event – no refund.*

**“UNDER THE SEA”**  
**National Cambridge Collectors, Inc.**  
**Advance Registration Form**  
**June 1, 2011 - Registration Deadline**

<b>Name of Conventioneers</b> <i>(Please print legibly as you wish it to appear on your Name Badge)</i>	<b>Membership Number</b>	<b>First Convention</b>	
_____	_____	Yes	No
_____	_____	Yes	No
_____	_____	Yes	No
_____	_____	Yes	No

City / State \_\_\_\_\_

Email address \_\_\_\_\_ Phone Number (\_\_\_\_) \_\_\_\_\_  
*(Registration confirmation will be sent via email or by telephone call when the above information is provided)*

<b>ACTIVITY</b>	<b>FEE</b>	<b>NUMBER ATTENDING</b>	<b>TOTAL</b>
Registration (postmarked by June 1)	\$25.00	_____	\$ _____
Late Registration (postmarked after June 1)	\$30.00	_____	\$ _____
Dealer or President's Circle	\$0.00	_____	\$ _____
<b>Second Dog Watch Picnic at NCC Museum</b> <i>¼ BBQ Chicken, ½ Slab BBQ Ribs, Baked Beans, Potato Salad, Coleslaw, Roll, and Dessert*</i>	\$18.00	_____	\$ _____
<b>Neptune's Cocktail Reception and Captain's Feast at Pritchard Laughlin Galleria</b> <i>Appetizers provided during Cocktail Reception Beef Tenderloin, Cheese/Spinach Stuffed Chicken Breast, Twice Baked Potato, Mixed Greens with Raspberry Vinaigrette, Fresh vegetable medley, Variety of Desserts*</i>	\$30.00	_____	\$ _____
<b>Salty Dog Cocktail Reception and Seashore Supper at Pritchard Laughlin Galleria</b> <i>Appetizers provided during Cocktail Reception Chicken Alfredo, Eggplant Lasagna, Meat Lasagna, Caesar Salad, Breadsticks, Banana's Foster, and Ice Cream*.</i>	\$18.00	_____	\$ _____
Optional Donation to NCC for _____ <i>(i.e. museum acquisition, endowment fund, etc.)</i>		Total	\$ _____

**For Information and Planning Purposes Only.**  
**Please indicate how many persons will attend the following event:**

**First Time Orientation and Coffee With Cambridge** \_\_\_\_\_

**Major Field(s) of Collecting** \_\_\_\_\_  
*(This information will appear in the Convention Packet.)*

**\* Meals include iced tea, coffee, taxes and gratuity. Cocktails are available for an additional charge.**

# “UNDER THE SEA”

## PROPOSED Maritime schedule

### WEDNESDAY, JUNE 22, 2011

2:00 PM	Registration Opens	National Museum of Cambridge Glass
6:00 PM	Second Dog Watch Picnic	National Museum of Cambridge Glass

### THURSDAY, JUNE 23, 2011

9:00 AM	Convention Registration Opens “Coffee with Cambridge”	National Museum of Cambridge Glass
10:00 AM	First Time Conventioneers & Mentors and Friends Programs Visit the Display Rooms at the Museum and interact with collectors who have assembled the displays for 2011.	
11:00 AM	<b>Program - Cambridge 101: Learn the Basics to Cambridge Glass Identification</b>	
12:00 PM	TREASURE CHEST SEARCH: Set sail to one of the many local glass dealers on the “treasure chest card” or enjoy some free time shopping or visiting local attractions. (More information is forthcoming on the Treasure Chest Search.	
4:00 PM	Museum and Registration Closes	
6:00 PM	<b>Program - “Sea Shell Line”</b>	Pritchard Laughlin Civic Center

### FRIDAY, JUNE 24, 2011

8:00 AM	Registration Opens Pick up numbers for Glass Show Entry	Pritchard Laughlin, Galleria
10:00 AM	Drop off “Under the Sea” Themed Displays and begin Pirate’s Treasure Raffle	
12:55 PM	Announcement of Pirate’s Treasure Raffle Winner	
1:00 PM	Opening of the Show and Sale	Pritchard Laughlin Exhibit Hall
5:00 PM	Closing of Show and Sale	
5:30 PM	Neptune’s Cocktail Reception	Pritchard Laughlin Galleria
6:00 PM	Captain’s Feast Recognition of Volunteers & Awards Presentations Treasures from the Sea Auction	Pritchard Laughlin Galleria
8:00 PM	Bring your “Bounty and Brag” & Glass Identification	Pritchard Laughlin Civic Center

### SATURDAY, JUNE 25, 2011

7:00 AM	Glass Dash, Early Bird Admission	St. Benedict’s Gymnasium
8:30 AM	Glass Dash, General Admission	St. Benedict’s Gymnasium
11:00 AM	Close of Glass Dash	
11:00 AM	Opening of Show and Sale Mermaid’s Madness Silent Auction	Pritchard Laughlin Exhibit Hall
12:30 PM	Program - Lunch and Learn “TBD”	Pritchard Laughlin Civic Center
4:00 PM	Closing of Show and Sale End of Mermaid Madness Silent Auction	
6:30 PM	Salty Dog Cocktail Reception	Pritchard Laughlin Galleria
7:30 PM	Sea Shore Supper Announcement of Mermaid Madness Silent Auction & Treasure Chest Winners	Pritchard Laughlin Galleria
8:00 PM	Annual Crew Meeting	Pritchard Laughlin Galleria

### SUNDAY, JUNE 26

8:30 AM	NCC Board of Directors Meeting	National Museum of Cambridge Glass
1:00 PM	Cambridge Glass Worker Reunion	National Museum of Cambridge Glass

# Annual Fund 2011

## By Ken Filippini

Recently, I have been collating the Annual Fund mailing envelopes, putting into each one the various items that constitute what I believe is the most important correspondence, we as an organization have with each other. These envelopes contain two separate, but related instruments that inevitably directly affect the destiny of NCC. The first part of the package is made up of a bio sheet, ballots, and a ballot envelope. The bio sheet is a vehicle by which each candidate has a chance to remind the membership of their qualifications for a seat on the Board of Directors. Please read them carefully. The 2011 Official Ballot will list the candidates and each voting member can choose a maximum of three (3), by putting a check mark next to the name. Place the ballots in the ballot envelope, seal the ballot envelope, and put that envelope into the return envelope and part one of the packets is complete. Keeping in mind that our selections will have a real effect on the future direction of the organization. Voting is significant, we appreciate your involvement.

The second part of the package contains an important letter to the Friends of Cambridge from our President, David Ray, and the Annual Fund Response Form. Before you pick up your response form, please read David's letter and carefully consider the vital Information it imparts. Now to the response form itself.

***You will notice that member's names are listed on the left side. However, it has come to the Board's attention that perhaps there are members of households that are not currently listed. So let me state the rule: Each member of a household, eighteen years or older can be considered a legitimate member of the organization, each having equal rights, which includes the right to vote. If you wish to update your household's status, please add their names to the Annual Fund Response Form, and we will add them to NCC's membership list.***

That brings us to the right side of the response form, where each of us has to decide at what level we feel comfortable supporting our NCC. I can sincerely say that NCC unquestionably needs our support in order to fulfill its ultimate goals, which must include the ability to survive long into the future. Over the past few years the Friends of Cambridge have been extremely generous and we should be proud of all we have accomplished, but there is still more to do. In order to make all of our accomplishment and sacrifices a true success we must climb one more mountain. The climb to endow the future is our ultimate goal, and we can only reach that height, together. In advance, let me thank you for your continued support, and your willingness to advance NCC's mission.

### 2011 Candidates for NCC Board of Directors



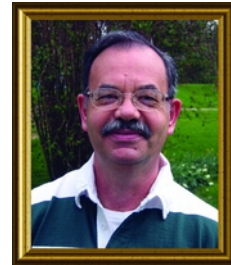
Larry Everett



Nancy Finley




Les Hansen



Lynn Welker

***Watch your mail for the  
2011 Annual Fund Response Form  
and Official Ballot  
for NCC Board of Directors***



Official Ballot  
2011

Example Only - Do not use

Candidates for Board of Directors

\_\_\_\_\_ Larry Everett

\_\_\_\_\_ Nancy Finley


\_\_\_\_\_ Les Hansen

\_\_\_\_\_ Lynn Welker

Select three (3)

Ballots must be received by June 20, 2011.  
Results announced at Annual meeting.

**National Cambridge Collectors**  
P.O. Box 416  
Cambridge, OH 43725  
www.cambridgeglass.org  
nccglass@verizon.net



Membership Number \_\_\_\_\_

Member Name \_\_\_\_\_

email \_\_\_\_\_

Example Only - Do not use

\_\_\_\_\_ \$ 35 Patron

Benefactors:

\_\_\_\_\_ \$ 100 Century

\_\_\_\_\_ \$ 200 Mardi Gras

\_\_\_\_\_ \$ 500 Japonica

President's Circle

\_\_\_\_\_ \$ 1,000

Amounts contributed to the National Cambridge Collectors are tax-deductible. Please make your check payable to the National Cambridge Collectors, and return, with this reply form.

# NCC 2011 Auction

By Vicki Wollenhaupt

Pivotal moments in the Cambridge club seem to happen when rain is involved. The club's "auction weekend" had forecasts of rain and boy it did arrive.

Set up day of the auction started at 9 a.m. The glass was loaded and transported to the auction site at the Pritchard Laughlin Center. All of the auction items along with the set up equipment just managed to make it into the building before the heavy rain started.

The auction committee and a group of volunteers erected risers, draped material and unwrapped glass. Lynn Welker orchestrated the placement of the items. After all the glass was in place each item must have its assigned lot number placed on it. This process looks like rush hour on the busiest freeway you can imagine. Pairs of volunteers take sheets of the lot numbers and fly around the display looking for the next item on their list to put a lot number on. This whole process was accomplished in three hours and probably set a record for set up time.

Friday evening's quarterly meeting was the official start of the auction event. The meeting is held at the auction site because our program consists of a guided tour of the unusual and rare items that are being sold at the auction. This is presented by Lynn Welker and is always fun and interesting.

Outstanding items were represented from the Near Cut era through the 1950's production. This year's auction had the distinction of being one of the most well represented of the various time periods. Everyone left the meeting with keen anticipation of the next day auction. Even the rain couldn't dampen our spirits.

Saturday morning arrives and it is still raining. The weather did not deter the arrival of auction bidders, as a small crowd awaits the opening of the auction room with more arriving all the time. The hour before the auction starts is the preview and people are three deep waiting to inspect the item that they are interested in bidding on. This was without a doubt the largest turnout for an NCC auction. It has to be the result of several factors, the first being the amount of premium items and second, the ability to view a photo of all the lots offered on the club's website. Reading a description of the item is never as exciting as actually being able to see it.

At 10 a.m. Craig Connelly, our auctioneer of long standing, starts the auction. The pace of the auction starts early, with lot number five, the pair of #1141 Lady Leg book ends which brings in \$525. These are hard to find and the bidders must have realized that fact.

Near Cut pieces made a strong statement at this auction: the #2966, Light Emerald, floral panels perfume atomizer realized a final bid of \$300. A beautiful #2671, 12 inch high vase brought a final price of \$175. The #112, Mulberry 7 inch plate realized a price of \$255. Opaque's had a wide range in prices, with an Azurite 8 inch bowl with black enamel trim only bringing \$10, but an outstanding Azurite 10 inch vase with deco sterling silver décor finished at \$310. The Ivory console set with the enamel hanging basket and floral gold trim realized the highest price of the opaque offerings, ending at the final bid of \$1,150. A Primrose mayonnaise and ladle with gold trim brought a very reasonable price of \$55.

One thing missing at this auction was Rubina. Not a single piece of Rubina was consigned to this year's auction. Etchings were also well represented with a rare #7801 Crème de Menthe with Portia etching selling for the very reasonable price of \$55, a Crystal Chantilly French Dressing bottle with a sterling stopper and foot sold for \$120. A Rose Point Pristine Candy box and cover sold for \$75. The #215 crystal Martha etched Chantilly 5-part relish sold for \$90.

Nudes were represented by rare shapes and wonderful color combinations. The nude stem cocktails that were in the extremely hard to find V shape had fierce bidding on both the Forest Green and the Amethyst and each realized \$525. The Crown Tuscan nude cocktail with the Topaz bowl sold for \$800 and the Crown Tuscan nude cocktail with the Royal Blue bowl followed at the price of \$750. Swans were also well represented. The top swan price and the top price of the entire auction was taken by the Swan punch bowl, stand and 12 swan punch cups at a record price of \$1,725.

A number of unusual ice buckets were in evidence this year and a dedicated ice bucket collector went home with a few. There were two ice buckets that I found very interesting, a 3400 light Emerald etched Diane. I cannot remember ever seeing this combo on an ice bucket, it sold for \$575. The other ice bucket was a crystal #1705 etched Portia, this bucket is the shape of the Tally Ho bucket but without the lines on the bottom. A small detail that makes a large difference, it sold for \$255. The price range on the ice buckets in the sale ranged from \$50 to the high of \$575.

Caprice collectors were offered a variety of unusual items that are hard to find. A #66 crystal Banana bowl sold for \$70; crystal ¼ lb. covered butter realized \$105. A rare #1 Amethyst 10 oz goblet brought \$225. Not one but two Doulton Caprice jugs were sold, the crystal brought \$255, and the Moonlight with a crack in the handle realized \$250. The highest realized price in Caprice went to the #1338 Carmen 3 lite candlesticks which sold for \$1,300.

Flower frogs started with a 9 inch crystal Heron that sold for \$55. If you attended the auction you would have thought that the Moonlight frogs were easy to find, which they aren't. The # 518 Moonlight, 8 ½ inch Draped Lady sold for \$225. The Moonlight Two Kid Flower frog sold for \$700. The # 1115 Willow Blue 11 inch Bashful Charlotte brought \$600 and a # 508 Pink 9 inch Mandolin Lady Frog sold for \$340.

For those of you that collect cuttings there was a lovely cut Adonis #1337 Cigarette holder that sold at the beginning of the auction for the price of \$35. A two light #502 Pristine six inch 2 lite Candelabra with cut Belfast on the foot sold for \$65. Cut Killarney Cocktail icers sold for \$85 each. The # 3778, 7oz. tall sherbets cut with the early Ambassador (Lovebirds) sold for \$80 each.

Specialty auctions manage to have some consignments that are big "LOOK AT ME" items. The enameled Ivory console set garnered a lot of attention. The Bluebell Rabbit box and cover was a rare item and it sold for \$1,000. The 3400/38 crystal satin 80 oz. Ball Jug with the Rockwell Sterling Silver Overlay Geese was beautiful, it brought \$1,150. The Carmen #3400/156, 12 oz. decanter with the Gold

# NCC 2011 Auction continued

Encrusted Bordeaux etching might have been diminutive in size but realized the price of \$1,550. We also had two pieces of Mardi Gras in the auction. The 6 inch vase realized \$950 and a 5 ¼ inch cylinder vase, with inner bubble chips, brought \$325.

Along with the auction items, the NCC museum had a small table featuring the jewelry made from Cambridge Glass. Carl Beynon manned this for the museum. Carl said that he was doing a brisk business. With that said, if you ever break a piece of Cambridge Glass, don't throw it away, bring it to Carl and let him work his magic.



In the large auction crowd, three generations of Wilt's from Hillard, Ohio were present. Austin Wilt, age 12, was a first time auction attendee and like his grandfather, John Wilt, was adding to his Cambridge Collection. Austin bought several items and was paying for them with his own money. I imagine that every one of us wishes that we would have started collecting at that age.



This auction set a record for N.C.C. The final total for the auction is well over \$50,000. This milestone is a great achievement not only for our club but also for Cambridge Glass. A lot of hard work goes into this endeavor and as a long time club member I know that many behind the scenes people deserve thanks.

First of all, the auction committee deserves a large show of appreciation for their hard work and the long hours that they devoted to making this our most successful auction in our club history.

A thank you to David Rankin for photographing the consignments so that all of the members had the opportunity to actually see the items.



Thanks to our auctioneer, Craig Connelly and his staff, who make our auction a fun event.

Thank you to all the club members who took

turns holding up the glass and running items to the buyers.

A huge THANKS to all of the consigners. The items for this auction were wonderful and they made it possible for this outstanding result.

If you were not there you missed a great time, good glass and lots of smiling faces. Yes, it was still raining when the auction was finished!

Let's make this the best year yet for N.C.C. , come to the convention and share in all the fun time, oh yes, be sure to pack your raincoat!



## Special Museum Visitors

On February 20, members of the McManus family toured the museum. Their grandfather was Walter McManus, who helped his father Hugh McManus make the first piece of Cambridge Glass in May, 1902. They brought several of the American Flint Glass Worker's Union badges that Walter had received at conventions throughout his career in glassmaking. They are now on loan and are featured in the Big X pitcher showcase in the museum auditorium. Shown left to right are: Jo Ellen McManus Boyd, Mary Ann McManus, Evelyn McManus and Roger McManus.

## In Memoriam

### Mary Elizabeth Misel

NCC member #4333 Mary Elizabeth Misel passed away on March 2, 2011 at the age of 89. Born August 28, 1921, in Cambridge, Ohio, he was one of ten children (seven brothers and two sisters). Mrs. Misel was a secretary for the Wyckoff Public Schools in Wyckoff, New Jersey until her retirement in 1985.

She is survived by three daughters (NCC members Linda Adkins, Nancy Misel and Janet Colyer), four grandchildren and five great grandchildren. We extend our condolences to the whole family.



*Many thanks to the Friends of Cambridge who helped during the Auction.  
Some of the moments are captured below.*

Unpacking and setting up the auction



Auction preview



The Auction



# Museum Ready for 2011 Opening

By Cindy Arent

Special thanks to our members who have graciously loaned their collections for one of the three 2011 feature rooms. On February 19<sup>th</sup>, Alex Citron and Shelley Cole traveled to Cambridge with their collection of Cambridge Glass with the keyhole design. Alex and Shelley worked on placing their beautiful pieces in the Museum replica of the Cambridge Glass Company Sample Room. This display will definitely be an advantage when we explain easy ways to identify Cambridge Glass to museum visitors.

Ralph and Linda Warne have loaned their fabulous collection of Cambridge ice buckets this season for the Member's Display Room. They have 174 ice pails on display! This room will enable us to educate visitors about the massive line of elegant glassware produced by the Cambridge Glass Company.

The 2011 Dining Room is set with items from the Sea Shell line decorated with the Rockwell Silver Seahorse decoration to coincide with the convention theme, Under the Sea. The stemware is engraved with the early Ambassador design. Color photos of these displays are featured in this issue of the Crystal Ball and in the museum section of [www.cambridgeglass.org](http://www.cambridgeglass.org) under the slide shows that archive the feature rooms from each year since the new museum opened in 2002. If you have the chance, it is worth viewing each year to see how the museum has evolved. Thank you to our webmaster David Adams for his work on this project.

During February we were also on the road promoting. On the 17<sup>th</sup> we participated in the Community Resource Day sponsored by the Cambridge Area Chamber of Commerce. Eighty area non-profits and service organizations were involved to educate the community about what they offer.

On February 10, eight museum volunteers purchased a NCC corporate table at the Chamber's Annual Dinner. The event was held at the Deerassic Park Education Center with over 200 in attendance. Jo Sexton, President of the Chamber of Commerce, is also a new member of the National Cambridge Collectors, Inc. Welcome Jo!

During the Chamber of Commerce Home, Garden & Business Expo, March 11-13, the Cambridge Cordials Study Group will be donating a cake for the Dickens Victorian Village Cake Auction at the Pritchard Laughlin Civic Center. The cake will include a beautiful Cambridge Glass pedestal cake stand as the incentive for those bidding on the cake. Hopefully the winning bidder will become a collector of Cambridge Glass and join our organization. There will be a radio remote during the auction and we will be manning the phones taking bids. This is a good opportunity to promote the museum and our organization to the large number of people attending the Home, Garden & Business Expo in addition to those listening on the radio.

The museum will open for the season on April 1<sup>st</sup>. The hours are

Wednesday through Saturday; 9am to 4pm and Sunday from noon to 4pm. We are closed Easter and the Fourth of July. We look forward to your visit this season!



Museum volunteers enjoyed representing our organization at the Cambridge Area Chamber of Commerce Annual Dinner. Looking out of the windows are: (L-R) Carl Beynon, Joe Miller, Jeff Ross and Gary Wiseman. Seated and standing are: Cindy Arent, Sandi Rohrbough, Betty Sivard and Sharon Miller.



Carl Beynon and Sally Slattery worked the booth promoting the museum and NCC at the Community Resource Day at the Cambridge City Park Armory. The event was organized by The Chamber Women's Alliance.

# Featured Displays for 2011

## Members Display Room



Ralph and Linda Warne finished their display of Cambridge ice buckets in the Member's Display Room during auction weekend.



## Sample Room



Shelley Cole and Alex Citron are shown with their 2011 display in the Museum Sample Room. It features their collection of glassware with the keyhole design.



# Featured Displays for 2011

Dining Room



# National Cambridge Collectors, Inc.

## March 2011 Quarterly Meeting

President David Ray called the March 2011 Quarterly Meeting of the National Cambridge Collectors, Inc. to order on Friday March 4, 2011 at 7:30 pm. The meeting was held at the Prichard Laughlin Civic Center, Cambridge, OH, with approximately 100 members in attendance.

Larry Everett moved (second Jeannie Moore) to waive the reading of the November 2010 Quarterly Minutes. After hearing no requests for corrections, the minutes of the November 2010 Quarterly Meeting, as printed in the January 2011 issue of the Crystal Ball, were approved.

**Treasurer's Report** – Mike Strebler reported the Board has approved the 2010 Annual Report, and will be posted on the website. Briefly, NCC started the year with \$140K in financial assets, and ended the year with \$177K. The Board approved transferring \$50K to the endowment fund as of 12/31/2010, resulting in a balance of approximately \$150K. The budget for 2011 has been approved, and has a forecast of ending the year with \$197K compared with \$177K from last year. The 2011 budget will also be posted on the website. Everyone's support of the annual fund is appreciated.

### Committee reports:

**Acquisitions** – Lynn Welker reported the acquisition committee received some nice donations this past year, and some were for resale in the Museum. Additional donations are always welcome.

**Archivist** – Mark Nye reported that he has transcribed the financial ledgers from paper to electronic format. He does not have access to a Purchase / Accounts Payable Journal from the late 1930s / early 1940s. If anyone is aware of it, Mark would like to make arrangements to access the information.

**Auction** – Jack Thompson reported lists were received from 45 consignors. Jack expressed the thanks of the auction committee to 1) David Rankin for taking the photos of the auction items, 2) David Adams for getting them available on the website and 3) Mike Arent for providing physical space to receive all of the packages and 4) Frank Wollenhaupt, Cindy Arent and Sharon Miller for all their help with promotions. Jack also reported on the top three selling lots in the auction some 30 years ago, and urged everyone to participate in "wild and uncontrolled bidding" tomorrow.

**Convention** – Julie Buffenbarger and Nancy Finley are co-chairs. Nancy reported the theme is "Under the Sea", and will be asking for volunteers to do table centerpieces. Everything is coming together and they expect to have an outstanding convention.

**Glass Dash** – Larry Everett reported it will be held at St. Benedict's again this year.

**Museum** – Cindy Arent reported the Museum hosted over 2000 people from 60 busloads during November and December. All of the glass cases have been cleaned. The Guernsey County Convention and Visitor's Bureau will be making a video featuring the Museum. Sharon Miller coordinated activities at the recent Heartland Travel Show in Detroit. The feature displays have been changed for 2011: Ralph and Linda Warne have over 170 Cambridge ice buckets on display; Alex

Citron and Shelly Cole have filled the Sample Room with keyhole items; and the Dining Room is decked out with sea shell items.

**Program** – David Ray reported the November program topic will be Rosepoint. Further details will be available in June.

**Publications** – Mark Nye reported the Board has decided not to reprint value guides. As the current stock is sold, it will not be replenished.

**Publicity** – Frank Wollenhaupt reported NCC has gotten some good publicity recently in several trade publications. He is open to suggestions for other ideas.

### New Business:

**Nominating** – Rick Jones reported for the nominating committee. Larry Everett, Sharon Miller, and Lynn Welker are Board members with terms expiring this year. Sharon Miller has declined to re-run. The committee recommends this year's slate of candidates as: Larry Everett, Nancy Finley, Les Hansen and Lynn Welker. Rick Jones moved to accept the slate of candidates, second by Ken Filippini. Frank Wollenhaupt moved to close nominations, second by Jeannie Moore. The slate of candidates was accepted.

**Long Range Planning** – Rick Jones highlighted the work of the standards committee for museum accreditation, along with working on the policy book, as meeting the long term needs of the organization. The Board approved some proposed updates to the constitution and by-laws to bring them up-to-date with current practice.

- 1) Adjust the mission statement to fit our new definition as published in the Crystal Ball
- 2) Update the definition of voting member to conform to our annual fund protocol
- 3) Increase the number of vice-presidents to five as part of our new governance structure to group our committees into five major divisions: Member Services, Development, Education, Museum, and Administration.

The specific wording will be published in the June Crystal Ball to allow members time to review and be prepared to vote on the constitution changes at the Annual Meeting.

**Facebook** – If there are any members interested in helping NCC establish and maintaining a Facebook presence, contact any board member. We're open to new ideas to reach new members.

### Old Business:

David Ray reported the Board had the action from the November meeting to revisit the proposed solution to handling tie votes. The Board has reviewed possibilities, and submitted a recommendation which was published in the March Crystal Ball. This will be voted upon at the June meeting.

Upon hearing no further old or new business, Larry Everett moved to adjourn to allow for Show & Tell, followed by Lynn Welker presenting a preview of the auction (second by Steve Klemko). Passed.

Meeting adjourned at 8:05 pm  
Respectfully submitted, Freeman Moore



# 2011 Auction Results



1	n/a	55	175	109	95	163	325	217	650	271	65	325	360	379	90
2	10	56	1000	110	50	164	425	218	75	272	60	326	110	380	15
3	35	57	100	111	135	165	525	219	155	273	90	327	50	381	20
4	105	58	80	112	190	166	85	220	45	274	55	328	65	382	40
5	525	59	1725	113	35	167	100	221	250	275	24	329	110	383	20
6	36	60	30	114	70	168	210	222	65	276	150	330	40	384	20
7	15	61	140	115	55	169	185	223	65	277	105	331	40	385	75
8	24	62	200	116	255	170	400	224	105	278	30	332	15	386	30
9	45	63	250	117	30	171	225	225	135	279	135	333	40	387	25
10	160	64	175	118	50	172	75	226	30	280	25	334	35	388	20
11	65	65	100	119	270	173	70	227	55	281	425	335	80	389	30
12	325	66	75	120	80	174	65	228	425	282	45	336	150	390	105
13	35	67	255	121	70	175	105	229	125	283	40	337	65	391	65
14	65	68	25	122	30	176	50	230	25	284	325	338	85	392	25
15	55	69	45	123	200	177	250	231	170	285	75	339	75	393	30
16	55	70	130	124	25	178	60	232	70	286	480	340	20	394	15
17	50	71	120	125	55	179	75	233	150	287	40	341	75	395	27.5
18	75	72	40	126	90	180	32	234	125	288	160	342	30	396	5
19	90	73	105	127	600	181	65	235	75	289	65	343	325	397	55
20	55	74	280	128	400	182	225	236	30	290	55	344	135	398	25
21	25	75	30	129	80	183	55	237	400	291	110	345	50	399	30
22	50	76	80	130	55	184	5	238	200	292	30	346	45	400	35
23	310	77	55	131	225	185	45	239	165	293	250	347	85	401	30
24	70	78	65	132	55	186	1300	240	65	294	35	348	30	402	40
25	300	79	60	133	50	187	75	241	155	295	55	349	35	403	85
26	225	80	1150	134	225	188	50	242	400	296	95	350	25	404	65
27	195	81	55	135	125	189	85	243	1000	297	90	351	85	405	35
28	110	82	35	136	85	190	45	244	75	298	80	352	10	406	45
29	35	83	110	137	60	191	35	245	100	299	35	353	100	407	35
30	525	84	250	138	145	192	125	246	50	300	35	354	160	408	30
31	130	85	10	139	75	193	340	247	250	301	95	355	30	409	30
32	90	86	375	140	90	194	50	248	370	302	85	356	25	410	45
33	50	87	105	141	40	195	85	249	130	303	225	357	55		
34	105	88	45	142	275	196	20	250	50	304	115	358	60		
35	350	89	90	143	120	197	55	251	65	305	30	359	135		
36	25	90	60	144	100	198	300	252	55	306	20	360	105		
37	70	91	700	145	750	199	40	253	42.5	307	65	361	35		
38	950	92	75	146	65	200	105	254	45	308	145	362	65		
39	70	93	60	147	45	201	55	255	55	309	155	363	35		
40	35	94	35	148	85	202	100	256	175	310	125	364	15		
41	1150	95	210	149	85	203	125	257	200	311	50	365	45		
42	250	96	80	150	300	204	35	258	60	312	10	366	140		
43	150	97	200	151	115	205	95	259	300	313	60	367	15		
44	55	98	45	152	20	206	65	260	85	314	300	368	90		
45	300	99	65	153	60	207	450	261	120	315	220	369	225		
46	65	100	65	154	25	208	175	262	70	316	45	370	40		
47	25	101	65	155	1550	209	45	263	60	317	37.5	371	200		
48	50	102	155	156	15	210	50	264	110	318	75	372	45		
49	200	103	45	157	25	211	85	265	30	319	60	373	125		
50	55	104	50	158	200	212	55	266	21	320	45	374	55		
51	800	105	125	159	150	213	400	267	45	321	55	375	65		
52	135	106	525	160	575	214	175	268	140	322	160	376	45		
53	325	107	50	161	125	215	80	269	50	323	30	377	20		
54	40	108	350	162	35	216	75	270	30	324	50	378	35		



# Traveling to Houston

by David Ray

The Houston Glass Show, organized by Max Miller, is held approximately 30 miles southwest of Houston in the town of Rosenberg. After landing at George Bush Intercontinental Airport, I had just enough time to stop at the hotel for a quick rest before heading to the glass show. The Houston Glass Show has a special opening on Friday evening from 6:00 pm until 9:00 pm. I left the hotel early thinking, 'I did not travel nearly 1,500 miles to be second in line.' In past years, more than 1,000 people have attended this show, so I expected the line to form early. I arrived approximately 45 minutes before the show's opening and was the first in line. Within 5-10 minutes, more fellow glass collectors began arriving and many conversations were struck.

The first familiar faces were those of Bob and Margaret Downing. They too had arrived early anticipating a large crowd. As the opening of the show approached, the crowd started to form without any kind of organization. At 6:00 pm the doors opened and the crowd swarmed the booths nearest the door. While standing in line a couple of pieces in the nearest booth caught my interest, so I dashed to check them out. After shopping for two hours, I had selected four items that needed to return to Ohio. One of the difficulties of traveling by airplane is packing your purchases for the return trip. Fortunately, multiple dealers offered to drive my glass back to Ohio, so that problem was resolved. I want to thank Jim and Leora Leasure, Sandra Bridwell-Walker, and Kim Carlisle for offering to return my purchases to Ohio. I am greatly looking forward to retrieving my purchases at the Three Rivers Depression Glass show in March.

Twenty-three dealers set up at this year's Houston Glass Show. Long-time NCC Convention Glass Show dealers Sandra Bridwell-Walker, Jim and Leora Leasure, and Ken and Char Fahs were set up. In addition, Max Miller, Don Rogers, and Jim and Rose Curnutt, dealers who have set up at Convention in years past, were also displaying high-quality items for sale. We look forward to their return in the near future. Every dealer had a display of Cambridge Glass, so each booth required careful inspection. It took multiple trips through the show to see everything. Some of the exciting Cambridge items that appeared on the floor were: pink flip vase with satin interior GE Hunt Scene, 13" Ivory Draped Lady, large Willow Blue Everglades tulip vase, 3400 Forest Green covered candy etched Diane, Ebony Pillow Vase etched Gloria (white gold encrusted), 3500 large covered urn etched Elaine, 2 Inverted Feather water goblets, crystal Caprice decanter with stopper, Moonlight Caprice mustard and marmalade, ebony cylinder vase GE Classic, small hat etched Rose Point, Gold Krystol and Amber turkeys, and 2 Royal Blue 3104 hocks with silver decoration. Yes.....a few of these items will be returning to Ohio! The quality of the glass at this show was excellent and I highly recommend that you try to attend.

After three hours of shopping, Jeannie and Freeman Moore and I went for dinner. While having dinner, NCC members Brady Boudreaux and Norman Woodson stopped at the table to introduce themselves. In a Crystal Ball article written in February 2008, Norman described his good fortune in finding a Carmen Japonica comport in a local antique shop while his mother waited patiently

in the car. It was great to meet these NCC members in person. Hopefully they will have the opportunity to visit Cambridge, OH in the near future.

My trip to the Houston Glass Show was a blast and I hope to return. In March I plan to attend the Three River Depression Glass Show in Pittsburgh and the 20-30-40's Glass Show in Chicago.



l-r: David Ray, Max Miller and Jeannie & Freeman Moore



Rose & Jim Curnutt



Char & Ken Fahs



by Larry Everett

This report is provided to keep members up with what's happening on the world's largest Internet Auction site. It is not meant as an educational tool, nor as a pricing guide, and we cannot guarantee the accuracy of listings herein.

Greetings from eBay land! Please forward interesting news to me at: [heartlamps@sbcglobal.net](mailto:heartlamps@sbcglobal.net).

### Rose Point

It was great to see so many of you at the NCC auction. We hope you have all your auction treasures unpacked and within admiration view. Leading off the lineup this month is a Pristine 98 - Cocktail Shaker with #9 Chrome Plated Top. Mark it as a bargain for only \$70.52! Next we find a 3500/152 - 11" 2-handle 4-compartment Celery and Relish that sold on Feb 15<sup>th</sup> for \$33.99. A cute 3900/100 - 6 oz. Oil, with Ground Stopper ended on the same day for \$45.99. A hard to find 1066 ivy vase found a new home on Feb 19<sup>th</sup> for \$382.50. On Feb 20<sup>th</sup> a 3400/141 - 80 oz. jug (not optic) sold for \$225.

### Statuesque

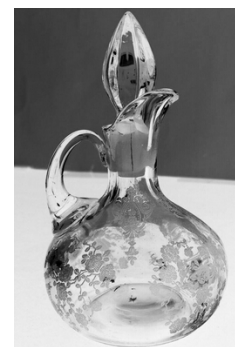
On Feb 16<sup>th</sup> a 3011 - Ash Tray with a Lt. Emerald top ended at \$208.49. A 3011/13 - 1 oz. Brandy with an Amber top brought \$52. On Feb 27<sup>th</sup> a 3011 - 7" Flared Comport with Diane etching managed a mere \$151.38. Who would have thought you could find an etched nude for under \$200?

### Other Etchings

I don't remember ever seeing GE Minerva before, but on Feb 21<sup>st</sup> a 3500/67 - 12" Tray, GE Minerva was sold for \$47. A magnificent No. 279 - 13" Footed Vase with Ebony foot E742 for only \$113.50. It would be just the thing for your spring bouquets! On Feb 20<sup>th</sup> a pair of #3779 - 9 oz tall goblets ended at a mere \$9.99 for the pair. These were listed as Chantilly, but the sharp eyed members of the Daffodil Mafia knew better. Could you use another 3400/38 ball jug? One sold on Feb 22<sup>nd</sup> with Valencia etching for \$67.88. On Feb 20<sup>th</sup> a set of four pink 3077 GE Imperial Hunt Scene 2 1/2 oz wines sold for \$158.05. On Mar 2<sup>nd</sup> a No. 17 - 26 oz. Lt Emerald Decanter etched Imperial Hunt Scene managed \$358.33. On Feb 20<sup>th</sup> a Crown Tuscan pillow vase GE Diane sold for \$396.99. and to round out the category for the month was a stunning and rare Forest Green 11" Covered Urn with Apple Blossom etching! This beauty sold for \$859.

### Miscellaneous

A pair of Carmen 3500 6 1/2" - 2 1/2 oz. wines sold on Feb 20<sup>th</sup> for \$48. An 11" Ebony swan sold on Feb 19<sup>th</sup> for \$192.50. Continuing the Ebony Swan theme, a 8 1/2" Ebony Swan complete with the correct Cambridge Ebony Flower Block sold on Feb 13<sup>th</sup> for \$57.89. Feb 13<sup>th</sup> was a lucky day for someone. An Azurite top to a perfume lamp with black enamel Dragon etching sold for \$500. Happy hunting!





**IT'S TIME TO MAKE YOUR RESERVATIONS  
FOR THE 2011 NCC CONVENTION  
June 22<sup>nd</sup> - June 26<sup>th</sup>, 2011**

THE FOLLOWING IS A LISTING OF MOTELS AND RATES –  
ASK FOR THE CAMBRIDGE GLASS CONVENTION RATE

**Baymont Inn & Suites**      www.baymontinns.com  
61595 Southgate Parkway      740-439-1505 or 877-229-6668  
Cambridge, Ohio      \$79.95 + tax Standard Double or King

**Best Western Cambridge**      www.bestwesterncambridge.com  
1945 Southgate Parkway      740-439-3581 or 800-528-1234  
Cambridge, Ohio      \$64.99 +tax Special Rate up to 4  
persons

**Budget Inn**      www.bestwesterncambridge.com  
6405 Glenn Highway      740-432-2304  
Cambridge, Ohio      \$45.00

**Comfort Inn**      www.choicehotels.com  
2327 Southgate Parkway      740-435-3200 or 800-228-5150  
Cambridge, Ohio      \$75.00 + tax – Standard Dble or King  
\$99.00 + tax – Suites

**Cambridge Days Inn**      www.daysinn.com  
2328 Southgate Parkway      740-432-5691 or 800-432-5691  
Cambridge, Ohio      \$49.95 – Standard Double

**Deer Creek Express**      www.deercreekmotel.net  
2321 Southgate Parkway      740-432-6391 or 800-637-2917  
Cambridge, Ohio      Call for special convention rates

**Hampton Inn**      www.hamptoninn.com  
8775 Georgetown Road      740-439-0600 or 800-HAMPTON  
Cambridge, Ohio      \$95.00 +tax – Standard Double

**Southgate Hotel**      www.southgatehotel.net  
2248 Southgate Parkway      740-432-7313 or 800-272-6232  
Cambridge, Ohio      \$60.00 + tax Standard Dble or King

**Super 8**      www.super8.com  
8779 Georgetown Road      740-435-8080 or 800-800-8000  
Cambridge, Ohio      \$59.00 +tax – Standard Double

**Salt Fork State Park &  
Conference Center**      www.saltforkresort.com  
US 22 East,      740-439-2751 or 800-282-7275  
Cambridge, Ohio      Call for rates

**Colonel Taylor Inn**      www.coltaylorinnbb  
633 Upland Road      740-432-7802  
Cambridge, Ohio      Call for rates

**Charming Little B&B**      www.charminglittlebandb.com  
1511 Clairmont Avenue      740-630-6002  
Cambridge, Ohio      Call for rates

**Friendship House  
Bed & Breakfast**      740-826-7397  
62 West Main Street      Call for rates  
New Concord

For Camping and Cabin arrangements, please  
visit the Guernsey County website at  
[www.visitguernseycounty.m](http://www.visitguernseycounty.m) or call 800-933-5480.

**2011 SPRING SHOW AND SALE**  
Early American Thru Mid-20th Century  
Patterns, Elegant & Depression-Era Glassware,  
Kitchenware, China, Pottery & Linen Collectibles  
*Special Display: "Advertising On Glass & Pottery"*  
**NEW DATES!**      Saturday, April 30, 2011 10am-5pm  
Sunday, May 1, 2011 10am-5pm  
**BUVAL HIGH SCHOOL**  
Greenbelt Road at Good Luck Road, Landon, MD  
Capital Beltway (Outer Loop) Exit 21A Route 10E Greenbelt/NASA  
Capital Beltway (Inner Loop) Exit 19 Southworth Ave. - Right Lane  
To Route 202 East - Greenbelt/NASA (about 1 1/2 miles to Buval H.S.)  
\*\*\*Glass Identification - Beer Prices - Snacks - Books\*\*\*  
Info: 202-562-1261 / 410-262-1192, Email: [phobias@jps.com](mailto:phobias@jps.com) Admission: \$4.00  
The '76 Show Sponsored by Del-Mar-Ya Depression Glass Club

Heisey Collectors of America, Inc. proudly present

The 41st Annual  
**PREMIER GLASS SHOW**  
featuring prominent Elegant Glass Dealers from across the US

**Show Hours**  
Thursday, June 16 4 - 7 p.m. \$5 admission  
(ticket sales begin at 3 p.m.)  
Friday, June 17 Noon - 5 p.m. \$5 admission  
Saturday, June 18 Noon - 4 p.m. FREE admission  
Adena Hall OSUN/COTC Campus, Country Club Drive, Newark, OH  
30 miles east of Columbus, off State Rte.16

---

The 40th Annual  
**NATIONAL CONVENTION**  
"Happy 40th Birthday HCA"  
June 15 - 18, 2011  
Convention Events include:  
Welcome Barbecue\*  
Recognizing Former Heisey Employees, 1st Timers, Board Candidates & Conventioneers  
Banquet\*, Special Auction\*, HCA Annual Meeting,  
Study Club Meeting, Seminars, ID Session/Show & Tell\*  
Flea Market on the Square  
\*you must be registered to attend these events

---

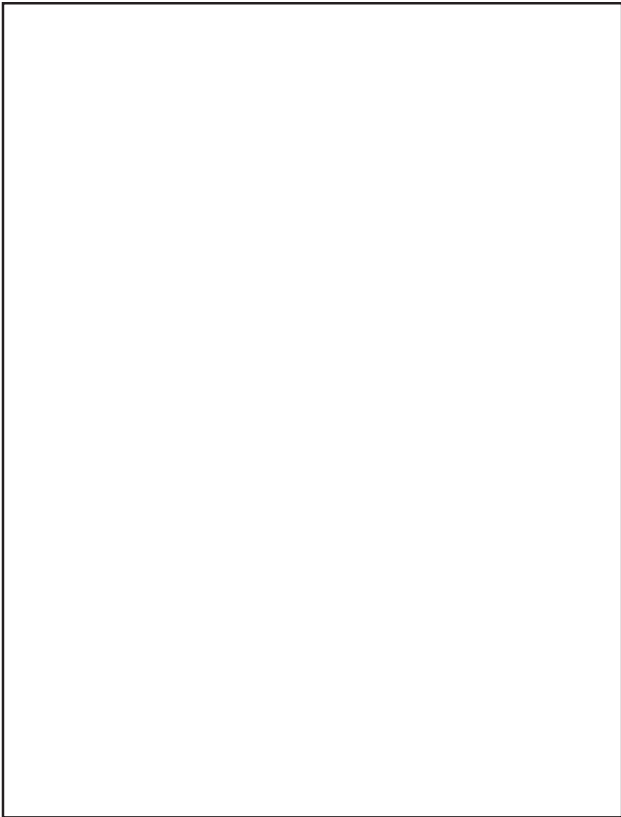
**MUSEUM OPEN HOUSE**  
June 14 - 18 10 a.m. - 4 p.m. • June 19 1 - 4 p.m.  
FREE Admission • Refreshments in lower level  
For more info: (740)345-2932 • [www.HeiseyMuseum.org](http://www.HeiseyMuseum.org)

---

Proceeds benefit the National Heisey Glass Museum

**WANTED**  
**Glass Dash Participants**

There are several spaces available for glass enthusiasts to set up at the 2011 Glass Dash which will be held Saturday morning, June 25, at St. Benedict's Gym (same location as last year). This is an exciting event held during the Convention. Dealers are welcome, but really this is a perfect venue for those who need or want to reduce their collections. As expected, Cambridge glass sells best, but other items are also sold during this event. Just make sure that the other glass items are clearly marked. If you are interested in joining the fun, please contact Larry or Susan Everett by email at [heartlamps@sbcglobal.net](mailto:heartlamps@sbcglobal.net) or give them a call at (937)675-6491.



# NCC Events

\*\*\*\*\*

**2011 Convention  
June 22-26, 2011**

## Glass Shows

**April 2-3, 2011**  
Lincoln Land DG & Pottery Show & Sale  
Springfield, Illinois  
Call: (217)546-4790  
Email: [margaret\\_davis37@sbcglobal.net](mailto:margaret_davis37@sbcglobal.net)  
More Info: [www.lincolmlandglassclub.com](http://www.lincolmlandglassclub.com)

**April 9, 2011**  
Nutmeg Depression Glass Club All Glass Show & Sale  
Southington, Connecticut  
Email: [lisabert@cox.net](mailto:lisabert@cox.net)  
Call: 860-643-5353

**April 16-17, 2011**  
Westchester Glass Club Collectors Show & Sale  
Greenwich Civic Center  
Old Greenwich, Connecticut  
Email: [douglass0128@aol.com](mailto:douglass0128@aol.com)

**April 30-May 1, 2011**  
Rocky Mountain Depression Glass Society  
Array of Color 36th Annual Show & Sale  
Douglas County Event Center  
Castle Rock, Colorado  
More Info: [www.rmdgs.com/](http://www.rmdgs.com/)  
Call: 303-722-5446

**April 30-May 1, 2011**  
Del-Mar-Va DG Show & Sale  
Lanham, MD  
Call: 301-565-2361/410-263-4192  
Email: [ybrian@juno.com](mailto:ybrian@juno.com)

**May 21-22, 2011**  
Great Lakes Depression Glass Club Show & Sale  
Madison Heights, Michigan  
More Info: [www.depressionglassclub.com/](http://www.depressionglassclub.com/)  
Call: 586-294-8290

**May 26-28, 2011**  
Portland's Rain of Glass  
19th Annual Glass Collectors Convention & Auction  
Portland, Oregon  
More Info: [www.rainofglass.com](http://www.rainofglass.com)

# DEALER DIRECTORY

**Glen & Carolyn Robinson**  
White Rose Antiques  
Specializing in Depression Era Glassware  
  
2454 McFarland Road  
York, SC 29745  
803-684-5685  
[gandcrobinson@aol.com](mailto:gandcrobinson@aol.com)  
[whiteroseglassware.com](http://whiteroseglassware.com)

**Joanne & Janine Bender**  
Specializing in Depression Era Glassware  
We Buy & Sell  
  
PO Box 1007  
Pebble Beach, CA 93953  
831-647-9957      [jjdbender@aol.com](mailto:jjdbender@aol.com)  
831-647-9949      [www.benderglass.com](http://www.benderglass.com)

**J & L Treasures**  
Specializing in Depression Glass  
Heisey, Cambridge, Fostoria, Morgantown,  
Tiffin, etc.  
  
Linda Kilburn  
PO Box 1257  
Burlington, CT 06013  
860-673-4088 (Answering machine - leave message)

**Ohio Valley Antique Mall**  
7285 Dixie Highway (Route 4)  
Fairfield, OH 45014  
Cincinnati's Largest Multi-Dealer Antique Mall  
Hours: DAILY 9:00 a.m. - 9:00 p.m.  
  
513-874-7855  
[www.ohiovalleyantiquemall.com](http://www.ohiovalleyantiquemall.com)  
[cfaxon@ohiovalleyantiques.com](mailto:cfaxon@ohiovalleyantiques.com)

# DEALER DIRECTORY

**Dealer Directory - \$24 for 12-months, size limited by box (see below). Includes listing on NCC website.**

## Advertising Rates:

1/8 page \$15    1/4 page \$20  
1/2 page \$30    Full page \$50  
(plus \$5 per photograph)

Electronic submissions should be emailed to:

[ncccrystalball@charter.net](mailto:ncccrystalball@charter.net).

Use Word. Mailed submissions and all payments should go to PO Box 416, Cambridge, OH 43725. Deadline is 10th of preceding month. Ads must be paid in advance. Show listings are FREE; send info to PO Box or e-mail address 60 days before event.

## Classified Ads - Reach over 1,000 avid collectors of Cambridge Glass

### VIRTUALATTIC AT THE GLASS CHALET

SPECIALIZING IN ELEGANT DEPRESSION ERA GLASS

Sandra L. Bridwell-Walker    PO Box 3448  
William P. Walker    Cleburne TX 76033-3448  
Phone: 817-202-0940    www.virtualattic.com  
Sandy's Cell: 817-559-0328    virtualattic@sbcglobal.net  
theglasschalet@sbcglobal.net  
Bill's Cell: 817-357-7084

### Daugherty's Antiques Jerry and Shirley Antiques & Collectibles-Mostly Glass

[www.daughertys-antiques.com](http://www.daughertys-antiques.com)  
email: sdaugh2515@daughertys-antiques.com

Shows & Mail Orders    2515 Cheshire North  
402-423-7426 (evenings)    Lincoln, NE 68512

### THE GLASS HOUSE ANTIQUE MALL Furniture, Pottery, Glass Antiques and Collectibles I-70 Exit 146, East on SR 40

8825 E. Pike    8825 E. Pike  
Norwich OH 43767    TEL 740-872-3799

### Milbra's Crystal    Buy & Sell

Replacement and Matching  
Milbra Long (817) 645-6066  
Emily Seate (817) 294-9837  
PO Box 784  
Cleburne TX 76033

*Specializing in  
Cambridge  
Fostoria, Heisey  
and others*

E-mail: longseat@sbcglobal.net  
[www.fostoriacrystal.com](http://www.fostoriacrystal.com)

### ISAACS ANTIQUES (740) 826-4015

See our booths in Penny Court Mall in Cambridge and at White Pillars Antique Mall (Route 40, one mile west of I-70 Norwich, OH • Exit #164)

### The American Bell Association International, Inc.

7210 Bellbrook Drive  
San Antonio, TX 78227-1002  
[www.americanbell.org](http://www.americanbell.org)



### MARGARET LANE ANTIQUES

2 E. Main St. New Concord, OH 43762  
Lynn Welker    (740) 826-7414

Cambridge Glass Matching Service  
Hours: Mon-Fri 10-12 AM, 1-5 PM  
or by appointment

### Our House Antiques



Linda and David Adams  
Las Vegas, NV  
1-800-357-7169

[www.OurHouseAntiques.com](http://www.OurHouseAntiques.com)  
email: David@OurHouseAntiques.com

### ALADDIN LAMP BOOKS

Kerosene Lamps 1884-1940  
New book 2007

Bill & Treva Courter  
brtknight@aol.com

3935 Kelley Rd.    Phone 270-488-2116  
Kevil, KY 42053    FAX 270-488-2119

### Max Miller

Elegant Glassware • Books • Fiesta  
...and more

THE MARKET PLACE

(713) 467-0450 - BUS 10910 OLD KATY RD.  
(713) 461-1708 - RES HOUSTON TX 77043  
MMXGLASS@aol.com

### Cheshire Cat Antiques

Specializing in elegant  
depression to mid-century era glass  
and vintage kitchen glass.

Francee Boches > 305-884-0335  
fboches@cheshirecatantiques.com

Pull up a Mouse!  
Shop 24 hrs a day at  
[cheshirecatantiques.com](http://cheshirecatantiques.com)



### BAKER FAMILY MUSEUM

805 CUMBERLAND ST.  
CALDWELL, OHIO 43724  
740-732-6410

[bakermuseumnellbaker@msn.com](mailto:bakermuseumnellbaker@msn.com)

Wed & Thurs 9-4; Fri - Sat 9-5

### CRYSTAL LADY

1817 Vinton St.    Omaha, NE 68108  
Bill, Joann and Marcie Hagerty  
Shop 402-341-0643    Home 402-391-6730

Specializing in Elegant Glass & Collectibles  
[www.crystalladyantiques.com](http://www.crystalladyantiques.com)



### Mother Drucker's Penny Drucker

Specializing in Elegant Glassware  
Shows & Mail Order

PO Box 18087    (775) 851-7539  
Reno, NV 89511    (888) MDRUCKER  
[www.motherdruckers.com](http://www.motherdruckers.com)

### CRYSTALLINE COLORS

Cambridge • Fostoria • Elegant Glass  
Penny Court Mall, Cambridge - 2 booths  
Riverfront Antique Mall  
New Philadelphia, OH (I-77, exit 81)  
Booth #'s 626 and 616

Lynne R. Franks 216-661-7382

### GLASS FROM THE PAST

Maureen Gillis



[www.glassfromthepast1.com](http://www.glassfromthepast1.com)  
email: glassfromthepast1@comcast.net

### Cherished Collectibles

Shopping 24 hours in our online store  
Glassware, Figurines, Collectors' Plates

[www.cherishedcollectibles.com](http://www.cherishedcollectibles.com)  
Elegant and Depression Era Glass

### TWEAK COLLECTIBLES

Specializing in Elegant Glass  
BUY & SELL  
WANTED: CAMBRIDGE TURKEYS  
417-742-3653  
[btummons@aol.com](mailto:btummons@aol.com)

National Cambridge Collectors, Inc.  
PO Box 416  
Cambridge OH 43725

website: [www.cambridgeglass.org](http://www.cambridgeglass.org)  
e-mail: [ncccrystalball@charter.net](mailto:ncccrystalball@charter.net)

## Friends of Cambridge – Annual Fund

NCC exists through member giving using an Annual Fund system to raise operating funds and to ensure the preservation of Cambridge glass for future enthusiasts. The Annual Fund uses a common member "renewal" date and NCC sends out Annual Fund materials to everyone once a year during March/April. There are no monthly reminders or monthly renewal dates. The Annual Fund is NCC's primary means of support and all Annual Fund gift recognition levels are per household and include membership for all adults within the household. Additionally, each household will receive a subscription to the Crystal Ball newsletter, unlimited admissions to the museum, and rights to vote in elections for the Board of Directors. Multiple households at the same address are welcomed. NCC is a 501C(3) organization and Annual Fund gifts are allowed as a tax deduction under Section 170 of the Internal Revenue Code.

### Levels of Membership

Patron	\$35
Benefactor - Century	\$100
Benefactor - Mardi Gras	\$200
Benefactor - Japonica	\$500
President's Circle	\$1,000

President's Circle includes Convention registration for two members in the household and one copy of any new NCC publications.

## ***National Museum of Cambridge Glass*** Open April thru October only

Located at 136 S. 9th Street in  
downtown Cambridge, Ohio

Wed-Sat 9 a.m. - 4 p.m.

Sunday Noon - 4 p.m.

General Admission \$4

Seniors & AAA members \$3

NCC Members and children under 12

**FREE**

